

# Using Data to Understand the Health of Families in NJ

April 16, 2025

Pocket Guide



NEW JERSEY  
**Kids Count 2025** 

The State of Our Counties

Giving Every Child A Chance<sup>®</sup>

# What is Kids Count?



- KIDS COUNT has comprehensive data related to children and families in one place
- Assess change over time with trend data
- Gives a “snapshot” of children and families
- Easily accessible and meaningful



# Where do we get our data?

## Federal Sources:

- U.S Census Bureau
- Bureau of Labor Statistics
- Internal Revenue Services

## State Sources:

- NJ Dept. of Education
- NJ Dept. of Health
- NJ Dept of Children and Families
- NJ Dept. of Human Services

And more!

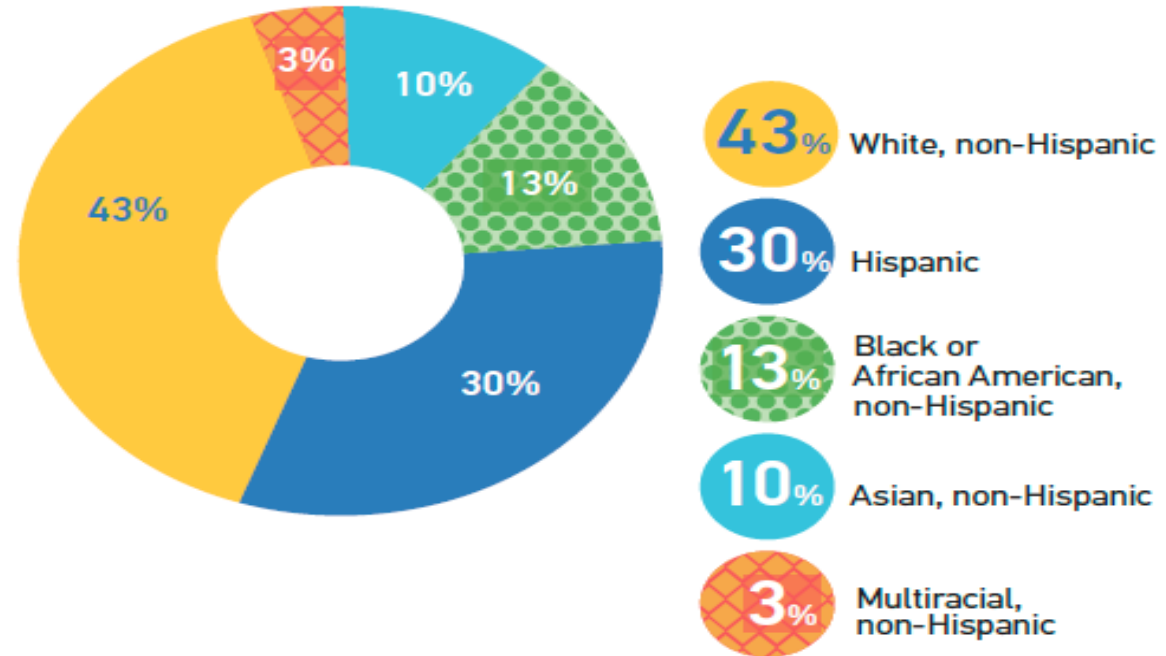
# Demographic Snapshot: Children in New Jersey

# 2,010,290



children (under 18 years) are living in the Garden State...  
and every 1 in 4 are under the age of 5.

## *New Jersey Children Are*



*Graph is representative of population under age 20. Some racial groups were <1% and are excluded from the graph above.*

# New Jersey has seen a Decrease in Children Living below the Federal Poverty Level

Children Living Below the Federal Poverty Level in New Jersey			
2014-2018		2019-2023	
Number	%	Number	%
288,675	15%	266,599	13%

## Federal Poverty Thresholds for a Family of Four

	2023
50%	\$15,450
100%	\$30,900
200%	\$61,800

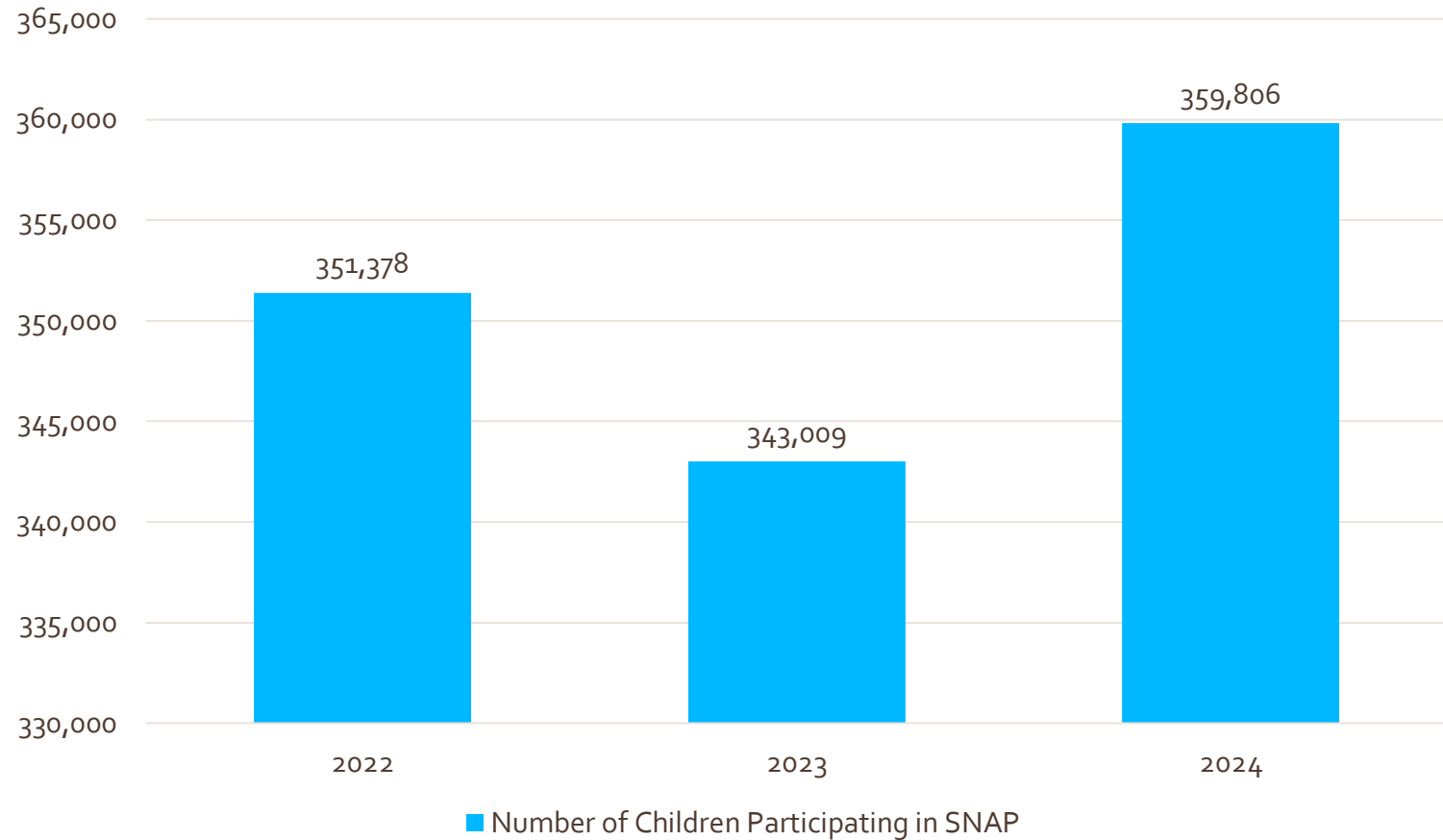
*Note: ACNJ is using 2023 Federal Poverty Thresholds because most recent Census Bureau American Community Survey data is 2023.*

The chart to the left reflects the Federal Poverty Thresholds for a family of four (2 adults and 2 children). A family making under a certain poverty threshold would be considered the following:

- <50% = Extreme poverty
- <100% = Poverty
- <200% = Low-income

Children  
Participation in  
SNAP is  
Varying Over  
the Years

## Number of New Jersey's Children Participating in SNAP



# How is School Breakfast & Lunch Participation Changing in New Jersey?

## Children Receiving Free or Reduced-Price School Breakfast

	2022 (<185% of FPL)	2023 (<200% of FPL)	2024 (<225% of FPL)
ADP Reduced	17,954	20,289	18,372
ADP Free	174,097	195,780	211,903
Total	192,051	216,069	230,275

## Children Receiving Free or Reduced-Price School Lunch

	2022 (<185% of FPL)	2023 (<200% of FPL)	2024 (<225% of FPL)
ADP Reduced	43,446	45,627	40,451
ADP Free	298,763	325,204	361,246
Total	342,209	370,831	401,697



Despite Changes in Eligibility, there is Still Work to Be Done in Providing Free or Reduced-Price Meals to Students Across New Jersey

### Free and Reduced-Price Student Participation in Breakfast per 100 Participating in Lunch

	2022	2023	2024
Atlantic	64%	64%	66%
Bergen	31%	34%	39% ←
Burlington	40%	43%	44% ←
Camden	58%	63%	61%
Cape May	61%	58%	61%
Cumberland	73%	74%	70%
Essex	71%	73%	72%
Gloucester	51%	48%	50% ←
Hudson	70%	70%	69%
Hunterdon	16%	20%	32% ←
Mercer	49%	53%	54% ←
Middlesex	50%	55%	52% ←
Monmouth	39%	42%	40% ←
Morris	34%	40%	39% ←
Ocean	52%	52%	51% ←
Passaic	64%	65%	64%
Salem	61%	62%	64%
Somerset	45%	44%	46% ←
Sussex	38%	40%	41% ←
Union	47%	52%	51% ←
Warren	44%	48%	45% ←
<b>New Jersey</b>	<b>56%</b>	<b>58%</b>	<b>57%</b>

Note: Data are as of October of each year.

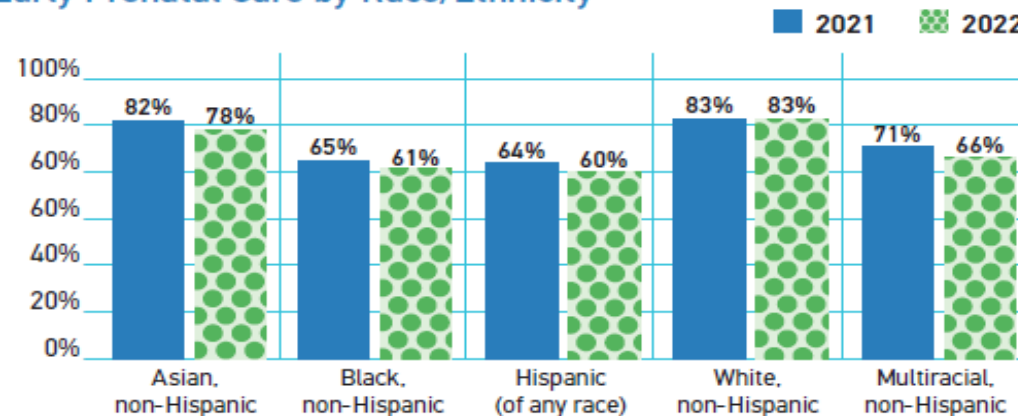
13 Counties with Rates Lower than that of the State



# How are New Jersey's Youngest Faring?

Disparities are present when broken down by race/ethnicity.

Percentage of Expecting Women Receiving Early Prenatal Care by Race/Ethnicity



Percentage of Preterm Births by Race/Ethnicity

	Asian, non-Hispanic	Black, non-Hispanic	Hispanic (of any race)	White, non-Hispanic	Other Single Race, non-Hispanic	Multiracial, non-Hispanic
2021	8.3%	13.1%	10.0%	7.8%	9.8%	9.2%
2022	8.5%	13.3%	9.8%	7.9%	10.5%	8.8%

Percentage of Babies Born with Low Birthweights by Race/Ethnicity

	Asian, non-Hispanic	Black, non-Hispanic	Hispanic (of any race)	White, non-Hispanic	Other Single Race, non-Hispanic	Multiracial, non-Hispanic
2021	9.1%	12.8%	7.8%	5.9%	9.0%	9.7%
2022	9.1%	12.9%	7.9%	5.9%	8.0%	9.2%

Majority of Counties in New Jersey have seen a decrease in NJ FamilyCare Recipients Under Age 19

#### NJ FamilyCare/Medicaid Recipients Under Age 19

	2022	2023	2024	22-24 % Change
Atlantic	34,929	36,152	32,339	-7%
Bergen	55,060	58,041	52,448	-5%
Burlington	31,477	33,679	30,862	-2%
Camden	65,129	67,899	59,820	-8%
Cape May	8,166	8,317	7,266	-11%
Cumberland	26,917	28,137	26,096	-3%
Essex	109,177	115,989	106,953	-2%
Gloucester	22,553	23,566	21,404	-5%
Hudson	82,245	86,164	78,403	-5%
Hunterdon	4,445	4,725	4,403	-1%
Mercer	39,296	42,729	41,183	5%
Middlesex	72,086	76,220	69,528	-4%
Monmouth	39,740	41,588	37,959	-4%
Morris	20,185	22,066	20,622	2%
Ocean	93,105	99,096	97,351	5%
Passaic	79,100	81,882	72,837	-8%
Salem	7,577	7,842	7,118	-6%
Somerset	17,524	18,821	17,544	0%
Sussex	6,928	7,341	6,573	-5%
Union	61,526	65,572	61,079	-1%
Warren	7,733	8,200	7,451	-4%
<b>New Jersey</b>	<b>885,881</b>	<b>934,905</b>	<b>859,972</b>	<b>-3%</b>

**859,972**

is the number of NJ FamilyCare recipients under the age of 19 in 2024.



# New Study Shows Lack of Dental Care Available to New Jersey's Young Children

## Number of Dental Practices Listed in Ages 0-6 MCO\* Directories

2024

	Number of Dental Practices Listed in 0-6 MCO* Directories, 2024	% of the 0-6 Directory Listings with Accurate Information that Practice Provides Dental Care for 2-year-olds	% of 0-6 Directory Listing with Accurate Insurance Network Information
Atlantic	26	38%	58%
Bergen	68	53%	54%
Burlington	29	38%	52%
Camden	56	39%	61%
Cape May	6	50%	88%
Cumberland	19	63%	84%
Essex	97	56%	64%
Gloucester	17	53%	82%
Hudson	84	48%	54%
Hunterdon	7	43%	86%
Mercer	34	56%	71%
Middlesex	86	15%	59%
Monmouth	71	55%	65%
Morris	33	45%	70%
Ocean	41	34%	66%
Passaic	53	47%	66%
Salem	8	25%	38%
Somerset	25	40%	56%
Sussex	4	75%	50%
Union	53	70%	79%
Warren	7	43%	57%
New Jersey	824	49%	63%

\*MCO stands for Medicaid Managed Care Organization. With managed care, beneficiaries enroll in a health plan or MCO that coordinates members' health and offer special services as well as usual NJ FamilyCare Medicaid benefits. For more information, visit <https://www.nj.gov/humanservices/dmahs/info/resources/care/>.

# Availability of Licensed Child Care Centers Varies Across the State

Number of Licensed Child Care Centers

	2021	2022	2023	2024	21-24 % Change
Atlantic	103	103	103	102	-1%
Bergen	443	443	430	440	-1%
Burlington	142	142	148	149	5%
Camden	215	223	218	223	4%
Cape May	27	26	27	27	0%
Cumberland	67	71	76	76	13%
Essex	478	471	480	480	0%
Gloucester	125	127	121	120	-4%
Hudson	393	403	403	407	4%
Hunterdon	73	62	61	63	-14%
Mercer	200	193	197	196	-2%
Middlesex	329	336	338	341	4%
Monmouth	262	253	256	259	-1%
Morris	243	243	241	243	0%
Ocean	156	155	157	163	4%
Passaic	237	246	249	248	5%
Salem	19	19	20	19	0%
Somerset	159	157	155	150	-6%
Sussex	56	57	60	59	5%
Union	265	282	279	278	5%
Warren	44	45	48	49	11%
<b>New Jersey</b>	<b>4,036</b>	<b>4057</b>	<b>4067</b>	<b>4,092</b>	<b>1%</b>

Data as of December 31 of each year.

Capacity does  
not Mean All  
Seats are Filled

### Capacity of Licensed Child Care Centers

	2021	2022	2023	2024	21-24 % Change
Atlantic	8,487	8,324	8,431	8,199	-3%
Bergen	43,852	44,450	42,732	43,445	-1%
Burlington	14,415	14,476	15,533	15,882	10%
Camden	21,288	22,796	22,054	22,831	7%
Cape May	1,943	1,718	1,908	1,931	-1%
Cumberland	7,050	7,250	7,539	7,666	9%
Essex	43,957	44,811	44,967	46,111	5%
Gloucester	10,822	11,021	10,779	10,542	-3%
Hudson	34,065	34,787	35,765	35,785	5%
Hunterdon	7,133	5,280	5,322	5,434	-24%
Mercer	19,628	19,019	19,569	19,806	1%
Middlesex	33,464	34,130	34,854	35,617	6%
Monmouth	25,422	25,426	25,843	26,256	3%
Morris	23,055	23,598	23,501	23,742	3%
Ocean	15,097	15,103	16,174	17,352	15%
Passaic	25,912	26,671	26,795	25,869	0%
Salem	1,245	1,311	1,458	1,415	14%
Somerset	19,352	19,058	18,781	18,211	-6%
Sussex	3,641	3,689	3,890	3,861	6%
Union	24,763	26,726	26,578	27,253	10%
Warren	3,087	3,154	3,257	3,252	5%
<b>New Jersey</b>	<b>387,678</b>	<b>392,798</b>	<b>395,730</b>	<b>400,460</b>	<b>3%</b>

*Data as of December 31 of each year.*

While 3<sup>rd</sup> graders performing similarly in both English Language Arts & Math...

8<sup>th</sup> graders are not at par on Math

Percentage of New Jersey's 3rd Graders by Race/Ethnicity Meeting or Exceeding Expectations on New Jersey State Learning Assessment

	English Language Arts			Mathematics		
	2021-22	2022-23	2023-24	2021-22	2022-23	2023-24
Asian	71%	70%	70%	80%	78%	79%
African American	26%	26%	30%	23%	25%	27%
Hispanic	28%	28%	29%	27%	29%	31%
White	52%	51%	53%	59%	58%	60%
Other	50%	51%	53%	53%	53%	56%
<b>Total</b>	<b>42%</b>	<b>42%</b>	<b>44%</b>	<b>45%</b>	<b>46%</b>	<b>48%</b>

*Note: Some racial groups had a suppressed number of valid scores and for this reason are excluded from the table above.*

Percentage of New Jersey's 8th Graders by Race/Ethnicity Meeting or Exceeding Expectations on New Jersey State Learning Assessment

	English Language Arts			Mathematics		
	2021-22	2022-23	2023-24	2021-22	2022-23	2023-24
Asian	82%	84%	83%	36%	41%	41%
African American	32%	38%	37%	7%	8%	10%
Hispanic	38%	42%	39%	11%	12%	13%
White	60%	64%	62%	21%	25%	27%
Other	57%	60%	59%	18%	21%	22%
<b>Total</b>	<b>51%</b>	<b>55%</b>	<b>53%</b>	<b>15%</b>	<b>18%</b>	<b>19%</b>

*Note: Some racial groups had a suppressed number of valid scores and for this reason are excluded from the table above.*

44%

of 3rd graders in 2023-24 met or exceeded expectations on the English Language Arts portion of the NJSLA. This is a small increase of 2 percentage points from the previous year.

# Thank you!

Visit us at [acnj.org](http://acnj.org)