

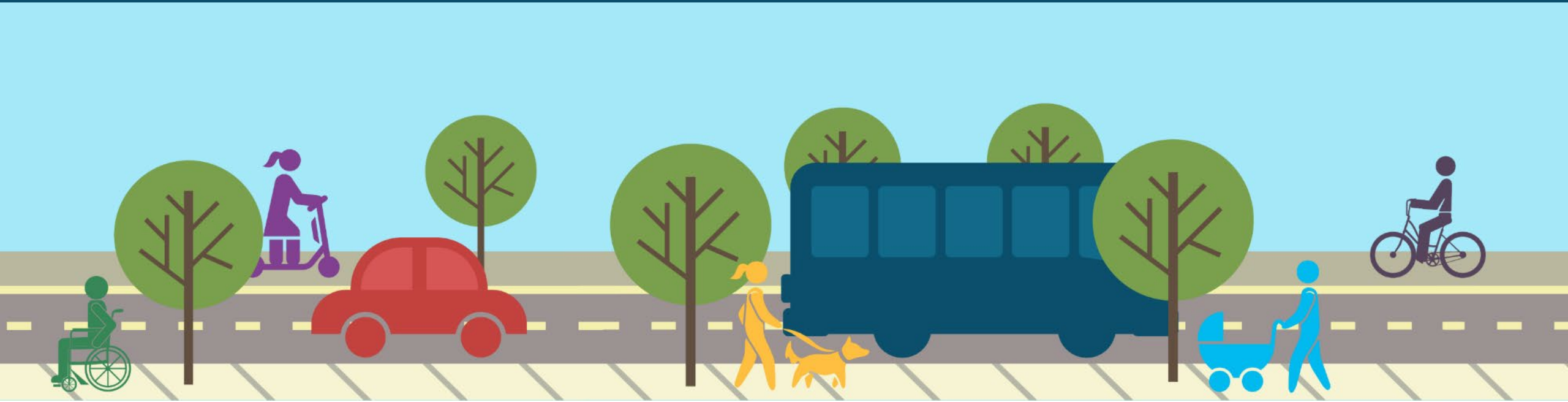


RUTGERS-NEW BRUNSWICK
Edward J. Bloustein School
of Planning and Public Policy
Alan M. Voorhees Transportation Center

Getting There Matters

How Active Transportation Creates Connected Communities for Families

Leigh Ann
Von Hagen, AICP, PP



POLL

Which of the following transportation initiatives have you heard about?

1. Safe Routes to School
2. Complete Streets
3. Vision Zero
4. Safe System Approach
5. None of these

CRASH

~~ACCIDENT~~

**HOW MANY CRASHES
DO YOU THINK TAKE PLACE
ANNUALLY IN NEW JERSEY?**



YouTube Is Zero Achievable?

Pedestrian and Bicyclist Fatalities as a Percentage of Total Traffic Fatalities

Year	New Jersey	
	Pedestrians	Bicyclists
2023	25%	4%
2024	34%	3%
2025	32%	2%

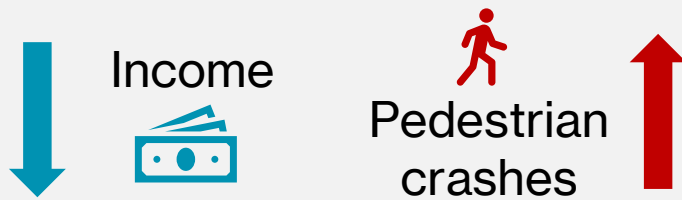
Nationwide in 2023, pedestrians comprised **18%** of all traffic fatalities.

NJ categorizes e-bikes and e-scooters as pedestrians. As of 2024, some e-bikes are categorized as “personal conveyance.”

*Data sources: NHTSA Fatality Analysis Reporting System; New Jersey State Police - Statewide Fatal Crash Statistics.
Data accessed March 16, 2026*

Who is most at risk?

In New Jersey



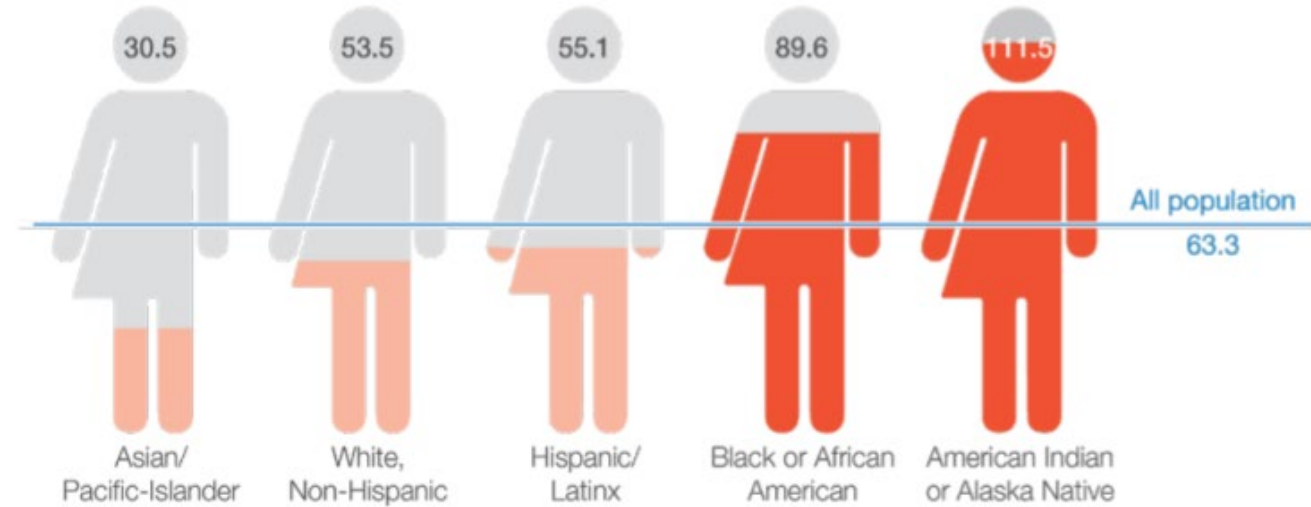
People over 65

16.6% of the population

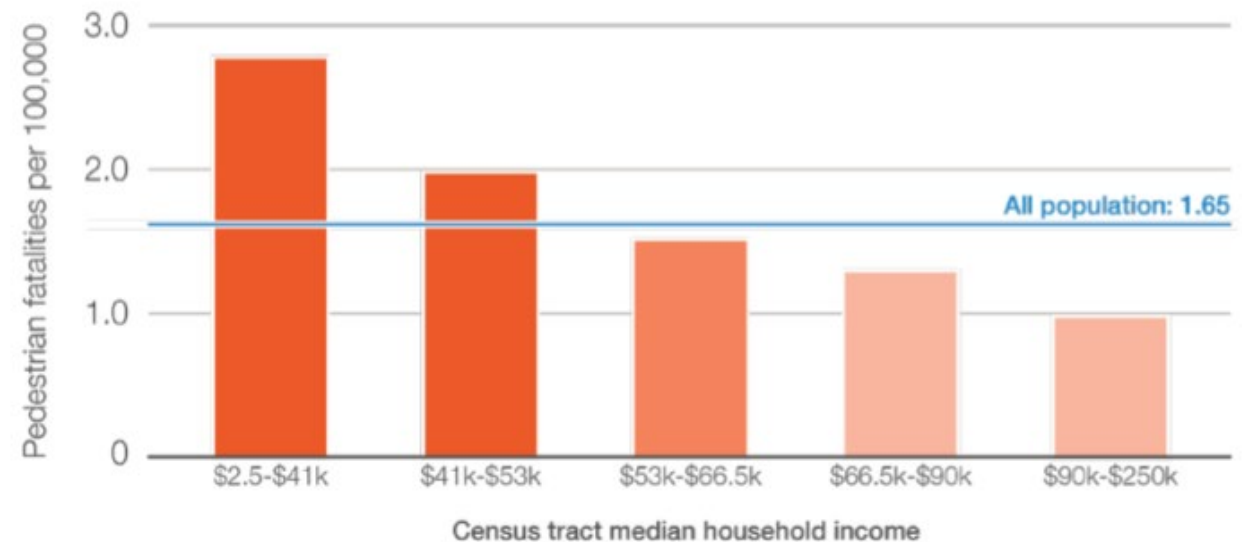
26.7% of pedestrian fatalities

Image source: Smart Growth America – Dangerous by Design 2021

Pedestrian Safety Risk by Race (2010-19)



Pedestrian Fatalities by Household Income (2010-19)







**How do we create safe
and connected
communities for
families?**

GOAL

**ZERO DEATHS &
SERIOUS INJURIES**

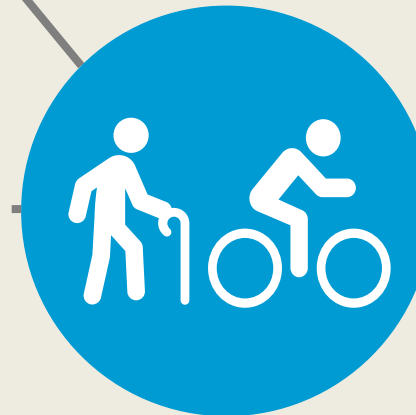


STRATEGY



FHWA SAFE SYSTEM APPROACH

METHODS



**COMPLETE STREETS
SAFE ROUTES TO SCHOOL**

3 TAKEAWAYS



1

Create a Vision



TARGET ZERO GOAL

To eliminate traffic fatalities and serious injuries on New Jersey roads by 2040.

**DO YOU THINK A GOAL
OF ZERO DEATHS
IS ACHIEVABLE IN NEW JERSEY?**



**How do we achieve
zero deaths
& serious injuries?**



New Jersey Target Zero Commission

13 State Agencies



Target Zero Commission Member Agencies

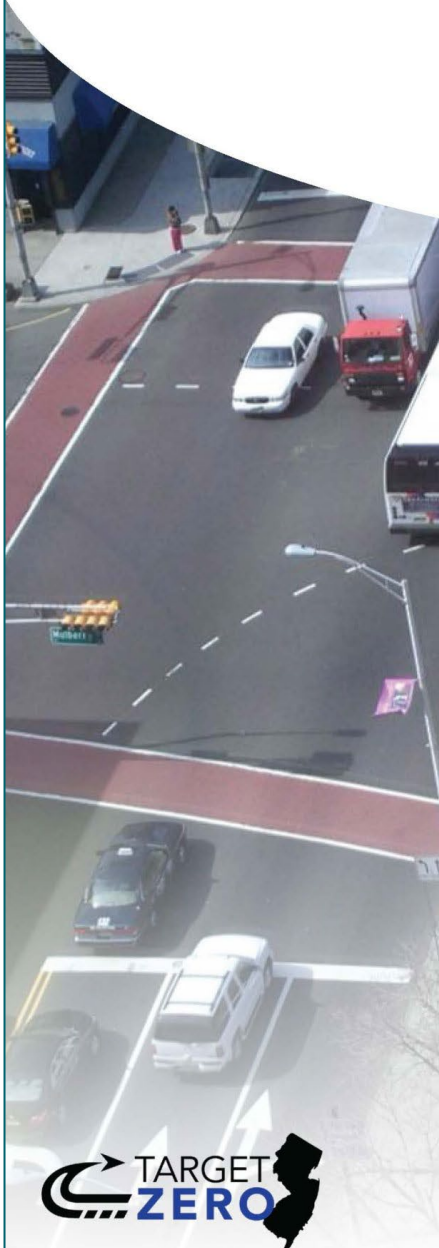
New Jersey Department of Transportation (NJDOT)
 New Jersey State Police (NJSP)
 New Jersey Department of Health (NJDOH)
 New Jersey Department of Community Affairs (NJDCOA)
 New Jersey Motor Vehicle Commission (NJMVC)
 New Jersey Department of Human Services (NJHHS)
 New Jersey Division of Highway Traffic Safety (NJDHHS)

New Jersey Department of Environmental Protection (NJDEP)
 NJ TRANSIT (NJT)
 New Jersey Turnpike Authority (NJTA)
 Delaware Valley Regional Planning Commission (DVRPC)
 North Jersey Transportation Planning Authority (NJTPA)
 South Jersey Transportation Planning Organization (SJTPO)



NEW JERSEY TARGET ZERO ACTION PLAN 2025

Eliminating Traffic Fatalities and
Serious Injuries by 2040





What do we mean by Safe System Approach?

Traditional Approach



Traffic deaths are inevitable

Perfect human behavior

Prevent collisions

Individual responsibility

Saving lives is expensive

Safe System Approach



Traffic deaths are preventable

Account for human failings in approach

Prevent fatal and severe crashes

Systemic approach

Saving lives is not expensive

2

Make it safer and more accessible

for everyone!

GOAL

**ZERO DEATHS &
SERIOUS INJURIES**



STRATEGY



FHWA SAFE SYSTEM APPROACH

METHODS



**COMPLETE STREETS
SAFE ROUTES TO SCHOOL**

NEW JERSEY SAFE ROUTES PROGRAM VISION

The NJ Safe Routes Vision is Safe Routes for All

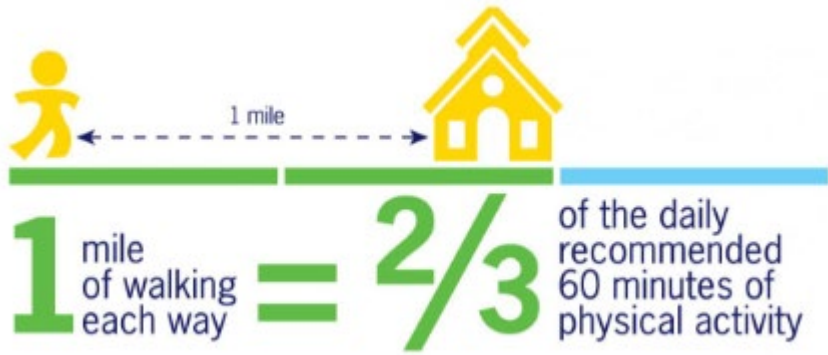
Safe Routes for All Provides safe and equitable access to active transportation for people of all ages and abilities from all backgrounds and neighborhoods in New Jersey.

NEW JERSEY Safe Routes



saferoutesnj.org





Better focus, improved concentration & less distraction

Reduced traffic congestion at arrival and dismissal

Stronger student friendships & relationships through walking and bicycling

Positive social connections for families & neighbors

Fewer absences & less tardiness when students walk or bike in groups

Learn & practice street safety



**Safe
Routes
to School**

Would you let an **eight-year-old** child walk here on their own?


Do you think drivers go **25 mph** in this school zone?



Do you think drivers go 25 mph on this road?

1. Yes
2. No
3. I don't Know

Before: 2007 Photo



Do you think drivers go 25 mph on this road?

1. Yes
2. No
3. I don't Know

After: 2018 Photo

Do you think drivers go 25 mph on this road?

1. Yes
2. No
3. I don't Know



Before: 2009 Photo

Do you think drivers go 25 mph on this road?

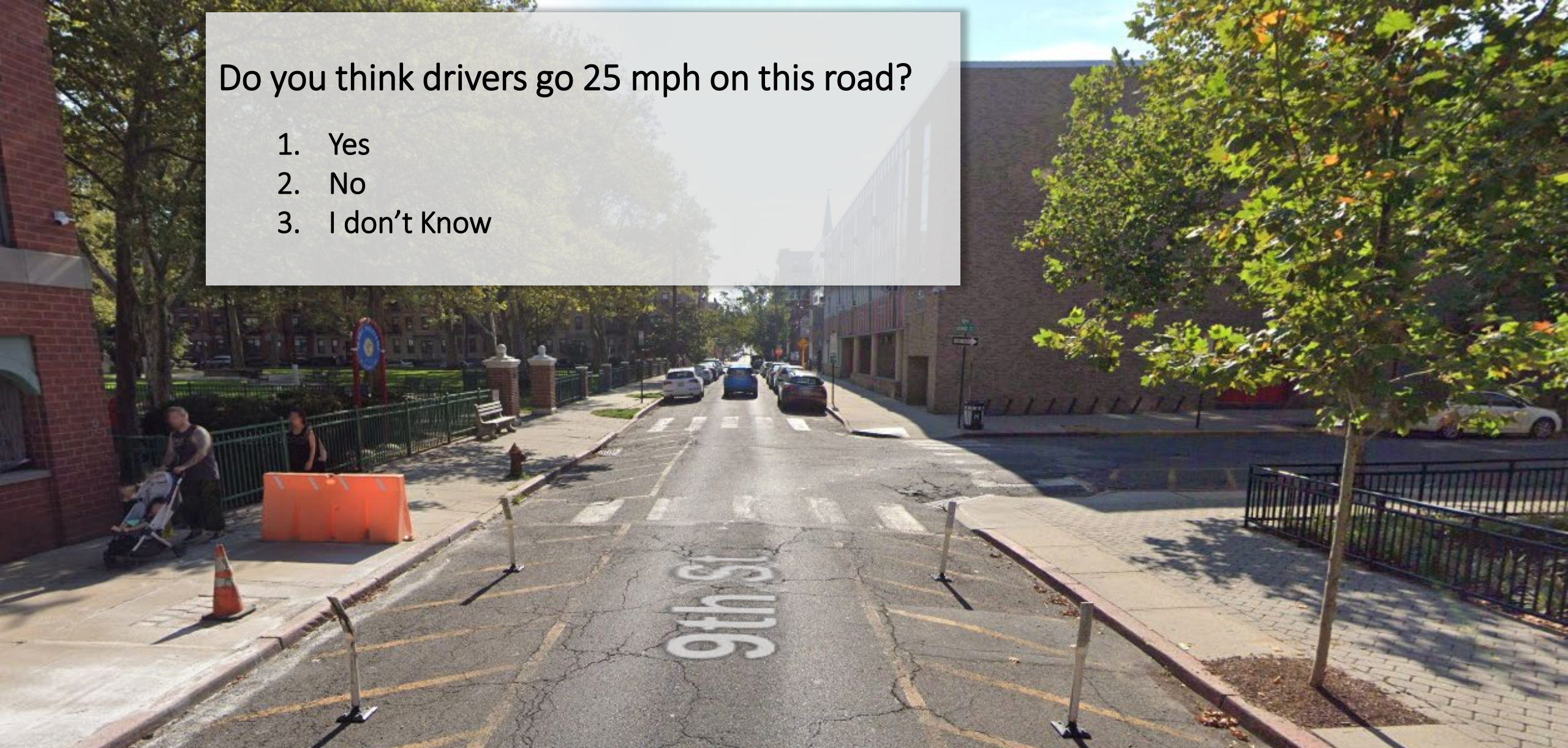
1. Yes
2. No
3. I don't Know



After: 2023 Photo

Do you think drivers go 25 mph on this road?

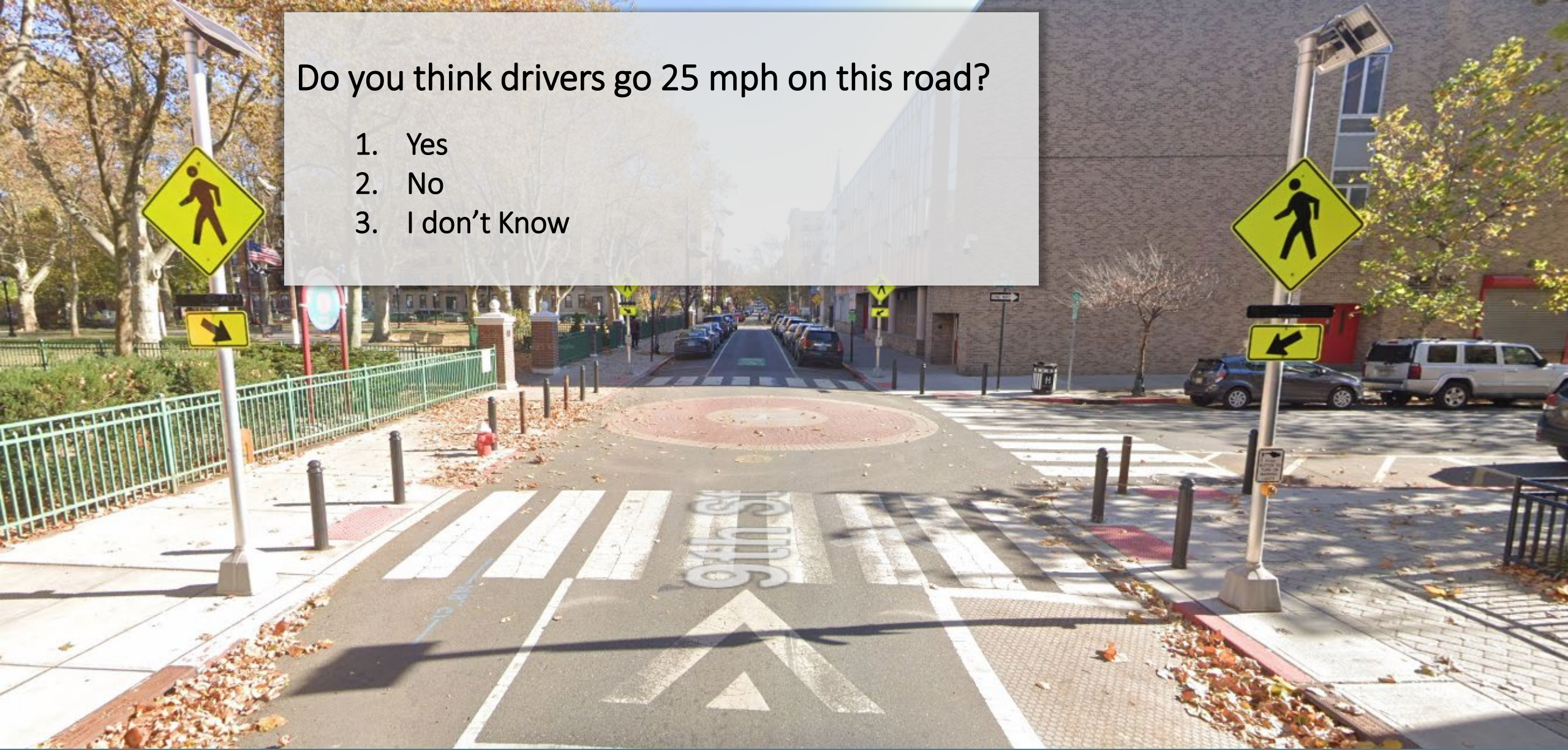
1. Yes
2. No
3. I don't Know



Before: 2020 Photo

Do you think drivers go 25 mph on this road?

1. Yes
2. No
3. I don't Know



After: 2024 Photo



Start with the School Zone





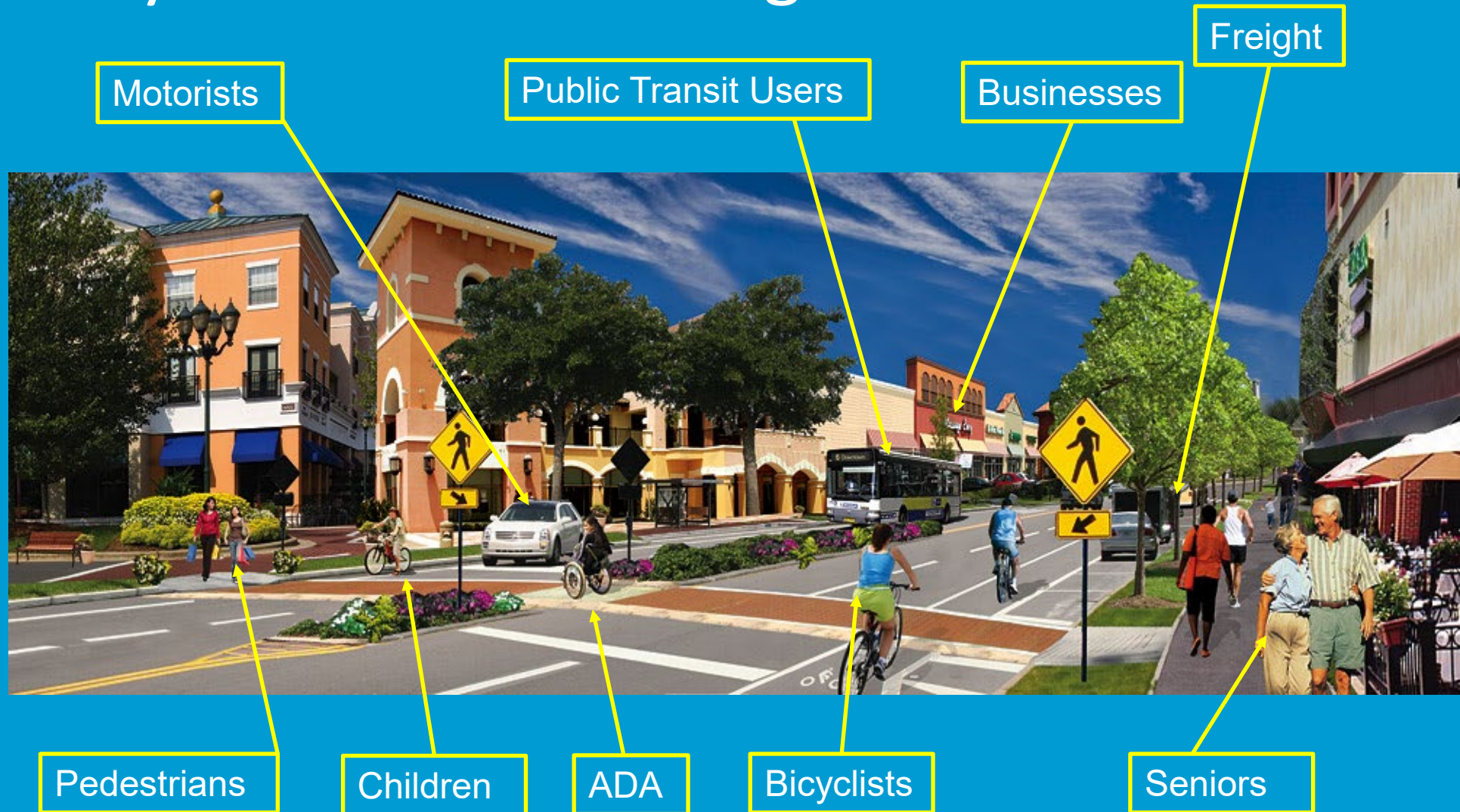
What do we mean by Complete Streets?

What are Complete Streets?

1. **Complete Streets** are designed for everyone
2. Design of Complete Streets is **based on local context**
3. Address **quality of life, not just safety**
4. They balance the needs of ...
5. ... **ALL MODES, ALL USERS, and ALL ABILITIES ...**



Who are you accommodating?



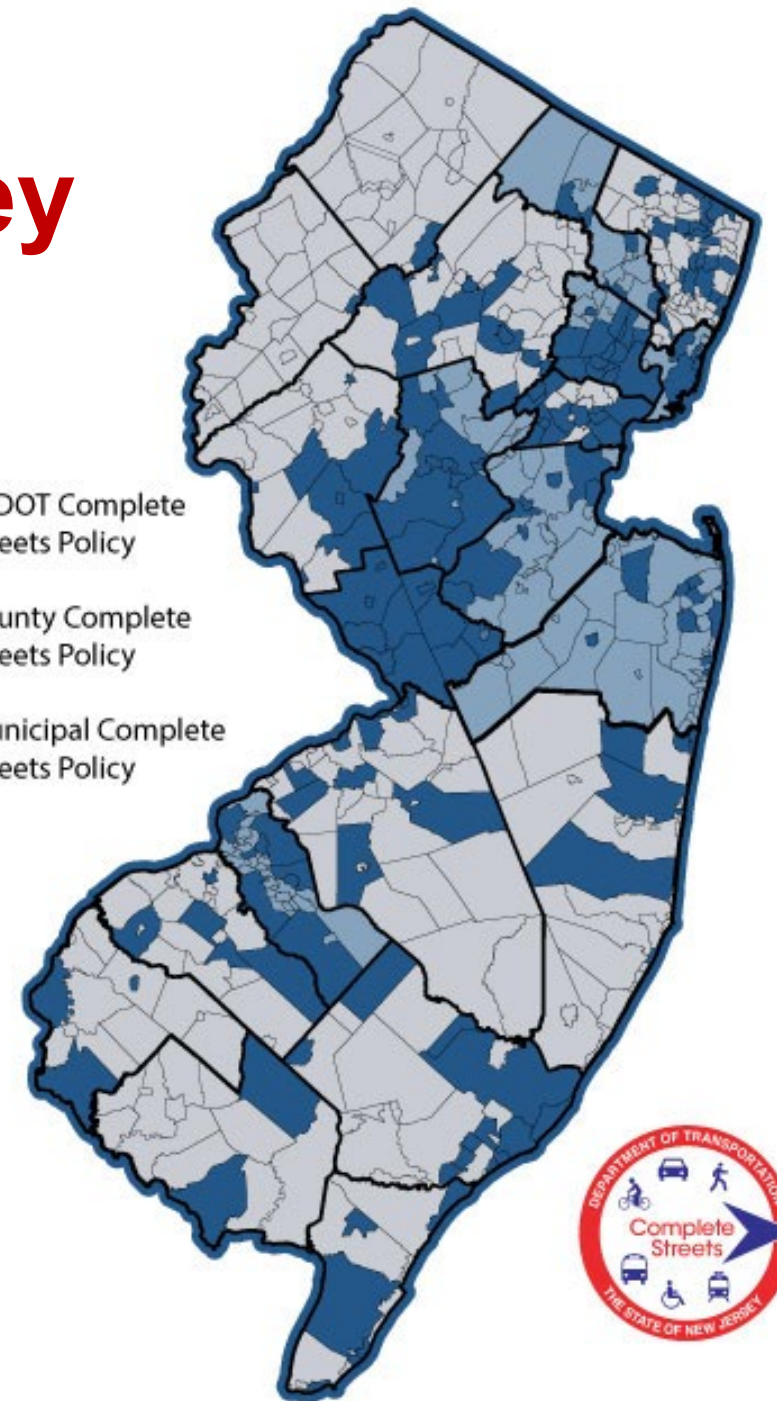
How will you accommodate them safely?

Complete Streets in New Jersey

State Policy **1**
County Policies **8** (out of 21)
Municipal Policies **183** (out of 554)

as of August 2025

-  NJDOT Complete Streets Policy
-  County Complete Streets Policy
-  Municipal Complete Streets Policy





Public Health
& Safety



Green Streets



Economy



Equity

COMPLETE & GREEN STREETS FOR ALL

MODEL COMPLETE STREETS POLICY & GUIDE

MAKING NEW JERSEY'S COMMUNITIES HEALTHY, EQUITABLE, GREEN & PROSPEROUS

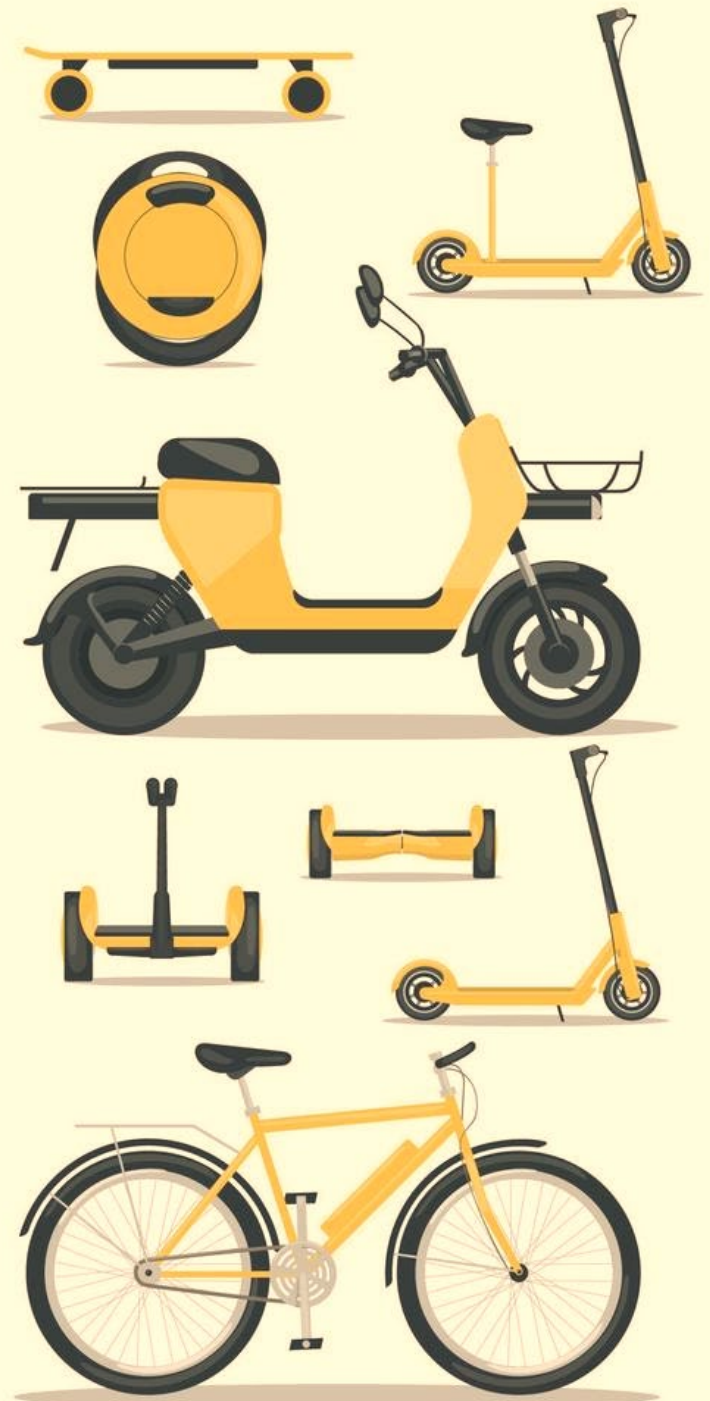


JULY 2019
(Updated January 2020)

njbikeped.org/complete-green-streets-for-all-model-policy-guide

What is micromobility?

A range of compact, electric- and human-powered devices designed for short-distance travel, including traditional bicycles, e-bikes, e-scooters, and other low-speed wheeled devices.





E-Moto



E-Bike

Complete Streets Policy that Considers Autism and Intellectual Disabilities



Implement Complete Streets Policy




Develop Universal Design Concepts



Encourage Local Policy Adoption with ASD/IDD





Marcus Wilson
NJTIP GRADUATE



**NJ Travel
Independence Program
@ Rutgers (NJTIP)**

Travel instruction for
people with disabilities
and older adults

Email: njtip_info@njtip.rutgers.edu

3

Find partners & reach out

Contact NJDOT Resource Centers

NEW JERSEY
Safe Routes to School



www.saferoutesnj.org



NJDOT Safe Routes to School
Resource Center

saferoutesnj.org

Telephone: (848) 932-7901

Email: srts@ejb.rutgers.edu

R | RUTGERS-NEW BRUNSWICK
Edward J. Bloustein School
of Planning and Public Policy



NJ BICYCLE & PEDESTRIAN
RESOURCE CENTER
Educate. Encourage. Empower.



NJDOT Bicycle & Pedestrian Resource
Center

njbikeped.org

Telephone: (848) 932-3714

Email: bikeped@ejb.rutgers.edu



Subscribe to Newsletters & Visit Social Media



- @SafeRoutesNJ
- @njbikeped



saferoutesnj.org
njbikeped.org



**Safe Routes
SCOOP**



**Sign Up for the NJ
Walks and Bikes
Newsletter**

***Subscribe to NJ SRTS
& NJ Bike/Ped Newsletters***



**NEW JERSEY
Safe Routes
Recognition Program**

- Safe Routes to School
- Complete and Green Streets for All
- Bicycle and/or Pedestrian Audit
- Bicycle and/or Pedestrian Plan
- Bicycle and/or Pedestrian Improvements



- Safe Routes to School District Policy
- Complete and Green Streets for All
- Bicycle and Pedestrian Safety & Promotion
- School Travel Plan for Walking and Bicycling

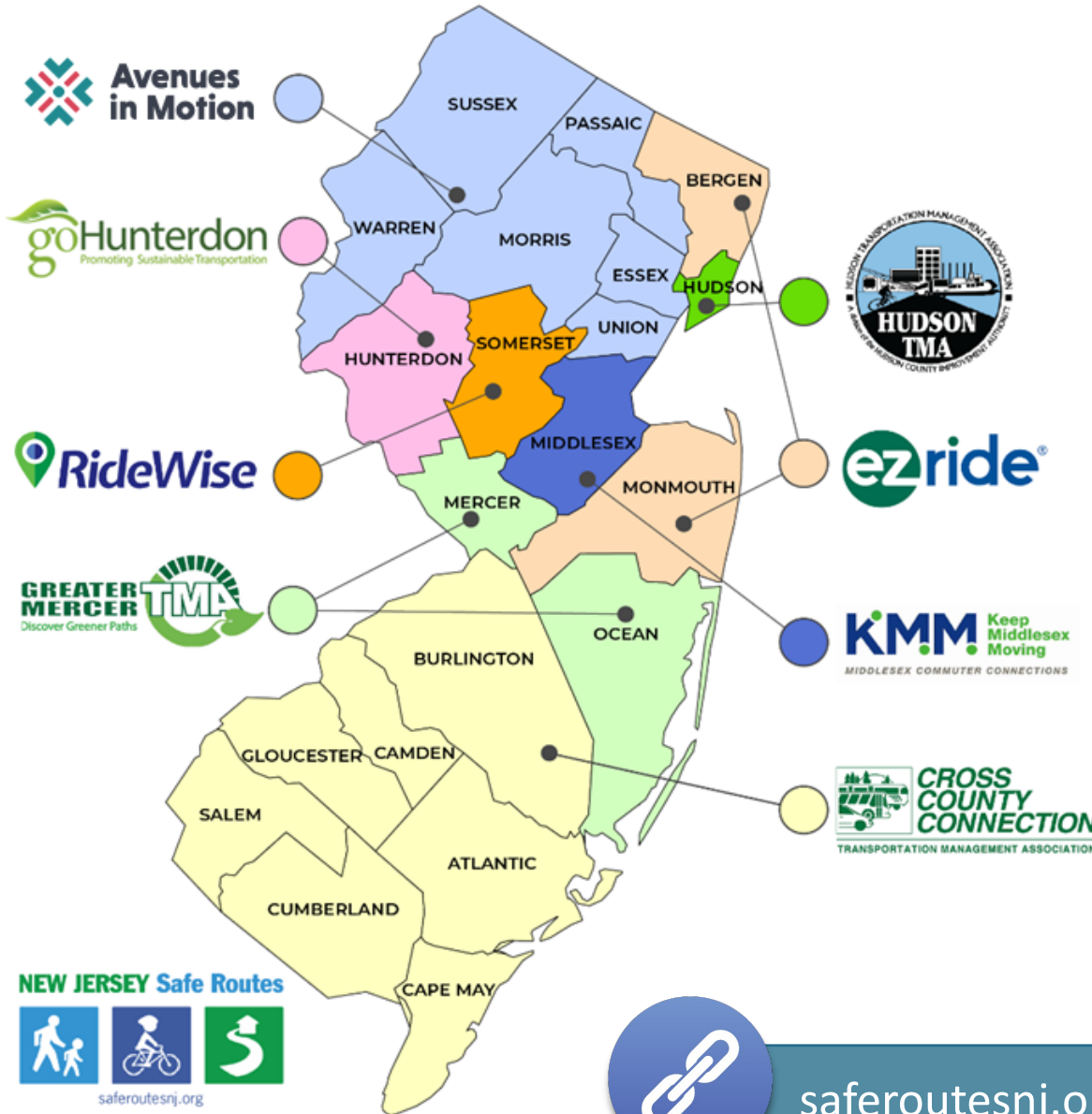


**South Jersey
Transportation
Planning Organization**

- Bicycle Corridor or Network Plan
- Complete Streets Conceptual Rendering
- Temporary Demonstration Project Guidance
- Walkable Community Workshop

8 NJ Transportation Management Agencies (TMA)

The counties below are serviced by multiple Transportation Management Associations (TMAs) based on the municipality:



Passaic County

EZ Ride	Clifton, Haledon, Hawthorne, North Haledon, Passaic, Paterson, Prospect Park
Avenues in Motion	Bloomington, Little Falls, Pompton Lakes, Ringwood, Totowa, Wanaque, Wayne, West Milford, Woodland Park

Essex County

EZ Ride	Belleville, Bloomfield, Caldwell, Cedar Grove, East Orange, Essex Fells, Glen Ridge, Irvington, Maplewood, Montclair, Newark, North Caldwell, Nutley, Orange, South Orange, Verona, West Orange
Avenues in Motion	Fairfield, Livingston, Millburn, Roseland, Short Hills, West Caldwell

Union County

EZ Ride	Clark, Cranford, Elizabeth, Fanwood, Garwood, Kenilworth, Linden, Mountainside, Plainfield, Rahway, Roselle, Roselle Park, Scotch Plains, Springfield, Union, Westfield, Winfield
Avenues in Motion	Berkeley Heights, Murray Hill, New Providence, Summit

Somerset County

Greater Mercer	Montgomery
RideWise	All other municipalities in Somerset County



saferoutesnj.org/find-your-srts-regional-coordinator

NEW JERSEY Safe Routes



saferoutesnj.org

NJDOT Bicycle & Pedestrian Planning Assistance

Local Planning Assistance

- Plans in over 100 towns
- On-call consultants for a variety of projects:
 - bicycle and pedestrian circulation studies, pedestrian safety assessments, trail feasibility studies, bikeway plans, crosswalk improvement plans, etc.



njbikeped.org/njdot-local-bicycle-and-pedestrian-planning-assistance-program



NJDOT Local Aid Resource Center

(609) 649-9395 Ask an Expert

RESOURCE CENTER
NJDOT LOCAL AID

About Us Federal Funding State Funding News Resources

NJDOT LOCAL AID RESOURCE CENTER
ENRICHING NEW JERSEY
THROUGH TRANSPORTATION

njdotlocalaidrc.com

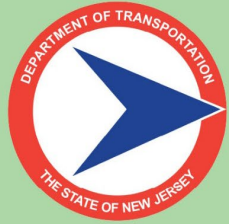
FEDERALLY FUNDED PROGRAMS

STATE FUNDED PROGRAMS

SYSTEM FOR ADMINISTERING GRANTS ELECTRONICALLY (SAGE)

NEW JERSEY TRANSPORTATION INFRASTRUCTURE BANK (NJTIB)

2026 New Jersey
Complete Streets
Summit



“Every Journey Safer”



April 21, 2026



College Ave Student Center,
Rutgers University, New Brunswick,
New Jersey



Register for free at
go.rutgers.edu/completestreets2026



4

Hug Your Planner



FREE HUGS



"Capacity" of a Street

Lockwood

4 *TAKEAWAYS*

1 Create a Vision

2 Make it safer for everyone

3 Reach out to partners

4 Hugs



**Leigh Ann
Von Hagen, AICP, PP**
vtc@ejb.rutgers.edu



THANKS!

**Voorhees Transportation Center
Rutgers University**

vtc.rutgers.edu



RUTGERS-NEW BRUNSWICK
**Edward J. Bloustein School
of Planning and Public Policy**
Alan M. Voorhees Transportation Center