



*for* **ADVOCATES**<sup>®</sup>  
CHILDREN OF NEW JERSEY

Pocket Guide



# NEW JERSEY Kids Count 2025



The State of Our Counties

Giving Every Child A Chance<sup>®</sup>

2025

# NEW JERSEY Kids Count Pocket Guide

## The State of Our Counties

### ACNJ Staff:

Mary E. Coogan, *President & CEO*  
Alena Siddiqui, *Data Analyst*  
Aisha Khan, *Communications Associate*  
Beatriz Alcaraz, *Administrative Assistant*

### ACNJ Board of Trustees Officers:

Jennifer Robinson, Ed.D., *Chair*  
Susan Flynn, *Vice Chair*  
Richard Meth, Esq., *Treasurer*  
Valerie Mauriello, *Secretary*

### Members:

Rosy Arroyo, M.S.  
Heather Baker  
Monique Baptiste  
Bianka Douglas  
Lorraine D'Sylva-Lee  
Maurice Elias, Ph.D.  
Erik Juan Jose Estrada, MPA, MSPA  
Laurence E. Funder, Esq.  
Julie Gallanty, Ed.D.  
Stuart Grant, M.S.W.  
Justin J. Kiczek  
Monica Lallo, Ed.D., M.P.A., M.P.M.  
Eileen Leahey  
Jose Carlos Montes, M. Div.  
Mark Y. Moon, Esq.  
John J. Mulholland, Jr., Esq.  
Arnold B. Rabson, M.D.  
David E. Sims  
Kendell Sprott, M.D., J.D.  
Robert Sterling  
Gerard Thiers  
Richard Trenk, Esq.  
Douglas W. Turnbull  
Charles Venti



*for* **ADVOCATES**  
CHILDREN OF NEW JERSEY

35 Halsey Street  
P.O. Box 32069  
Newark, NJ 07102

(973) 643-3876  
(973) 643-9153 (fax)

[www.acnj.org](http://www.acnj.org)

[advocates@acnj.org](mailto:advocates@acnj.org)

**Advocates for Children of New Jersey would like to thank each of these individuals and agencies for their help and cooperation on this project:**

### National Institute for Early Education Research (NIEER):

Karin Garver, Kate Hodges

### N.J. Department of Agriculture:

Robert Vivian

### N.J. Department of Children and Families:

Aziz Haidi, Chinonso Akunne

### N.J. Department of Education:

Selina Foreman, Jeanette Larkins

### N.J. Department of Health:

Gabrielle Giardinelli

### N.J. Department of Human Services:

Arianne Bascara, Kellie Pushko

### N.J. Department of Treasury:

Amy Martin

### N.J. Juvenile Justice Commission:

Joelle Kenney

### For more information:

Alena Siddiqui  
[asiddiqui@acnj.org](mailto:asiddiqui@acnj.org)  
(973) 643-3876 ext. 205



THE ANNIE E. CASEY FOUNDATION

Kids Count is a national and state-by-state statistical effort to track the state of children, sponsored by the Annie E. Casey Foundation. Advocates for Children of New Jersey would like to thank the Annie E. Casey Foundation for their generous support in making this data book possible.

*Advocates for Children of New Jersey is the trusted, independent voice putting children's needs first for more than 45 years. Our work results in better laws and policies, more effective funding, and stronger services for children and families. And it means that more children are given the chance to grow up safe, healthy, and educated.*

The goal of Advocates for Children of New Jersey's (ACNJ) Kids Count Project is to provide a snapshot of child well-being to policymakers, advocates, grant-makers, and the public to help inform critical decisions for children and families. Effective, relevant data promotes information-driven change from policymakers. Service providers use the data to improve their response to emerging child-related issues in their communities and cities. Grant writers use the data to write proposals and solicit support for programs that help children and families. Concerned residents become better, more informed advocates, using the data to identify and address problems facing children and families in their communities.

Post COVID-19, new data regarding children and families continue to emerge, starting to reveal some noticeable trends. Some of these trends include an increase in the unemployment rate for many counties, and for the state as a whole; an 8% decrease statewide in the number of children receiving NJ FamilyCare between 2023 and 2024; and an increase of 13% in state-funded preschool enrollment for 2023-24 compared to two years ago. Though it will be a long time before we can determine the true effects the pandemic has had on the physical and mental health, educational opportunities, and overall stability of children, youth, and families, the *New Jersey Pocket Guide 2025* serves as a great source to help understand the data trends that have come to light as a result thus far.

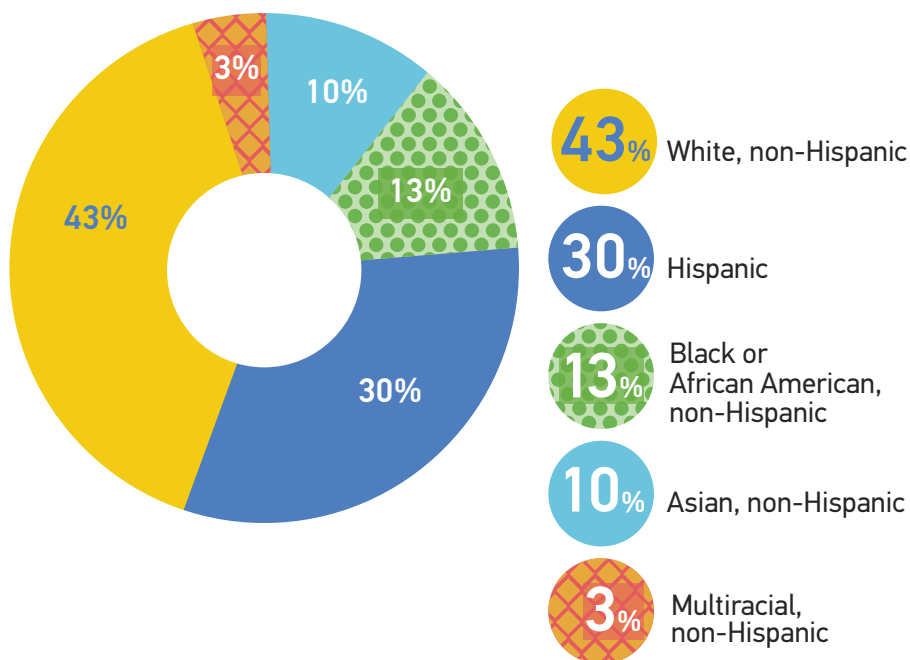
When using the data in this guide, please take into account that some percentages and numbers are based on estimates. Smaller geographies, like counties, sometimes result in suppressed data or significant margins of error. Additionally, certain indicators represent different points in time such as school years, fiscal years, or calendar years. In some instances, data for certain years may have been updated since last collected, and therefore, due to data shifts, will look slightly different than the numbers previously published. Many of the data presented are the most recent data available. Data that are of a 5-year range (e.g 2019-2023) come from the American Community Survey which deems 5-year estimates as the most reliable. Please review the data sources listed at the end of the guide for further information on individual indicators.

# 2,010,290



children (under 18 years) are living in the Garden State...  
and every 1 in 4 is under the age of 5.

## New Jersey Children Are:

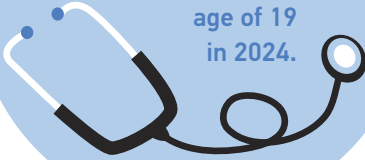


Graph is representative of population under age 20. Some racial groups were <1% and are excluded from the graph above.

# A Look at New Jersey's Kids

**859,972**

is the number of NJ FamilyCare recipients under the age of 19 in 2024.



**57%**

of students who received free or reduced-price lunch also received free or reduced-price breakfast in 2024. This is similar to the previous year despite a change in eligibility.



**60,365**

children were enrolled in state-funded preschool in 2023-24.

This is a 13% increase from 2021-22.



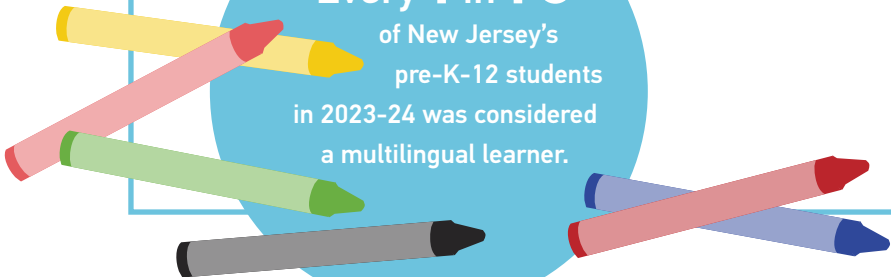
**44%**

of 3rd graders in 2023-24 met or exceeded expectations on the English Language Arts portion of the NJSLA. This is a small increase of 2 percentage points from the previous year.



**Every 1 in 10**

of New Jersey's pre-K-12 students in 2023-24 was considered a multilingual learner.



# 1 Demographics

## Total Population

	2021	2022	2023	21-23 % Change
Atlantic	274,956	275,382	275,213	0%
Bergen	955,383	953,540	957,736	0%
Burlington	464,479	466,101	469,167	1%
Camden	524,093	524,649	527,196	1%
Cape May	95,706	95,405	94,610	-1%
Cumberland	152,083	151,347	152,326	0%
Essex	854,233	849,724	851,117	0%
Gloucester	304,592	306,767	308,423	1%
Hudson	703,448	702,381	705,472	0%
Hunterdon	129,671	129,805	130,183	0%
Mercer	382,172	380,779	381,671	0%
Middlesex	862,364	861,094	863,623	0%
Monmouth	646,517	644,228	642,799	-1%
Morris	510,613	511,219	514,423	1%
Ocean	649,825	655,663	659,197	1%
Passaic	518,376	513,634	513,395	-1%
Salem	65,045	65,157	65,338	0%
Somerset	346,498	347,047	348,842	1%
Sussex	145,721	145,575	146,132	0%
Union	572,833	570,417	572,726	0%
Warren	110,567	110,903	111,252	1%
<b>New Jersey</b>	<b>9,269,175</b>	<b>9,260,817</b>	<b>9,290,841</b>	<b>0%</b>

# 1 Demographics

## Child Population Under Age 18

	2021	2022	2023	21-23 % Change
Atlantic	57,618	57,283	56,590	-2%
Bergen	200,796	198,837	198,334	-1%
Burlington	95,991	95,987	95,748	0%
Camden	119,472	119,325	119,354	0%
Cape May	16,677	16,272	15,968	-4%
Cumberland	37,193	37,159	37,110	0%
Essex	202,072	199,742	198,853	-2%
Gloucester	65,049	65,301	65,192	0%
Hudson	142,078	139,159	137,155	-3%
Hunterdon	24,798	24,751	24,726	0%
Mercer	83,783	83,449	83,627	0%
Middlesex	186,451	184,714	183,504	-2%
Monmouth	135,550	134,139	132,784	-2%
Morris	105,818	105,445	105,264	-1%
Ocean	161,966	163,975	164,894	2%
Passaic	122,624	120,950	120,459	-2%
Salem	14,278	14,345	14,373	1%
Somerset	74,067	73,278	72,863	-2%
Sussex	28,378	28,436	28,459	0%
Union	134,558	133,810	133,643	-1%
Warren	21,420	21,354	21,390	0%
<b>New Jersey</b>	<b>2,030,637</b>	<b>2,017,711</b>	<b>2,010,290</b>	<b>-1%</b>

# 1 Demographics

## Population Under Age 20\* by Race/Ethnicity

2023

	Asian, non-Hispanic	Black or African American, non-Hispanic	Hispanic	White, non-Hispanic	Multiracial, non-Hispanic	TOTAL
Atlantic	7%	17%	31%	40%	4%	63,391
Bergen	16%	5%	28%	46%	3%	219,715
Burlington	7%	18%	15%	54%	6%	105,437
Camden	6%	20%	29%	41%	4%	130,828
Cape May	1%	5%	19%	71%	5%	17,500
Cumberland	1%	17%	50%	27%	4%	40,660
Essex	6%	36%	30%	24%	3%	220,599
Gloucester	3%	13%	13%	66%	5%	73,566
Hudson	14%	12%	49%	22%	3%	150,522
Hunterdon	6%	3%	15%	72%	3%	27,347
Mercer	13%	20%	33%	30%	4%	95,338
Middlesex	28%	10%	32%	27%	3%	209,351
Monmouth	6%	7%	20%	64%	3%	147,652
Morris	13%	4%	21%	59%	4%	117,232
Ocean	2%	3%	15%	78%	2%	178,332
Passaic	5%	10%	53%	29%	2%	134,052
Salem	1%	17%	20%	57%	5%	15,697
Somerset	23%	10%	24%	39%	4%	80,781
Sussex	2%	3%	18%	73%	3%	31,387
Union	6%	19%	42%	30%	3%	147,107
Warren	3%	9%	21%	63%	4%	23,692
<b>New Jersey</b>	<b>10%</b>	<b>13%</b>	<b>30%</b>	<b>43%</b>	<b>3%</b>	<b>2,230,186</b>

Some racial groups are excluded due to low percentages.

\*Data not available for under age 18, so under age 20 is used.



# 1 Demographics

## Child Population Under Age 5

	2021	2022	2023	21-23 % Change
Atlantic	14,264	14,237	14,049	-2%
Bergen	48,317	48,207	48,381	0%
Burlington	23,341	23,751	24,063	3%
Camden	31,208	31,176	31,216	0%
Cape May	4,110	4,000	3,945	-4%
Cumberland	9,441	9,345	9,294	-2%
Essex	53,502	52,250	51,740	-3%
Gloucester	15,290	15,440	15,481	1%
Hudson	45,308	43,674	42,166	-7%
Hunterdon	5,617	5,714	5,833	4%
Mercer	21,398	21,157	21,071	-2%
Middlesex	46,777	45,811	44,932	-4%
Monmouth	32,079	32,219	32,447	1%
Morris	25,253	25,657	26,048	3%
Ocean	47,225	48,172	48,751	3%
Passaic	32,837	32,138	31,952	-3%
Salem	3,510	3,568	3,597	2%
Somerset	17,021	16,906	16,895	-1%
Sussex	6,835	7,027	7,180	5%
Union	35,179	34,753	34,707	-1%
Warren	5,264	5,354	5,322	1%
<b>New Jersey</b>	<b>523,776</b>	<b>520,556</b>	<b>519,070</b>	<b>-1%</b>

# 1 Demographics

## Population Under Age 5 by Race/Ethnicity

2023

	Asian, non-Hispanic	Black or African American, non-Hispanic	Hispanic	White, non-Hispanic	Multiracial, non-Hispanic	TOTAL
Atlantic	7%	19%	34%	35%	5%	14,049
Bergen	15%	6%	31%	44%	4%	48,381
Burlington	7%	20%	18%	49%	6%	24,063
Camden	5%	19%	30%	41%	5%	31,216
Cape May	1%	6%	22%	66%	5%	3,945
Cumberland	1%	18%	53%	24%	4%	9,294
Essex	5%	36%	33%	23%	3%	51,740
Gloucester	3%	15%	16%	61%	5%	15,481
Hudson	18%	11%	43%	24%	4%	42,166
Hunterdon	6%	3%	18%	69%	4%	5,833
Mercer	11%	21%	40%	25%	4%	21,071
Middlesex	28%	11%	35%	23%	3%	44,932
Monmouth	5%	7%	22%	63%	3%	32,447
Morris	14%	4%	24%	55%	4%	26,048
Ocean	1%	3%	13%	80%	2%	48,751
Passaic	6%	10%	57%	25%	2%	31,952
Salem	1%	20%	22%	51%	6%	3,597
Somerset	23%	10%	28%	35%	4%	16,895
Sussex	2%	3%	20%	71%	3%	7,180
Union	6%	19%	46%	27%	3%	34,707
Warren	3%	9%	25%	60%	4%	5,322
<b>New Jersey</b>	<b>10%</b>	<b>14%</b>	<b>32%</b>	<b>41%</b>	<b>3%</b>	<b>519,070</b>

Some racial groups are excluded due to low percentages.

# 1 Demographics

## Languages Spoken in the Home by Percentage of Population 5 and Older

	2014–2018		2019–2023	
	Only Speak English	Speak a language other than English	Only Speak English	Speak a language other than English
Atlantic	73%	27%	73%	27%
Bergen	60%	40%	58%	42%
Burlington	87%	13%	86%	14%
Camden	79%	21%	79%	21%
Cape May	91%	9%	91%	9%
Cumberland	72%	28%	70%	30%
Essex	65%	35%	63%	37%
Gloucester	91%	9%	90%	10%
Hudson	41%	59%	43%	57%
Hunterdon	89%	11%	86%	14%
Mercer	70%	30%	65%	35%
Middlesex	57%	44%	53%	47%
Monmouth	83%	17%	82%	18%
Morris	76%	24%	74%	26%
Ocean	88%	12%	87%	13%
Passaic	52%	48%	50%	50%
Salem	92%	9%	92%	8%
Somerset	70%	31%	65%	35%
Sussex	91%	10%	89%	12%
Union	57%	44%	53%	47%
Warren	88%	12%	85%	15%
<b>New Jersey</b>	<b>69%</b>	<b>31%</b>	<b>67%</b>	<b>33%</b>

Percentages may not total 100% due to rounding.

# 1 Demographics

## Percentage of Households with Children by Type

2019-2023

	Married Couple	Cohabiting Couple	Male Householder, No Spouse/Partner	Female Householder, No Spouse/Partner
Atlantic	61%	13%	4%	22%
Bergen	80%	5%	3%	12%
Burlington	72%	7%	4%	17%
Camden	60%	10%	6%	24%
Cape May	75%	7%	3%	15%
Cumberland	53%	18%	4%	25%
Essex	59%	9%	5%	27%
Gloucester	71%	8%	4%	17%
Hudson	63%	9%	4%	24%
Hunterdon	85%	4%	3%	8%
Mercer	67%	6%	4%	23%
Middlesex	74%	8%	3%	15%
Monmouth	79%	5%	3%	13%
Morris	84%	4%	3%	9%
Ocean	82%	5%	3%	10%
Passaic	62%	12%	3%	23%
Salem	57%	13%	5%	25%
Somerset	80%	6%	3%	11%
Sussex	78%	5%	5%	13%
Union	65%	11%	4%	19%
Warren	73%	9%	5%	13%
<b>New Jersey</b>	<b>71%</b>	<b>8%</b>	<b>4%</b>	<b>18%</b>

Percentages may not total 100% due to rounding.

# 2 Family Economic Security

## How is Poverty Defined?

Since 1965, the federal government has used the poverty threshold to determine the number of individuals living in poverty within the United States. The measure is based on the cost of a basic food diet and adjusted for inflation and family size. The same poverty threshold is used for the entire nation and does not account for the higher cost of living in certain states like New Jersey, where 200% of the poverty threshold, or an annual income of \$61,800 for a family of four, is more reflective of the families struggling to make ends meet. While the poverty threshold is produced by the U.S. Census Bureau, federal poverty guidelines — used to determine eligibility for certain federal programs — are released by the U.S. Department of Health and Human Services and are based on the U.S. Census Bureau's thresholds.

## Federal Poverty Thresholds for a Family of Four

	2023
50%	\$15,450
100%	\$30,900
200%	\$61,800

*Note: ACNJ is using 2023 Federal Poverty Thresholds because most recent Census Bureau American Community Survey data is 2023.*

The chart to the left reflects the Federal Poverty Thresholds for a family of four (2 adults and 2 children). A family making under a certain poverty threshold would be considered the following:

- <50% = Extreme poverty
- <100% = Poverty
- <200% = Low-income

## 2 Family Economic Security

### Children Living Below the Federal Poverty Level

	2014–2018		2019–2023	
	Number	%	Number	%
Atlantic	12,884	23%	10,380	18%
Bergen	15,851	8%	14,892	8%
Burlington	8,373	9%	8,981	9%
Camden	20,695	18%	20,248	17%
Cape May	2,669	17%	1,793	11%
Cumberland	9,416	26%	8,663	23%
Essex	42,922	23%	40,033	20%
Gloucester	5,815	9%	5,462	8%
Hudson	32,898	24%	29,616	21%
Hunterdon	1,427	6%	780	3%
Mercer	12,383	16%	11,453	14%
Middlesex	20,056	11%	19,264	10%
Monmouth	13,505	10%	9,487	7%
Morris	5,178	5%	5,899	6%
Ocean	24,886	18%	26,241	16%
Passaic	30,908	26%	25,350	21%
Salem	2,985	22%	2,854	20%
Somerset	3,591	5%	5,409	7%
Sussex	1,712	6%	2,076	7%
Union	18,161	14%	15,599	12%
Warren	2,360	11%	2,119	10%
<b>New Jersey</b>	<b>288,675</b>	<b>15%</b>	<b>266,599</b>	<b>13%</b>

*"Below the federal poverty level" equates to below 100%, which in 2023 was \$30,900 for a family of four (two adults and two children).*

## 2 Family Economic Security

### What Are Earned Income Tax Credits?

Tax credits are a vital economic support for many low-income working families and an advantage to New Jersey businesses, as many of these dollars are spent in the communities where these families live. Earned Income Tax Credits (EITC) reward work and increase take-home pay for families by lowering the amount of taxes owed and, in some instances, providing a refund.

### N.J. EITC, Recipients with at Least One Dependent Under Age 19

	2021		2022		2023	
	# Credits Issued	Avg. Credit Amount	# Credits Issued	Avg. Credit Amount	# Credits Issued	Avg. Credit Amount
Atlantic	14,658	\$1,170	14,661	\$1,294	14,740	\$1,378
Bergen	18,272	\$1,096	19,417	\$1,277	19,764	\$1,389
Burlington	11,358	\$1,036	11,694	\$1,169	12,025	\$1,253
Camden	23,126	\$1,132	23,781	\$1,267	24,139	\$1,371
Cape May	3,023	\$1,135	3,078	\$1,247	3,069	\$1,348
Cumberland	8,777	\$1,135	8,786	\$1,254	9,187	\$1,364
Essex	40,179	\$1,145	41,132	\$1,301	42,128	\$1,406
Gloucester	8,055	\$1,071	8,446	\$1,193	8,589	\$1,296
Hudson	29,544	\$1,195	30,443	\$1,385	30,709	\$1,495
Hunterdon	1,398	\$1,086	1,444	\$1,203	1,557	\$1,288
Mercer	13,331	\$1,132	14,077	\$1,254	14,704	\$1,366
Middlesex	24,572	\$1,101	25,871	\$1,269	26,679	\$1,384
Monmouth	11,356	\$1,106	11,394	\$1,233	11,427	\$1,327
Morris	6,243	\$1,062	6,603	\$1,208	6,785	\$1,319
Ocean	18,213	\$1,240	18,329	\$1,303	18,203	\$1,394
Passaic	28,794	\$1,186	29,980	\$1,364	31,108	\$1,473
Salem	2,607	\$1,113	2,659	\$1,218	2,778	\$1,319
Somerset	5,205	\$1,081	5,529	\$1,212	5,792	\$1,305
Sussex	2,951	\$1,019	3,216	\$1,153	3,411	\$1,241
Union	20,580	\$1,109	20,925	\$1,264	21,964	\$1,374
Warren	2,935	\$1,100	2,970	\$1,198	3,059	\$1,283
<b>New Jersey</b>	<b>295,567</b>	<b>\$1,137</b>	<b>304,788</b>	<b>\$1,284</b>	<b>312,142</b>	<b>\$1,388</b>

Please note that counties may not add up to N.J. total due to a number of credits where the county of residence was unknown.

## 2 Family Economic Security

### Federal Earned Income Tax Credit

	2020		2021		2022	
	# Credits Issued	Avg. Credit Amount	# Credits Issued	Avg. Credit Amount	% Change Credits Issued	% Change Avg. Credit Amount
Atlantic	24,610	\$2,201	29,070	\$2,033	22,650	\$2,484
Bergen	44,810	\$1,856	54,200	\$1,715	42,820	\$2,115
Burlington	23,200	\$1,947	29,290	\$1,751	21,730	\$2,188
Camden	41,400	\$2,242	50,500	\$2,011	39,730	\$2,494
Cape May	6,110	\$2,006	7,630	\$1,788	5,600	\$2,161
Cumberland	13,980	\$2,328	16,470	\$2,112	13,190	\$2,605
Essex	76,930	\$2,309	86,330	\$2,127	71,580	\$2,577
Gloucester	15,360	\$2,002	19,610	\$1,784	14,710	\$2,234
Hudson	59,130	\$2,193	67,370	\$2,038	55,710	\$2,468
Hunterdon	3,520	\$1,548	4,860	\$1,453	3,250	\$1,772
Mercer	24,570	\$2,197	28,790	\$1,989	23,020	\$2,423
Middlesex	48,700	\$2,055	58,710	\$1,852	46,430	\$2,330
Monmouth	26,190	\$1,839	33,030	\$1,681	23,520	\$2,060
Morris	15,780	\$1,719	20,470	\$1,555	14,670	\$1,929
Ocean	33,400	\$2,371	41,790	\$2,028	31,090	\$2,464
Passaic	51,970	\$2,360	59,500	\$2,139	49,970	\$2,661
Salem	4,830	\$2,174	5,800	\$1,978	4,470	\$2,417
Somerset	12,740	\$1,905	16,380	\$1,726	12,160	\$2,099
Sussex	5,880	\$1,719	7,810	\$1,584	5,510	\$1,954
Union	41,430	\$2,162	47,540	\$1,959	38,720	\$2,392
Warren	5,580	\$2,007	7,290	\$1,785	5,340	\$2,202
<b>New Jersey</b>	<b>580,090</b>	<b>\$2,138</b>	<b>692,360</b>	<b>\$1,935</b>	<b>545,790</b>	<b>\$2,386</b>



## 2 Family Economic Security

### Unemployment Rate

	2021	2022	2023
Atlantic	9.9%	5.4%	5.9%
Bergen	6.3%	3.5%	3.9%
Burlington	5.7%	3.5%	3.9%
Camden	7.1%	4.2%	4.8%
Cape May	9.3%	6.8%	7.6%
Cumberland	8.1%	5.3%	6.5%
Essex	8.3%	4.7%	5.5%
Gloucester	6.4%	3.8%	4.3%
Hudson	7.1%	3.8%	4.4%
Hunterdon	4.9%	3.0%	3.5%
Mercer	5.5%	3.3%	3.9%
Middlesex	6.1%	3.5%	4.1%
Monmouth	5.9%	3.5%	3.8%
Morris	5.3%	3.2%	3.7%
Ocean	6.3%	3.9%	4.2%
Passaic	8.7%	4.8%	5.5%
Salem	7.7%	4.8%	5.5%
Somerset	5.4%	3.2%	3.8%
Sussex	6.3%	3.9%	4.3%
Union	7.0%	4.0%	4.7%
Warren	5.9%	3.6%	4.0%
<b>New Jersey</b>	<b>6.7%</b>	<b>3.9%</b>	<b>4.4%</b>

*Note: According to the Bureau of Labor Statistics, the unemployment rate is the number of unemployed people as a percentage of the labor force (sum of both employed and unemployed).*

## 2 Family Economic Security

### Median Family Income with Children Under 18

	2014–2018	2019–2023	% Change
Atlantic	\$62,334	\$89,314	43%
Bergen	\$126,538	\$167,352	32%
Burlington	\$106,270	\$130,833	23%
Camden	\$81,032	\$104,593	29%
Cape May	\$74,444	\$99,175	33%
Cumberland	\$52,099	\$62,028	19%
Essex	\$70,995	\$92,877	31%
Gloucester	\$113,215	\$136,839	21%
Hudson	\$62,294	\$88,462	42%
Hunterdon	\$157,345	\$180,475	15%
Mercer	\$99,896	\$132,375	33%
Middlesex	\$106,579	\$135,184	27%
Monmouth	\$128,135	\$171,333	34%
Morris	\$150,866	\$185,259	23%
Ocean	\$87,433	\$113,626	30%
Passaic	\$66,275	\$90,378	36%
Salem	\$78,467	\$93,667	19%
Somerset	\$146,465	\$185,699	27%
Sussex	\$108,708	\$144,863	33%
Union	\$86,309	\$112,030	30%
Warren	\$101,635	\$121,198	19%
<b>New Jersey</b>	<b>\$99,606</b>	<b>\$126,827</b>	<b>27%</b>

## 2 Family Economic Security

### Percentage of Households Spending 30% or More of Income on Rent

	2014–2018	2019–2023
Atlantic	61%	55%
Bergen	48%	50%
Burlington	50%	51%
Camden	55%	54%
Cape May	61%	56%
Cumberland	63%	57%
Essex	56%	55%
Gloucester	57%	52%
Hudson	47%	46%
Hunterdon	53%	45%
Mercer	53%	51%
Middlesex	48%	46%
Monmouth	55%	53%
Morris	43%	44%
Ocean	60%	59%
Passaic	58%	55%
Salem	60%	57%
Somerset	46%	48%
Sussex	52%	52%
Union	53%	51%
Warren	50%	48%
<b>New Jersey</b>	<b>52%</b>	<b>51%</b>

## 2 Family Economic Security

### Number of Children Participating in TANF

	2022	2023	2024	22–24 % Change
Atlantic	1,282	1,083	1,060	-17%
Bergen	477	681	555	16%
Burlington	648	719	715	10%
Camden	2,807	2,817	2,875	2%
Cape May	140	153	135	-4%
Cumberland	594	624	690	16%
Essex	2,323	2,658	2,783	20%
Gloucester	503	504	408	-19%
Hudson	2,985	3,123	3,407	14%
Hunterdon	74	59	66	-11%
Mercer	1,297	1,398	1,546	19%
Middlesex	1,044	1,014	1,135	9%
Monmouth	410	407	454	11%
Morris	154	173	212	38%
Ocean	658	646	683	4%
Passaic	2,204	1,799	1,622	-26%
Salem	291	296	321	10%
Somerset	359	378	423	18%
Sussex	46	50	46	0%
Union	1,015	1,042	1,207	19%
Warren	154	160	123	-20%
<b>New Jersey</b>	<b>19,465</b>	<b>19,784</b>	<b>20,466</b>	<b>5%</b>

TANF stands for Temporary Assistance for Needy Families.

To learn more about TANF, visit <https://www.nj.gov/humanservices/wfnj/>.

## 2 Family Economic Security

### Number of Children Participating in SNAP

	2022	2023	2024	22–24 % Change
Atlantic	15,958	14,533	13,526	-15%
Bergen	12,413	13,202	14,049	13%
Burlington	8,365	8,778	9,228	10%
Camden	33,388	32,688	33,969	2%
Cape May	3,118	3,308	3,331	7%
Cumberland	12,987	13,404	13,955	7%
Essex	55,679	54,296	56,366	1%
Gloucester	6,539	6,797	7,248	11%
Hudson	43,429	39,596	42,258	-3%
Hunterdon	1,140	1,245	1,340	18%
Mercer	15,368	16,722	17,909	17%
Middlesex	23,222	22,424	23,655	2%
Monmouth	11,976	12,100	12,865	7%
Morris	4,721	5,336	5,875	24%
Ocean	31,367	32,838	32,182	3%
Passaic	39,137	34,213	35,512	-9%
Salem	3,706	3,746	3,918	6%
Somerset	4,226	4,553	4,875	15%
Sussex	1,457	1,539	1,456	0%
Union	20,230	18,607	23,086	14%
Warren	2,952	3,084	3,203	9%
<b>New Jersey</b>	<b>351,378</b>	<b>343,009</b>	<b>359,806</b>	<b>2%</b>

SNAP stands for Supplemental Nutrition Assistance Program.

To learn more about SNAP, visit <https://www.nj.gov/humanservices/njsnap/>.

## WIC Enrollment and Participation

	2022			2023			2024		
	Enrolled	Participating	% Participating	Enrolled	Participating	% Participating	Enrolled	Participating	% Participating
Atlantic	5,024	4,081	81%	5,341	4,624	87%	5,668	4,967	88%
Bergen	8,027	6,913	86%	8,242	7,235	88%	7,739	6,469	84%
Burlington	4,265	3,550	83%	4,799	4,164	87%	5,221	4,431	85%
Camden	9,754	8,193	84%	10,689	9,031	84%	11,212	9,315	83%
Cape May	1,008	799	79%	1,035	907	88%	1,080	956	89%
Cumberland	4,222	3,418	81%	4,577	3,897	85%	5,061	4,344	86%
Essex	22,237	19,217	86%	24,848	22,154	89%	24,449	20,883	85%
Gloucester	3,229	2,635	82%	3,514	3,132	89%	3,576	3,119	87%
Hudson	17,862	16,659	93%	18,652	17,357	93%	18,186	16,304	90%
Hunterdon	430	368	86%	460	442	96%	454	420	93%
Mercer	8,157	6,750	83%	8,877	7,468	84%	9,405	8,191	87%
Middlesex	14,297	13,422	94%	15,817	15,127	96%	16,112	14,554	90%
Monmouth	7,141	6,746	94%	8,075	7,605	94%	8,534	7,519	88%
Morris	2,977	2,459	83%	2,985	2,506	84%	2,597	2,055	79%
Ocean	24,922	23,497	94%	28,030	26,460	94%	29,799	27,699	93%
Passaic	16,829	14,993	89%	17,438	15,305	88%	16,023	13,681	85%
Salem	984	770	78%	1,037	871	84%	1,144	966	84%
Somerset	3,102	2,814	91%	3,627	3,422	94%	3,460	3,142	91%
Sussex	803	729	91%	943	906	96%	824	729	88%
Union	12,003	10,725	89%	13,877	12,985	94%	14,049	12,901	92%
Warren	1,215	1,033	85%	1,320	1,243	94%	1,246	1,134	91%
<b>New Jersey</b>	<b>168,488</b>	<b>149,771</b>	<b>89%</b>	<b>184,183</b>	<b>166,841</b>	<b>91%</b>	<b>185,839</b>	<b>163,779</b>	<b>88%</b>

WIC is short for the New Jersey Supplemental Nutrition Assistance Program for Women, Infants and Children. To learn more about WIC, visit <https://www.nj.gov/health/fhs/wic/>.

## 2 Family Economic Security

### New Jersey's Office of the Food Security Advocate

In August 2022, the state announced the Office of the Food Security Advocate (OFSA) which oversees New Jersey's food security programs and more. The office focuses its work on four areas: supporting state agencies that address food insecurity, strengthening policies that combat hunger, collaborating with the philanthropic sector, and supporting and participating in community-driven food-assistance security work. To connect with OFSA, visit <https://www.nj.gov/foodsecurity/>.

### How is School Breakfast and Lunch Participation Changing in New Jersey?

In the beginning of 2024, Governor Murphy signed legislation that requires public and nonpublic schools participating in the National School Lunch program and/or the Federal School Breakfast program to provide free school lunch/breakfast to students whose families have an annual income of up to 224% of the federal poverty level. Based on 2024 Federal Poverty thresholds, this would be no more than \$71,259 per year for a family of four (2 adults and 2 children). This change has been enacted for the 2024-2025 school year and is part of the Working Class Families Anti-Hunger Act. This is the second time in the past three years the state has expanded eligibility by raising the income level so that more students can receive free school meals. The first time was in 2022, when the eligibility went from 185% of the federal poverty level to 199%. Due to the differing eligibility levels, it is advised not to compare the data presented from year to year.

## 2 Family Economic Security

### Estimated Food Insecure Child Population

	2020		2021		2022	
	#	Rate	#	Rate	#	Rate
Atlantic	13,680	24.3%	8,800	15.1%	10,010	17.4%
Bergen	14,940	7.6%	7,370	3.6%	13,960	7.0%
Burlington	9,060	9.7%	6,410	6.7%	10,550	11.1%
Camden	19,100	16.6%	14,720	12.3%	20,110	17.0%
Cape May	2,780	17.1%	1,870	11.1%	2,500	15.0%
Cumberland	7,380	20.5%	6,020	16.0%	7,610	20.8%
Essex	41,980	22.1%	34,710	17.0%	43,110	21.4%
Gloucester	5,910	9.3%	3,900	5.9%	6,390	9.9%
Hudson	24,940	18.2%	19,000	13.0%	24,690	17.2%
Hunterdon	450	1.9%	N/A	0.0%	800	3.3%
Mercer	9,380	11.9%	7,360	8.9%	10,930	13.3%
Middlesex	18,360	10.2%	12,210	6.5%	19,030	10.3%
Monmouth	9,170	7.0%	4,590	3.4%	8,790	6.6%
Morris	4,160	4.0%	1,380	1.3%	4,770	4.5%
Ocean	17,260	11.9%	13,010	8.4%	20,030	12.8%
Passaic	22,770	19.0%	16,470	13.2%	19,970	16.2%
Salem	2,380	17.6%	2,010	14.3%	2,700	19.3%
Somerset	3,340	4.6%	1,530	2.0%	4,030	5.5%
Sussex	2,040	7.3%	990	3.5%	2,010	7.1%
Union	17,500	13.4%	12,090	8.9%	17,430	13.0%
Warren	1,890	9.1%	1,240	5.8%	2,150	10.1%
<b>New Jersey</b>	<b>175,830</b>	<b>9.0%</b>	<b>197,280</b>	<b>9.8%</b>	<b>263,260</b>	<b>13.2%</b>

*Note: These are estimated numbers of food insecure children based on other indicators such as poverty, median income, etc., so county numbers may not add up to the state total.*



## 2 Family Economic Security

### Children Receiving Free or Reduced-Price School Breakfast

	2022			2023			2024		
	ADP Reduced	ADP Free	Total	ADP Reduced	ADP Free	Total	ADP Reduced	ADP Free	Total
Atlantic	1,008	8,482	9,490	1,191	8,567	9,758	1,192	9,779	10,971
Bergen	935	4,372	5,307	1,046	5,417	6,463	1,011	7,777	8,788
Burlington	974	3,663	4,637	1,093	4,351	5,444	1,000	5,609	6,609
Camden	1,228	14,873	16,101	1,211	16,801	18,012	1,103	18,236	19,339
Cape May	182	1,517	1,699	207	1,541	1,748	174	1,765	1,939
Cumberland	749	9,807	10,556	812	10,380	11,192	671	9,953	10,624
Essex	2,419	28,995	31,414	2,700	34,667	37,367	2,431	36,624	39,055
Gloucester	465	3,442	3,907	582	3,410	3,992	480	4,246	4,726
Hudson	1,946	21,763	23,709	2,201	23,412	25,613	1,685	24,803	26,488
Hunterdon	21	159	180	45	218	263	83	473	556
Mercer	445	7,107	7,552	632	8,490	9,122	540	9,658	10,198
Middlesex	2,022	13,820	15,842	2,429	16,577	19,006	2,403	16,766	19,169
Monmouth	643	4,968	5,611	722	5,632	6,354	607	6,167	6,774
Morris	474	1,787	2,261	484	2,333	2,817	424	2,977	3,401
Ocean	944	6,405	7,349	1,005	6,473	7,478	1,043	7,789	8,832
Passaic	379	23,897	24,276	362	25,282	25,644	418	24,052	24,470
Salem	184	1,882	2,066	168	2,109	2,277	182	2,376	2,558
Somerset	577	2,736	3,313	610	3,157	3,767	595	3,882	4,477
Sussex	108	558	666	197	688	885	262	872	1,134
Union	2,071	12,744	14,815	2,381	14,879	17,260	1,891	16,484	18,375
Warren	180	1,120	1,300	211	1,396	1,607	177	1,615	1,792
<b>New Jersey</b>	<b>17,954</b>	<b>174,097</b>	<b>192,051</b>	<b>20,289</b>	<b>195,780</b>	<b>216,069</b>	<b>18,372</b>	<b>211,903</b>	<b>230,275</b>

Note: Data are as of October of each year. ADP stands for Average Daily Participation.

## 2 Family Economic Security

### Children Receiving Free or Reduced-Price School Lunch

	2022			2023			2024		
	ADP Reduced	ADP Free	Total	ADP Reduced	ADP Free	Total	ADP Reduced	ADP Free	Total
Atlantic	2,026	12,834	14,860	2,203	13,001	15,204	2,031	14,595	16,626
Bergen	3,758	13,345	17,103	3,934	15,221	19,155	3,453	19,345	22,798
Burlington	2,628	9,079	11,707	2,674	9,894	12,568	2,438	12,461	14,899
Camden	2,573	24,976	27,549	2,447	26,302	28,749	2,271	29,239	31,510
Cape May	311	2,464	2,775	377	2,615	2,992	307	2,877	3,184
Cumberland	1,249	13,180	14,429	1,342	13,814	15,156	1,104	14,146	15,250
Essex	3,874	40,242	44,116	4,167	47,336	51,503	3,511	50,986	54,497
Gloucester	1,212	6,497	7,709	1,385	6,901	8,286	1,138	8,352	9,490
Hudson	3,513	30,410	33,923	3,757	32,888	36,645	2,958	35,171	38,129
Hunterdon	177	950	1,127	259	1,055	1,314	259	1,470	1,729
Mercer	1,713	13,662	15,375	1,860	15,384	17,244	1,671	17,388	19,059
Middlesex	5,045	26,585	31,630	5,408	29,321	34,729	5,235	31,858	37,093
Monmouth	2,104	12,123	14,227	2,174	12,840	15,014	1,867	14,882	16,188
Morris	1,547	5,109	6,656	1,511	5,477	6,988	1,248	7,493	8,741
Ocean	2,178	12,007	14,185	2,332	12,087	14,419	2,272	14,948	17,220
Passaic	1,876	36,124	38,000	1,720	38,011	39,731	1,609	36,827	38,436
Salem	372	2,999	3,371	363	3,293	3,656	389	3,604	3,993
Somerset	1,552	5,862	7,414	1,599	6,905	8,504	1,437	8,323	9,760
Sussex	404	1,347	1,751	566	1,645	2,211	630	2,120	2,750
Union	4,872	26,486	31,358	5,004	28,438	33,442	4,165	31,667	35,832
Warren	462	2,482	2,944	545	2,776	3,321	458	3,494	3,952
<b>New Jersey</b>	<b>43,446</b>	<b>298,763</b>	<b>342,209</b>	<b>45,627</b>	<b>325,204</b>	<b>370,831</b>	<b>40,451</b>	<b>361,246</b>	<b>401,697</b>

Note: Data are as of October of each year. ADP stands for Average Daily Participation.

## 2 Family Economic Security

### Free and Reduced-Price Student Participation in Breakfast per 100 Participating in Lunch

	2022	2023	2024
Atlantic	64%	64%	66%
Bergen	31%	34%	39%
Burlington	40%	43%	44%
Camden	58%	63%	61%
Cape May	61%	58%	61%
Cumberland	73%	74%	70%
Essex	71%	73%	72%
Gloucester	51%	48%	50%
Hudson	70%	70%	69%
Hunterdon	16%	20%	32%
Mercer	49%	53%	54%
Middlesex	50%	55%	52%
Monmouth	39%	42%	40%
Morris	34%	40%	39%
Ocean	52%	52%	51%
Passaic	64%	65%	64%
Salem	61%	62%	64%
Somerset	45%	44%	46%
Sussex	38%	40%	41%
Union	47%	52%	51%
Warren	44%	48%	45%
<b>New Jersey</b>	<b>56%</b>	<b>58%</b>	<b>57%</b>

Note: Data are as of October of each year.

# 3 Child Health

## Total Births

	2021	2022	% Change
Atlantic	2,737	2,707	-1%
Bergen	9,120	9,310	2%
Burlington	4,634	4,725	2%
Camden	6,230	6,115	-2%
Cape May	726	755	4%
Cumberland	1,763	1,832	4%
Essex	9,720	10,134	4%
Gloucester	3,035	3,050	0%
Hudson	9,116	9,042	-1%
Hunterdon	1,048	1,112	6%
Mercer	4,090	4,193	3%
Middlesex	8,722	8,576	-2%
Monmouth	6,124	6,439	5%
Morris	4,925	5,125	4%
Ocean	10,211	10,210	0%
Passaic	6,249	6,414	3%
Salem	715	731	2%
Somerset	3,166	3,269	3%
Sussex	1,366	1,444	6%
Union	6,594	6,710	2%
Warren	1,039	985	-5%
<b>New Jersey</b>	<b>101,330</b>	<b>102,890</b>	<b>2%</b>

Note: 2022 county totals may not add up to the state total due to some births where the county of residence was unknown.

### 3 Child Health

#### Births to Foreign-Born Mothers

	2021		2022		% Change
	#	%	#	%	
Atlantic	683	25%	683	25%	0%
Bergen	4,190	46%	3,937	42%	-6%
Burlington	992	21%	950	20%	-4%
Camden	1,546	25%	1,224	20%	-21%
Cape May	103	14%	88	12%	-15%
Cumberland	436	25%	499	27%	14%
Essex	4,391	45%	4,798	47%	9%
Gloucester	523	17%	298	10%	-43%
Hudson	5,792	64%	4,973	55%	-14%
Hunterdon	243	23%	210	19%	-14%
Mercer	1,912	47%	2,051	49%	7%
Middlesex	4,740	54%	4,476	52%	-6%
Monmouth	1,506	25%	1,377	21%	-9%
Morris	1,577	32%	1,559	30%	-1%
Ocean	1,583	16%	1,637	16%	3%
Passaic	2,898	46%	3,124	49%	8%
Salem	163	23%	69	9%	-58%
Somerset	1,372	43%	1,357	42%	-1%
Sussex	161	12%	187	13%	16%
Union	3,328	50%	3,251	48%	-2%
Warren	413	40%	188	19%	-54%
<b>New Jersey</b>	<b>38,552</b>	<b>38%</b>	<b>36,936</b>	<b>36%</b>	<b>-4%</b>

# 3 Child Health

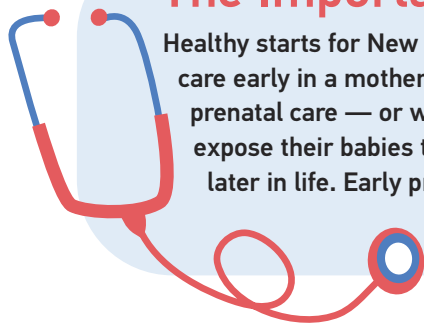
## Births by Parity (Previous Births)

	2022			
	None	One	Two	Three or More
Atlantic	40%	31%	17%	12%
Bergen	43%	36%	15%	6%
Burlington	42%	35%	15%	8%
Camden	39%	33%	16%	11%
Cape May	42%	31%	18%	10%
Cumberland	35%	31%	19%	14%
Essex	38%	35%	17%	10%
Gloucester	40%	34%	16%	10%
Hudson	51%	31%	12%	7%
Hunterdon	42%	37%	14%	7%
Mercer	40%	32%	18%	10%
Middlesex	42%	37%	14%	7%
Monmouth	41%	35%	16%	8%
Morris	45%	38%	13%	5%
Ocean	29%	23%	15%	32%
Passaic	39%	32%	17%	13%
Salem	39%	28%	17%	16%
Somerset	43%	37%	14%	6%
Sussex	43%	34%	15%	8%
Union	38%	36%	17%	9%
Warren	39%	35%	17%	9%
<b>New Jersey</b>	<b>40%</b>	<b>33%</b>	<b>15%</b>	<b>11%</b>

Note: According to the New Jersey Department of Health, parity is the number of previous live-born children a woman has delivered.

### The Importance of Prenatal Care

Healthy starts for New Jersey's infants begin with quality prenatal care early in a mother's pregnancy. Women who receive late prenatal care — or who do not receive prenatal care at all — expose their babies to a greater chance of health problems later in life. Early prenatal care refers to care that begins in the first trimester of the mother's pregnancy.



### What is a Preterm Birth?

A preterm birth is a birth that occurs **before 37 weeks** of gestation.

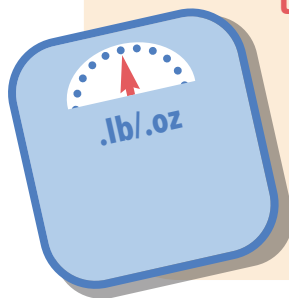
Most pregnancies are around 40 weeks. Preterm, sometimes called premature, births can have many lifelong risks such as chronic illnesses and developmental disabilities.



### What is a Low Birthweight Baby?

A low birthweight baby is any infant born weighing **less than 2,500 grams,**

**or roughly 5.5 pounds.** Low birthweight babies may be more likely to develop certain health problems, such as respiratory distress syndrome, than infants born with normal birthweights. In the long term, they may also be at greater risk of developing chronic conditions such as diabetes.



### 3 Child Health

#### Expecting Women Receiving Early Prenatal Care

	2021		2022		% Change
	#	%	#	%	
Atlantic	2,028	74%	2,022	75%	0%
Bergen	7,476	82%	7,513	81%	0%
Burlington	3,726	80%	3,846	81%	3%
Camden	4,666	75%	4,737	78%	2%
Cape May	553	**	561	**	1%
Cumberland	1,235	70%	1,222	67%	-1%
Essex	6,296	65%	6,073	60%	-4%
Gloucester	2,483	82%	2,554	84%	3%
Hudson	6,752	74%	6,351	70%	-6%
Hunterdon	910	87%	980	88%	8%
Mercer	2,695	66%	2,439	58%	-9%
Middlesex	6,579	75%	6,231	73%	-5%
Monmouth	4,941	81%	5,128	80%	4%
Morris	4,069	83%	4,067	79%	0%
Ocean	7,572	74%	7,610	75%	1%
Passaic	4,186	67%	3,884	61%	-7%
Salem	538	**	526	**	-2%
Somerset	2,505	79%	2,470	76%	-1%
Sussex	1,160	85%	1,178	82%	2%
Union	4,614	70%	4,382	65%	-5%
Warren	869	84%	794	81%	-9%
<b>New Jersey</b>	<b>75,853</b>	<b>75%</b>	<b>74,568</b>	<b>73%</b>	<b>-2%</b>

Note: \*\* indicates data are suppressed due to high margins of error.



# 3 Child Health

## Preterm Births

	2021		2022		% Change
	#	%	#	%	
Atlantic	272	9.9%	261	9.6%	-4%
Bergen	903	9.9%	860	9.2%	-5%
Burlington	429	9.3%	411	8.7%	-4%
Camden	633	10.2%	642	10.5%	1%
Cape May	53	7.3%	84	11.1%	58%
Cumberland	212	12.0%	201	11.0%	-5%
Essex	1,011	10.4%	1,036	10.2%	2%
Gloucester	283	9.3%	304	10.0%	7%
Hudson	849	9.3%	888	9.8%	5%
Hunterdon	80	7.6%	90	8.1%	13%
Mercer	382	9.3%	397	9.5%	4%
Middlesex	772	8.9%	778	9.1%	1%
Monmouth	483	7.9%	576	8.9%	19%
Morris	381	7.7%	370	7.2%	-3%
Ocean	727	7.1%	742	7.3%	2%
Passaic	693	11.1%	749	11.7%	8%
Salem	69	9.7%	72	9.8%	4%
Somerset	257	8.1%	271	8.3%	5%
Sussex	106	7.8%	137	9.5%	29%
Union	589	8.9%	578	8.6%	-2%
Warren	108	10.4%	95	9.6%	-12%
<b>New Jersey</b>	<b>9,292</b>	<b>9.2%</b>	<b>9,542</b>	<b>9.3%</b>	<b>3%</b>

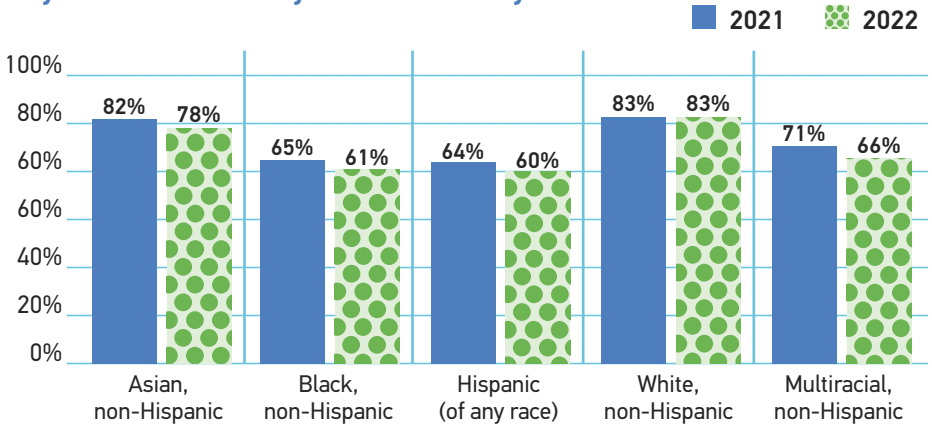
### 3 Child Health

#### Babies Born with Low Birthweights

	2021		2022		% Change
	#	%	#	%	
Atlantic	235	8.6%	251	9.3%	7%
Bergen	689	7.6%	675	7.3%	-2%
Burlington	351	7.6%	360	7.6%	3%
Camden	554	8.9%	546	8.9%	-1%
Cape May	41	5.6%	71	9.4%	73%
Cumberland	163	9.2%	175	9.6%	7%
Essex	914	9.4%	894	8.8%	-2%
Gloucester	230	7.6%	254	8.3%	10%
Hudson	774	8.5%	780	8.6%	1%
Hunterdon	67	6.4%	66	5.9%	-1%
Mercer	330	8.1%	350	8.3%	6%
Middlesex	723	8.3%	690	8.0%	-5%
Monmouth	367	6.0%	448	7.0%	22%
Morris	329	6.7%	281	5.5%	-15%
Ocean	604	5.9%	576	5.6%	-5%
Passaic	547	8.8%	607	9.5%	11%
Salem	63	8.8%	59	8.1%	-6%
Somerset	207	6.5%	269	8.2%	30%
Sussex	85	6.2%	98	6.8%	15%
Union	492	7.5%	470	7.0%	-4%
Warren	77	7.4%	78	7.9%	1%
<b>New Jersey</b>	<b>7,842</b>	<b>7.7%</b>	<b>7,999</b>	<b>7.8%</b>	<b>2%</b>

# 3 Child Health

## Percentage of Expecting Women Receiving Early Prenatal Care by Race/Ethnicity



## Percentage of Preterm Births by Race/Ethnicity

	Asian, non-Hispanic	Black, non-Hispanic	Hispanic (of any race)	White, non-Hispanic	Other Single Race, non-Hispanic	Multiracial, non-Hispanic
2021	8.3%	13.1%	10.0%	7.8%	9.8%	9.2%
2022	8.5%	13.3%	9.8%	7.9%	10.5%	8.8%

## Percentage of Babies Born with Low Birthweights by Race/Ethnicity

	Asian, non-Hispanic	Black, non-Hispanic	Hispanic (of any race)	White, non-Hispanic	Other Single Race, non-Hispanic	Multiracial, non-Hispanic
2021	9.1%	12.8%	7.8%	5.9%	9.0%	9.7%
2022	9.1%	12.9%	7.9%	5.9%	8.0%	9.2%

# 3 Child Health

## Infant Mortality

	2012–2016		2017–2021	
	#	Rate	#	Rate
Atlantic	110	7.2	91	6.5
Bergen	134	2.9	138	3.1
Burlington	119	5.3	100	4.5
Camden	235	7.6	199	6.6
Cape May	23	5.2	20	5.2
Cumberland	58	5.8	63	7.0
Essex	311	6.0	262	5.3
Gloucester	67	4.6	67	4.6
Hudson	172	3.4	135	2.8
Hunterdon	<10	**	17	**
Mercer	138	6.6	101	5.1
Middlesex	172	3.6	160	3.6
Monmouth	105	3.6	99	3.4
Morris	66	2.8	66	2.8
Ocean	124	3.0	134	2.9
Passaic	141	4.1	115	3.6
Salem	21	6.3	22	6.5
Somerset	66	3.9	56	3.6
Sussex	21	3.5	20	3.2
Union	151	4.5	135	4.1
Warren	34	7.3	21	4.4
<b>New Jersey</b>	<b>2,277</b>	<b>4.4</b>	<b>2,021</b>	<b>4.0</b>

Note: \*\* indicates that data are suppressed.

# 3 Child Health

## What is Infant Mortality?

Infant mortality is the number of babies who pass away before their first birthday. While the state's infant mortality rate is 4.0 out of every 1,000 live births, there are notable disparities when the data is broken down by race and ethnicity. In particular, Black, non-Hispanic babies have an infant mortality rate of 8.7 — which is more than two times that of New Jersey as a whole.

Nurture NJ, led by First Lady Tammy Murphy, recognizes this issue and other concerns related to infant and maternal health. The campaign aims to ensure all women are healthy and have access to care before pregnancy, build a better system of care for them during the pre- and postnatal processes, and ensure they have access to supportive communities where opportunities for health are always available. To learn more about Nurture NJ, visit <https://nj.gov/governor/admin/fl/nurturenj.shtml>.

ACNJ, along with other public and private sector leaders, is actively working to improve maternal and infant health outcomes. For more information, visit [www.acnj.org](http://www.acnj.org).

## New Jersey Infant Mortality by Race/Ethnicity

	2012–2016		2017–2021	
	#	Rate	#	Rate
Asian, nH	148	2.6	134	2.5
Black, nH	697	9.5	572	8.7
Hispanic, any race	584	4.2	554	4.0
Other race, nH	42	4.5	27	4.5
White, nH	626	2.7	561	2.5

*nH = non-Hispanic. Some races/ethnicities are omitted due to data suppression.*

## 3 Child Health

### New Jersey's State-Funded Evidence-Based Home Visitation Programs

Home visitation is defined as families receiving regularly scheduled visits by either a trained home visitor or a nurse. The state's home visitation programs are designed to help mothers and fathers build healthy environments for their infants and young children by promoting infant and child health, nurturing positive parent-child relationships, and linking parents to resources and support. These program models are "evidence-based," meaning research has shown that they are effective in helping families. Intensive home visiting services are available in all 21 counties for families facing poverty and other risk factors, with visits starting before or immediately after birth.

In July 2021, Governor Murphy signed into law S-690 to create a state-wide, universal home visiting (UHV) program for newborns in the state of New Jersey. This will be only the second such program in the United States through which families with a newborn can have a specially trained nurse visit their home in the first few weeks after the child's birth. The services are free, voluntary, and meant for families of all backgrounds and incomes. During home visits, nurses will check the physical and emotional health of the parents and baby, provide information helpful to families, and offer referrals to community resources. Beginning in January 2024, this program was rolled out in five counties: Essex, Cumberland, Gloucester, Mercer, and Middlesex. Additional counties will be added annually until the program is expanded to all 21 counties. Learn more at <https://www.familyconnectsnj.org/>.

Connecting NJ is a full-service network of partners and agencies dedicated to helping New Jersey families thrive and provides referrals to community resources, programs, and services such as home visiting programs. Learn more at <https://www.nj.gov/connectingnj/>.

### 3 Child Health

#### Families Receiving State-Funded Intensive Home Visitation Programs

	2021	2022	2023	2024	21–24 % Change
Atlantic	252	205	221	194	-23%
Bergen	186	197	186	185	-1%
Burlington	235	230	159	164	-30%
Camden	440	342	333	360	-18%
Cape May	261	236	209	203	-22%
Cumberland	194	175	153	168	-13%
Essex	590	491	381	510	-14%
Gloucester	323	337	289	318	-2%
Hudson	285	258	245	255	-11%
Hunterdon	29	23	20	19	-34%
Mercer	278	242	234	215	-23%
Middlesex	501	468	422	464	-7%
Monmouth	412	376	368	387	-6%
Morris	173	144	82	154	-11%
Ocean	181	159	118	159	-12%
Passaic	442	406	321	350	-21%
Salem	57	67	51	52	-9%
Somerset	29	22	27	34	17%
Sussex	214	170	204	181	-15%
Union	288	220	164	228	-21%
Warren	161	155	126	129	-20%
Unknown	3	2	1	1	-67%
<b>New Jersey</b>	<b>5,534</b>	<b>4,925</b>	<b>4,314</b>	<b>4,730</b>	<b>-15%</b>

Data are as of June 30 of each year.

### 3 Child Health

#### Number of Children Ages 6-26 Months Tested for Lead

	2020		2021		2022	
	#	% of Total Population 6-26 Months	#	% of Total Population 6-26 Months	#	% of Total Population 6-26 Months
Atlantic	1,847	28%	2,082	32%	2,258	35%
Bergen	7,105	36%	7,676	38%	7,081	35%
Burlington	3,313	33%	3,646	36%	4,065	40%
Camden	4,079	31%	4,443	34%	3,964	30%
Cape May	490	27%	547	30%	625	34%
Cumberland	1,385	32%	1,612	37%	1,443	33%
Essex	9,397	44%	9,644	45%	9,416	44%
Gloucester	1,432	21%	1,951	28%	1,738	25%
Hudson	7,325	42%	7,878	46%	6,692	39%
Hunterdon	993	43%	1,066	46%	1,240	54%
Mercer	3,164	37%	3,688	43%	3,990	46%
Middlesex	6,183	31%	7,567	38%	7,496	38%
Monmouth	3,342	25%	4,041	30%	4,242	32%
Morris	3,824	36%	4,642	43%	3,936	37%
Ocean	6,753	43%	8,288	53%	7,308	47%
Passaic	5,822	42%	6,223	45%	5,663	41%
Salem	377	24%	499	32%	529	34%
Somerset	2,607	34%	2,916	38%	2,977	39%
Sussex	687	22%	786	25%	818	26%
Union	6,275	44%	6,736	48%	6,638	47%
Warren	673	28%	803	34%	836	35%
Unknown Address	1,774	N/A	<10	N/A	508	N/A
<b>New Jersey</b>	<b>78,847</b>	<b>37%</b>	<b>86,737</b>	<b>40%</b>	<b>83,463</b>	<b>39%</b>

N/A indicates data are not available.



### 3 Child Health

#### Number of Children Under Age 6 Tested for Lead

	2020		2021		2022	
	#	% of Total Population < Age 6	#	% of Total Population < Age 6	#	% of Total Population < Age 6
Atlantic	3,100	16%	3,679	18%	4,039	20%
Bergen	11,728	19%	13,461	22%	12,013	20%
Burlington	4,523	14%	4,710	15%	5,235	17%
Camden	5,640	14%	5,954	15%	5,460	14%
Cape May	679	13%	742	14%	836	15%
Cumberland	2,713	21%	3,071	24%	2,668	21%
Essex	21,759	34%	22,832	35%	22,978	36%
Gloucester	2,046	10%	2,703	13%	2,463	12%
Hudson	14,809	30%	16,219	33%	14,190	29%
Hunterdon	1,111	15%	1,227	16%	1,488	20%
Mercer	5,390	21%	6,288	24%	6,649	26%
Middlesex	11,606	19%	14,379	24%	14,492	24%
Monmouth	5,225	12%	6,382	15%	6,883	16%
Morris	5,401	16%	6,716	20%	5,834	17%
Ocean	10,485	22%	13,065	28%	11,350	24%
Passaic	12,139	29%	13,447	33%	12,520	30%
Salem	565	12%	745	16%	771	17%
Somerset	3,729	16%	4,292	18%	4,374	19%
Sussex	957	10%	1,185	12%	1,158	12%
Union	12,118	28%	13,339	31%	13,180	31%
Warren	850	11%	1,040	14%	1,093	15%
Unknown Address	3,023	N/A	<10	N/A	1,131	N/A
<b>New Jersey</b>	<b>139,596</b>	<b>21%</b>	<b>155,481</b>	<b>24%</b>	<b>150,805</b>	<b>23%</b>

N/A indicates data are not available.

## 3 Child Health

### What is NJ FamilyCare?

NJ FamilyCare is New Jersey's publicly funded health insurance program, supported by federal Medicaid and Children's Health Insurance Program (CHIP) dollars as well as state funding, for children in families with a household income up to 355% of the federal poverty level. As of July 1, 2021, premiums are no longer required for NJ FamilyCare coverage. Qualified state residents of any age may be eligible for free or low-cost health insurance, which covers doctor visits, prescriptions, vision, dental care, mental health and substance use services, and hospitalization. For more information, visit <https://www.njfamilycare.org>.

As of January 1, 2023, children under 19 can apply for NJ FamilyCare regardless of their immigration status. All other requirements for NJ FamilyCare still apply. Visit [nj.gov/CoverAllKids](https://nj.gov/CoverAllKids) to learn more. Multilingual support is available.

During the nationwide public health emergency in response to the COVID-19 pandemic, all NJ FamilyCare/Medicaid recipients were able to maintain health insurance coverage without going through the traditional annual redetermination of eligibility. The redetermination process for eligibility began again on April 1, 2023. This means that the eligibility of all members enrolled in an NJ FamilyCare program is reviewed annually to see if they still qualify for coverage. It's important they keep their most current address and contact information on file in order to receive healthcare coverage-related correspondence. Families can confirm or update their contact information by calling NJ FamilyCare at 1-800-701-0710.

### 3 Child Health

#### NJ FamilyCare/Medicaid Recipients Under Age 19

	2022	2023	2024	22-24 % Change
Atlantic	34,929	36,152	32,339	-7%
Bergen	55,060	58,041	52,448	-5%
Burlington	31,477	33,679	30,862	-2%
Camden	65,129	67,899	59,820	-8%
Cape May	8,166	8,317	7,266	-11%
Cumberland	26,917	28,137	26,096	-3%
Essex	109,177	115,989	106,953	-2%
Gloucester	22,553	23,566	21,404	-5%
Hudson	82,245	86,164	78,403	-5%
Hunterdon	4,445	4,725	4,403	-1%
Mercer	39,296	42,729	41,183	5%
Middlesex	72,086	76,220	69,528	-4%
Monmouth	39,740	41,588	37,959	-4%
Morris	20,185	22,066	20,622	2%
Ocean	93,105	99,096	97,351	5%
Passaic	79,100	81,882	72,837	-8%
Salem	7,577	7,842	7,118	-6%
Somerset	17,524	18,821	17,544	0%
Sussex	6,928	7,341	6,573	-5%
Union	61,526	65,572	61,079	-1%
Warren	7,733	8,200	7,451	-4%
<b>New Jersey</b>	<b>885,881</b>	<b>934,905</b>	<b>859,972</b>	<b>-3%</b>

## 3 Child Health

### Why is Pediatric Oral Care Important?

Oral care is important for people of all ages, but especially for children. The American Academy of Pediatric Dentists recommends that children should visit the dentist by their first birthday. Oral health is sometimes pushed aside compared to other areas of children's health. However, it is important to note that good overall health cannot be achieved without good oral health. Visit [www.nj.gov/humanservices/dmahs/clients/periodicity\\_of\\_dental\\_services.pdf](http://www.nj.gov/humanservices/dmahs/clients/periodicity_of_dental_services.pdf) to better understand when dental services should be scheduled.

Unfortunately, less than 1% of children are visiting the dentist by age 1 according to the New Jersey Health Care Quality Institute (NJHCQI). In 2023, New Jersey Department of Health found that 36% of all 3rd graders in New Jersey had an untreated dental disease compared to United States' average of 20%. For some helpful oral health and hygiene tips to keep your child's smile healthy, visit [www.nj.gov/humanservices/dmahs/clients/healthy\\_smile\\_flyer.pdf](http://www.nj.gov/humanservices/dmahs/clients/healthy_smile_flyer.pdf).

The table presented shows the results from a secret shopper survey conducted by the NJHCQI to determine how many of the dental practices serving 0- to 6-year-olds in the Medicaid Managed Care Organization (MCO) provider directories offer appointments, and how much of the information listed is accurate. The study found that of the 824 practices found in the 0-6 years old MCO directories, more than half of them did not accommodate appointments for 2-year-olds, and 63% provided accurate insurance information.

### 3 Child Health

## Number of Dental Practices Listed in Ages 0-6 MCO\* Directories

2024

	Number of Dental Practices Listed in 0-6 MCO* Directories, 2024	% of the 0-6 Directory Listings with Accurate Information that Practice Provides Dental Care for 2-year-olds	% of 0-6 Directory Listing with Accurate Insurance Network Information
Atlantic	26	38%	58%
Bergen	68	53%	54%
Burlington	29	38%	52%
Camden	56	39%	61%
Cape May	6	50%	88%
Cumberland	19	63%	84%
Essex	97	56%	64%
Gloucester	17	53%	82%
Hudson	84	48%	54%
Hunterdon	7	43%	86%
Mercer	34	56%	71%
Middlesex	86	15%	59%
Monmouth	71	55%	65%
Morris	33	45%	70%
Ocean	41	34%	66%
Passaic	53	47%	66%
Salem	8	25%	38%
Somerset	25	40%	56%
Sussex	4	75%	50%
Union	53	70%	79%
Warren	7	43%	57%
New Jersey	824	49%	63%

\*MCO stands for Medicaid Managed Care Organization. With managed care, beneficiaries enroll in a health plan or MCO that coordinates members' health and offers special services as well as usual NJ FamilyCare Medicaid benefits. For more information, visit <https://www.nj.gov/humanservices/dmahs/info/resources/care/>.

# 3 Child Health

## Children Under Age 19 Without Health Insurance

	2014–2018		2019–2023		% Change
	#	%	#	%	
Atlantic	3,263	5%	2,096	3%	-36%
Bergen	10,074	5%	6,865	3%	-32%
Burlington	2,330	2%	2,769	3%	19%
Camden	3,702	3%	4,351	3%	18%
Cape May	645	4%	456	3%	-29%
Cumberland	1,928	5%	1,475	4%	-23%
Essex	11,329	6%	13,167	6%	16%
Gloucester	1,673	2%	1,339	2%	-20%
Hudson	8,108	6%	7,655	5%	-6%
Hunterdon	544	2%	484	2%	-11%
Mercer	2,895	3%	4,224	5%	46%
Middlesex	6,386	3%	8,566	4%	34%
Monmouth	4,458	3%	5,442	4%	22%
Morris	2,669	2%	3,649	3%	37%
Ocean	5,071	3%	3,074	2%	-39%
Passaic	6,712	5%	7,268	6%	8%
Salem	406	3%	197	1%	-51%
Somerset	2,190	3%	3,102	4%	42%
Sussex	604	2%	962	3%	59%
Union	7,404	5%	9,978	7%	35%
Warren	781	3%	672	3%	-14%
<b>New Jersey</b>	<b>83,172</b>	<b>4%</b>	<b>87,791</b>	<b>4%</b>	<b>6%</b>

# 4 Child Protection

## What is CP&P?

The Division of Child Protection and Permanency (CP&P), formerly the Division of Youth and Family Services (DYFS), operates within the New Jersey Department of Children and Families (DCF) as the state's child welfare and protection agency. CP&P is responsible for investigating reports of child abuse and neglect and, if necessary, arranging for the child's protection and services for the family. When children cannot remain at home due to safety concerns, CP&P may ask the family court to place the child into foster care and to seek another permanent home for children who cannot be safely reunited with their parent(s) within the timeframes provided by law.

On April 25, 2023, U.S. District Judge Stanley R. Chesler signed a court order to end federal oversight of New Jersey's child welfare system. The federal court monitor acknowledged many of the state's accomplishments, highlighting the significant decline in the number of children living in foster care. The Staffing and Outcomes Review Subcommittee of the New Jersey Task Force on Child Abuse and Neglect assumed responsibility to conduct an annual performance review of CP&P. Visit [www.acnj.org](http://www.acnj.org) and <https://www.nj.gov/dcf/providers/boards/njtfcant/> for updates.

## The New Jersey Youth Resource Spot

The New Jersey Youth Resource Spot (<https://www.njyrs.org/>) is a website created by members of the DCF Youth Council, specially geared for young people in New Jersey who have been involved with DCF and those who work with them.

## What is New Jersey's Child Fatality and Near Fatality Review Board?

The New Jersey Child Fatality and Near Fatality Review Board (CFNFRB) consists of six different teams, each with their own sets of responsibilities and areas of focus. Team members come from a variety of backgrounds, including law enforcement, medicine, education, and the non-profit sector. The board conducts in-depth reviews of select child death cases, such as when the cause of death may be a result of abuse or neglect or if the cause is undetermined. For more information on the CFNFRB and to review their annual reports, visit <https://www.nj.gov/dcf/providers/boards/fatality/>.

# 4 Child Protection

## Number of Children Reported for Abuse/Neglect

	2022	2023	2024
Atlantic	4,106	4,670	4,435
Bergen	5,400	5,977	5,586
Burlington	5,228	5,507	4,953
Camden	8,171	8,543	8,295
Cape May	1,289	1,192	1,198
Cumberland	3,325	3,521	3,492
Essex	9,587	10,298	9,842
Gloucester	3,634	4,354	3,944
Hudson	5,923	6,528	6,459
Hunterdon	736	799	846
Mercer	4,028	4,676	4,695
Middlesex	6,794	7,230	7,150
Monmouth	5,175	5,424	5,394
Morris	3,323	3,530	3,489
Ocean	6,366	6,923	6,372
Passaic	6,115	6,809	6,327
Salem	1,214	1,201	1,176
Somerset	2,246	2,510	2,476
Sussex	1,579	1,711	1,615
Union	5,084	5,598	5,323
Warren	1,627	1,654	1,734
<b>New Jersey</b>	<b>90,950</b>	<b>98,655</b>	<b>94,801</b>

## Number of Children Under Child Protection and Permanency Supervision

	2022	2023	2024
Atlantic	1,426	1,467	1,241
Bergen	1,447	1,507	1,451
Burlington	1,368	1,541	1,622
Camden	3,042	2,935	3,134
Cape May	463	460	405
Cumberland	1,111	1,167	1,145
Essex	2,839	3,035	3,151
Gloucester	1,187	1,149	1,101
Hudson	2,148	2,243	2,092
Hunterdon	229	226	267
Mercer	1,249	1,426	1,297
Middlesex	2,285	2,472	2,208
Monmouth	1,435	1,413	1,297
Morris	841	868	889
Ocean	1,603	1,649	1,564
Passaic	1,922	2,040	1,971
Salem	429	380	407
Somerset	708	658	702
Sussex	346	375	308
Union	1,618	1,783	1,604
Warren	604	553	544
Other	2,696	3,060	2,803
<b>New Jersey</b>	<b>30,996</b>	<b>32,407</b>	<b>31,203</b>



# 4 Child Protection

## Children with Substantiated/Established Cases of Abuse/Neglect

2024

	Substantiated		Established		Total Substantiated/ Established		Total Children Reported for Abuse/Neglect
	#	%	#	%	#	%	#
Atlantic	63	1%	47	1%	110	2%	4,435
Bergen	37	1%	61	1%	98	2%	5,586
Burlington	54	1%	52	1%	106	2%	4,953
Camden	142	2%	146	2%	288	3%	8,295
Cape May	30	3%	19	2%	49	4%	1,198
Cumberland	85	2%	37	1%	122	3%	3,492
Essex	100	1%	110	1%	210	2%	9,842
Gloucester	47	1%	22	1%	69	2%	3,944
Hudson	76	1%	61	1%	137	2%	6,459
Hunterdon	<10*	N/A	<10*	N/A	<10*	N/A	846
Mercer	34	1%	54	1%	88	2%	4,695
Middlesex	72	1%	53	1%	125	2%	7,150
Monmouth	55	1%	65	1%	120	2%	5,394
Morris	42	1%	55	2%	97	3%	3,489
Ocean	62	1%	98	2%	160	3%	6,372
Passaic	47	1%	46	1%	93	1%	6,327
Salem	28	2%	20	2%	48	4%	1,176
Somerset	14	1%	16	1%	30	1%	2,476
Sussex	32	2%	25	2%	57	4%	1,615
Union	44	1%	50	1%	94	2%	5,323
Warren	13	1%	13	1%	26	1%	1,734
<b>New Jersey</b>	<b>1,081</b>	<b>1%</b>	<b>1,055</b>	<b>1%</b>	<b>2,136</b>	<b>2%</b>	<b>94,801</b>

For suppressed data displayed in the table, these values are displayed as "<10\*". Due to data being suppressed, percentages could not be calculated for some counties resulting in N/A.

# 4 Child Protection

## Number of Children Receiving In-Home CP&P Supervision

	2022	2023	2024
Atlantic	1,236	1,303	1,090
Bergen	1,360	1,425	1,360
Burlington	1,238	1,339	1,397
Camden	2,669	2,507	2,724
Cape May	372	397	349
Cumberland	1,030	1,068	1,034
Essex	2,461	2,678	2,755
Gloucester	1,012	988	963
Hudson	1,972	2,076	1,947
Hunterdon	216	218	258
Mercer	1,031	1,223	1,107
Middlesex	2,091	2,318	2,086
Monmouth	1,285	1,251	1,099
Morris	786	810	833
Ocean	1,445	1,474	1,409
Passaic	1,753	1,874	1,763
Salem	371	340	367
Somerset	669	628	668
Sussex	324	348	285
Union	1,464	1,632	1,475
Warren	574	518	499
Other	2,691	3,053	2,798
<b>New Jersey</b>	<b>28,050</b>	<b>29,468</b>	<b>28,266</b>

## Number of Children in Out-of-Home Placements

	2022	2023	2024
Atlantic	190	164	151
Bergen	87	82	91
Burlington	130	202	225
Camden	373	428	410
Cape May	91	63	56
Cumberland	81	99	111
Essex	378	357	396
Gloucester	175	161	138
Hudson	176	167	145
Hunterdon	13	<10*	<10*
Mercer	218	203	190
Middlesex	194	154	122
Monmouth	150	162	198
Morris	55	58	56
Ocean	158	175	155
Passaic	169	166	208
Salem	58	40	40
Somerset	39	30	34
Sussex	22	27	23
Union	154	151	129
Warren	30	35	45
Other	<10*	<10*	<10*
<b>New Jersey</b>	<b>2,946</b>	<b>2,939</b>	<b>2,937</b>

*Note: For suppressed data displayed in the table, these values are displayed as "<10\*". County totals may not meet state totals due to some cases where county of residence was listed as Other.*

# 4 Child Protection

## Number of Children Receiving In-Home CP&P Supervision by Race/Ethnicity

2024

	Black or African American		Hispanic		White		Another Race		Missing or Undetermined	
	#	%	#	%	#	%	#	%	#	%
Atlantic	390	36%	344	32%	259	24%	37	3%	60	6%
Bergen	213	16%	619	46%	336	25%	115	8%	77	6%
Burlington	514	37%	226	16%	513	37%	64	5%	80	6%
Camden	1,009	37%	854	31%	655	24%	95	3%	111	4%
Cape May	34	10%	71	20%	204	58%	31	9%	<10*	N/A
Cumberland	336	32%	388	38%	226	22%	24	2%	60	6%
Essex	1,624	59%	873	32%	126	5%	43	2%	89	3%
Gloucester	273	28%	174	18%	427	44%	45	5%	44	5%
Hudson	538	28%	1,082	56%	178	9%	51	3%	98	5%
Hunterdon	39	15%	60	23%	132	51%	15	6%	12	5%
Mercer	496	45%	401	36%	113	10%	38	3%	59	5%
Middlesex	481	23%	1,007	48%	349	17%	134	6%	115	6%
Monmouth	262	24%	354	32%	407	37%	40	4%	36	3%
Morris	81	10%	326	39%	315	38%	67	8%	44	5%
Ocean	171	12%	452	32%	660	47%	57	4%	69	5%
Passaic	356	20%	1,085	62%	227	13%	34	2%	61	3%
Salem	111	30%	64	17%	155	42%	19	5%	18	5%
Somerset	169	25%	257	38%	118	18%	60	9%	64	10%
Sussex	13	5%	81	28%	170	60%	12	4%	<10*	N/A
Union	507	34%	762	52%	116	8%	18	1%	72	5%
Warren	75	15%	92	18%	286	57%	21	4%	25	5%
Other	993	35%	720	26%	723	26%	142	5%	220	8%
<b>New Jersey</b>	<b>8,685</b>	<b>31%</b>	<b>10,292</b>	<b>36%</b>	<b>6,695</b>	<b>24%</b>	<b>1,162</b>	<b>4%</b>	<b>1,432</b>	<b>5%</b>

For suppressed data displayed in the table, these values are displayed as "<10\*\*".

Due to data being suppressed, percentages could not be calculated for some counties resulting in N/A.

County totals may not meet state totals due to some cases where county of residence was listed as Other.

# 4 Child Protection

## Number of Children in Out-of-Home Placements by Race/Ethnicity

	2024							
	Black or African American		Hispanic		White		Another Race	
	#	%	#	%	#	%	#	%
Atlantic	53	35%	37	25%	45	30%	16	11%
Bergen	29	32%	21	23%	32	35%	<10*	N/A
Burlington	96	43%	45	20%	59	26%	24	11%
Camden	188	46%	106	26%	85	21%	28	7%
Cape May	<10*	N/A	<10*	N/A	37	66%	<10*	N/A
Cumberland	33	30%	44	40%	21	19%	12	11%
Essex	304	77%	72	18%	16	4%	<10*	N/A
Gloucester	47	34%	25	18%	53	38%	11	8%
Hudson	40	28%	80	55%	20	14%	<10*	N/A
Hunterdon	<10*	N/A	<10*	N/A	<10*	N/A	-	N/A
Mercer	111	58%	28	15%	41	22%	10	5%
Middlesex	38	31%	46	38%	31	25%	<10*	N/A
Monmouth	74	37%	42	21%	72	36%	<10*	N/A
Morris	12	21%	18	32%	22	39%	<10*	N/A
Ocean	24	15%	27	17%	93	60%	11	7%
Passaic	80	38%	89	43%	25	12%	12	6%
Salem	17	43%	<10*	N/A	13	33%	<10*	N/A
Somerset	19	56%	<10*	N/A	<10*	N/A	<10*	N/A
Sussex	<10*	N/A	<10*	N/A	14	61%	<10*	N/A
Union	66	51%	40	31%	12	9%	11	9%
Warren	10	22%	<10*	N/A	15	33%	12	27%
<b>New Jersey</b>	<b>1,257</b>	<b>43%</b>	<b>751</b>	<b>26%</b>	<b>717</b>	<b>24%</b>	<b>199</b>	<b>7%</b>

For suppressed data displayed in the table, these values are displayed as "<10\*\*".

An "-" indicates that no children/cases meet this category.

Due to data being suppressed, percentages could not be calculated for some counties resulting in N/A.

County totals may not meet state totals due to some cases where county of residence was listed as Other.

## Licensed Child Care Centers and Registered Family Child Care Providers: How Do They Differ?

Licensed child care centers and family child care educators both offer child care to children under the age of 13. However, there are key differences in the number of children they are permitted to serve and the locations in which they operate. Licensed child care centers serve a minimum of six children and must adhere to state licensing requirements. Family child care educators operate out of their homes and can be registered or unregistered. Regardless of their registration status, they can only serve a maximum of five children at a time. Family child care educators who register voluntarily are required to meet state registration requirements.

## Accessible and Affordable High-Quality Child Care

Research shows that high-quality child care in the early years boosts children's language abilities, executive-function/self-regulation, and social-emotional development—building a sturdy foundation for ongoing school success. Learn more about accessible, affordable, high-quality child care in New Jersey at <https://acnj.org/issues/early-learning/birth-to-three/affordable-quality-child-care/>.

# 5 Child Care

## Number of Licensed Child Care Centers

	2021	2022	2023	2024	21–24 % Change
Atlantic	103	103	103	102	-1%
Bergen	443	443	430	440	-1%
Burlington	142	142	148	149	5%
Camden	215	223	218	223	4%
Cape May	27	26	27	27	0%
Cumberland	67	71	76	76	13%
Essex	478	471	480	480	0%
Gloucester	125	127	121	120	-4%
Hudson	393	403	403	407	4%
Hunterdon	73	62	61	63	-14%
Mercer	200	193	197	196	-2%
Middlesex	329	336	338	341	4%
Monmouth	262	253	256	259	-1%
Morris	243	243	241	243	0%
Ocean	156	155	157	163	4%
Passaic	237	246	249	248	5%
Salem	19	19	20	19	0%
Somerset	159	157	155	150	-6%
Sussex	56	57	60	59	5%
Union	265	282	279	278	5%
Warren	44	45	48	49	11%
<b>New Jersey</b>	<b>4,036</b>	<b>4,057</b>	<b>4,067</b>	<b>4,092</b>	<b>1%</b>

Data as of December 31 of each year.

# 5 Child Care

## Capacity of Licensed Child Care Centers

	2021	2022	2023	2024	21–24 % Change
Atlantic	8,487	8,324	8,431	8,199	-3%
Bergen	43,852	44,450	42,732	43,445	-1%
Burlington	14,415	14,476	15,533	15,882	10%
Camden	21,288	22,796	22,054	22,831	7%
Cape May	1,943	1,718	1,908	1,931	-1%
Cumberland	7,050	7,250	7,539	7,666	9%
Essex	43,957	44,811	44,967	46,111	5%
Gloucester	10,822	11,021	10,779	10,542	-3%
Hudson	34,065	34,787	35,765	35,785	5%
Hunterdon	7,133	5,280	5,322	5,434	-24%
Mercer	19,628	19,019	19,569	19,806	1%
Middlesex	33,464	34,130	34,854	35,617	6%
Monmouth	25,422	25,426	25,843	26,256	3%
Morris	23,055	23,598	23,501	23,742	3%
Ocean	15,097	15,103	16,174	17,352	15%
Passaic	25,912	26,671	26,795	25,869	0%
Salem	1,245	1,311	1,458	1,415	14%
Somerset	19,352	19,058	18,781	18,211	-6%
Sussex	3,641	3,689	3,890	3,861	6%
Union	24,763	26,726	26,578	27,253	10%
Warren	3,087	3,154	3,257	3,252	5%
<b>New Jersey</b>	<b>387,678</b>	<b>392,798</b>	<b>395,730</b>	<b>400,460</b>	<b>3%</b>

Data as of December 31 of each year.

# 5 Child Care

## Registered Family Child Care Providers

	2021	2022	2023	2024	21–24 % Change
Atlantic	39	44	42	46	18%
Bergen	41	45	59	62	51%
Burlington	54	52	48	53	-2%
Camden	135	130	131	135	0%
Cape May	7	7	8	9	29%
Cumberland	26	30	37	37	42%
Essex	190	195	186	180	-5%
Gloucester	15	14	20	25	67%
Hudson	110	95	105	103	-6%
Hunterdon	4	4	3	4	0%
Mercer	23	24	27	23	0%
Middlesex	81	94	129	153	89%
Monmouth	45	46	48	45	0%
Morris	34	34	39	36	6%
Ocean	27	25	24	32	19%
Passaic	238	253	276	276	16%
Salem	20	18	18	16	-20%
Somerset	11	10	9	11	0%
Sussex	9	8	8	9	0%
Union	57	71	75	80	40%
Warren	24	26	26	27	13%
<b>New Jersey</b>	<b>1,190</b>	<b>1,225</b>	<b>1,317</b>	<b>1,362</b>	<b>14%</b>

Data as of December 31 of each year.



## State-Funded Preschool Enrollment

	2021-22	2022-23	2023-24	22-24 % Change
Atlantic	2,146	2,494	2,605	21%
Bergen	1,805	1,858	1,887	5%
Burlington	1,686	2,058	2,404	43%
Camden	3,319	3,706	3,748	13%
Cape May	662	668	680	3%
Cumberland	2,620	2,691	2,579	-2%
Essex	9,010	9,753	9,762	8%
Gloucester	1,156	1,503	1,699	47%
Hudson	8,064	8,635	8,555	6%
Hunterdon	85	137	147	73%
Mercer	1,937	1,777	2,034	5%
Middlesex	3,757	3,998	4,079	9%
Monmouth	2,182	2,489	2,742	26%
Morris	844	963	1,173	39%
Ocean	1,938	2,514	2,813	45%
Passaic	4,708	5,063	4,985	6%
Salem	589	721	789	34%
Somerset	762	837	1,005	32%
Sussex	284	316	455	60%
Union	5,346	5,771	5,754	8%
Warren	358	435	470	31%
<b>New Jersey</b>	<b>53,258</b>	<b>58,387</b>	<b>60,365</b>	<b>13%</b>

Facilities considerations are central to district preschool expansion planning; many public school buildings lack sufficient capacity to serve every 3- and 4-year-old in the community. Districts can mitigate this shortfall by partnering with licensed child care centers and Head Start programs, which are then required to deliver instruction that meets the same quality standards as district-run classrooms. In 2025, Governor Murphy reduced the minimum classroom space requirement for such partner sites from 63.3 to 42 square feet per child, significantly widening the pool of eligible providers and enabling more children to benefit from publicly-funded preschool.

## Public Kindergarten Enrollment

	2021–22	2022–23	2023–24	22–24 % Change
Atlantic	2,458	2,499	2,816	15%
Bergen	8,832	8,595	9,105	3%
Burlington	4,324	4,276	4,546	5%
Camden	5,468	5,521	5,659	3%
Cape May	779	694	728	-7%
Cumberland	1,692	1,774	1,891	12%
Essex	9,626	9,455	10,411	8%
Gloucester	2,911	2,928	3,000	3%
Hudson	6,046	5,941	6,452	7%
Hunterdon	1,113	1,100	1,137	2%
Mercer	3,869	3,745	4,112	6%
Middlesex	7,417	7,652	7,878	6%
Monmouth	5,593	5,517	5,741	3%
Morris	4,566	4,814	4,976	9%
Ocean	4,183	3,912	4,294	3%
Passaic	5,347	5,556	5,650	6%
Salem	654	641	687	5%
Somerset	3,071	2,787	2,942	-4%
Sussex	1,242	1,239	1,314	6%
Union	6,050	6,089	6,374	5%
Warren	961	999	1,070	11%
<b>New Jersey</b>	<b>86,202</b>	<b>85,734</b>	<b>90,783</b>	<b>5%</b>

# 6 Education

## Public Kindergarten Enrollment by Type

2023–24

	Full Day		Half Day		Total Enrollment
	#	%	#	%	#
Atlantic	2,816	100%	0	0%	2,816
Bergen	9,104	100%	<10	0%	9,105
Burlington	4,171	92%	375	8%	4,546
Camden	5,510	97%	149	3%	5,659
Cape May	728	100%	0	0%	728
Cumberland	1,891	100%	0	0%	1,891
Essex	10,411	100%	0	0%	10,411
Gloucester	3,000	100%	0	0%	3,000
Hudson	6,452	100%	0	0%	6,452
Hunterdon	1,137	100%	0	0%	1,137
Mercer	4,112	100%	0	0%	4,112
Middlesex	7,517	95%	361	5%	7,878
Monmouth	5,714	100%	27	0%	5,741
Morris	4,923	99%	53	1%	4,976
Ocean	4,294	100%	0	0%	4,294
Passaic	5,650	100%	0	0%	5,650
Salem	687	100%	0	0%	687
Somerset	2,315	79%	627	21%	2,942
Sussex	1,314	100%	0	0%	1,314
Union	5,999	94%	375	6%	6,374
Warren	1,070	100%	0	0%	1,070
<b>New Jersey</b>	<b>88,815</b>	<b>98%</b>	<b>1,968</b>	<b>2%</b>	<b>90,783</b>

# 6 Education

## Pre-K-12 Total Enrollment

	2021-22	2022-23	2023-24	22-24 % Change
Atlantic	42,524	42,568	42,283	-1%
Bergen	132,866	133,683	134,584	1%
Burlington	67,838	68,629	68,937	2%
Camden	81,748	83,059	83,221	2%
Cape May	11,912	11,803	11,641	-2%
Cumberland	28,226	28,650	28,850	2%
Essex	143,305	144,864	147,722	3%
Gloucester	46,059	46,475	46,788	2%
Hudson	89,648	90,711	91,158	2%
Hunterdon	17,707	17,476	17,615	-1%
Mercer	62,108	62,507	63,523	2%
Middlesex	125,551	126,950	127,481	2%
Monmouth	91,988	91,828	91,285	-1%
Morris	72,336	72,777	73,334	1%
Ocean	66,794	66,397	66,055	-1%
Passaic	84,629	85,726	85,838	1%
Salem	10,979	11,193	11,170	2%
Somerset	51,606	52,129	52,279	1%
Sussex	19,252	19,460	19,748	3%
Union	98,346	99,537	100,932	3%
Warren	15,499	15,503	15,548	0%
<b>New Jersey</b>	<b>1,360,916</b>	<b>1,371,921</b>	<b>1,379,988</b>	<b>1%</b>

# 6 Education

## Percentage of Pre-K-12 Total Enrollment by Race/Ethnicity

2023-24

	Asian	Black	Hispanic	Multiracial	White
Atlantic	8%	18%	34%	4%	36%
Bergen	16%	5%	32%	3%	43%
Burlington	7%	19%	16%	6%	52%
Camden	6%	23%	30%	4%	36%
Cape May	1%	7%	19%	3%	70%
Cumberland	1%	19%	53%	4%	23%
Essex	6%	37%	34%	3%	19%
Gloucester	3%	15%	14%	5%	63%
Hudson	10%	13%	57%	2%	18%
Hunterdon	6%	3%	15%	3%	73%
Mercer	18%	19%	36%	3%	23%
Middlesex	28%	10%	36%	3%	23%
Monmouth	6%	7%	22%	3%	61%
Morris	13%	3%	24%	3%	56%
Ocean	2%	5%	27%	3%	63%
Passaic	5%	9%	61%	1%	23%
Salem	1%	19%	20%	5%	55%
Somerset	25%	10%	27%	4%	34%
Sussex	2%	3%	18%	3%	73%
Union	5%	18%	48%	2%	26%
Warren	3%	10%	22%	4%	61%
<b>New Jersey</b>	<b>10%</b>	<b>14%</b>	<b>34%</b>	<b>3%</b>	<b>38%</b>

Some racial groups are excluded due to low percentages.

## Percentage of Multilingual Learners in Pre-K-12 Total Enrollment

	2022–23	2023–24
Atlantic	7%	8%
Bergen	6%	6%
Burlington	3%	4%
Camden	6%	6%
Cape May	4%	5%
Cumberland	12%	15%
Essex	11%	12%
Gloucester	2%	2%
Hudson	15%	16%
Hunterdon	3%	3%
Mercer	11%	13%
Middlesex	10%	11%
Monmouth	5%	6%
Morris	6%	6%
Ocean	6%	7%
Passaic	15%	16%
Salem	3%	3%
Somerset	7%	8%
Sussex	1%	2%
Union	15%	16%
Warren	4%	4%
<b>New Jersey</b>	<b>9%</b>	<b>10%</b>

## When is a Student Considered a Multilingual Learner?

Schools are required to provide Multilingual Learners (MLs) formerly known as English Language Learners (ELL), access to equity and excellence in education. A ML is a student whose primary language is other than English and is identified as a student who does not have English language proficiency in listening, speaking and writing. Once identified, he or she will be provided with English language services to be successful in the district's academic program. MLs are to be assessed annually to measure progress toward English language proficiency and to determine readiness for exiting the program.

## Special Education Classification Rates, Ages 3–21

	2021–22		2022–23		2023–24		22–24
	Special Ed. Enrollment	Classification Rate	Special Ed. Enrollment	Classification Rate	Special Ed. Enrollment	Classification Rate	% Change of Special Ed. Enrollment
Atlantic	7,392	17.27	7,481	17.46	7,735	18.23	5%
Bergen	22,677	16.94	23,366	17.33	24,487	18.03	8%
Burlington	13,088	19.17	13,437	19.44	13,919	20.04	6%
Camden	13,807	16.92	13,988	16.63	14,584	17.31	6%
Cape May	2,173	18.25	2,189	18.54	2,193	18.86	1%
Cumberland	4,596	16.16	4,667	16.4	5,010	17.19	9%
Essex	21,484	14.85	21,815	14.94	22,873	15.34	6%
Gloucester	8,784	19.06	9,040	19.41	9,331	19.89	6%
Hudson	11,683	12.90	10,703	11.68	12,346	13.39	6%
Hunterdon	3,279	18.40	3,277	18.37	3,473	19.58	6%
Mercer	9,627	15.26	9,629	15.23	9,778	15.32	2%
Middlesex	18,203	14.43	18,913	14.83	19,931	15.55	9%
Monmouth	16,770	18.08	16,887	18.22	17,048	18.53	2%
Morris	12,802	17.52	13,045	17.75	13,508	18.26	6%
Ocean	14,099	20.85	14,097	20.94	14,449	21.53	2%
Passaic	13,204	15.67	13,732	16.01	14,619	16.79	11%
Salem	1,992	18.29	2,014	18.13	2,096	18.91	5%
Somerset	8,538	16.41	8,606	16.36	8,863	16.8	4%
Sussex	3,985	20.56	4,046	20.59	4,204	21.13	5%
Union	14,349	14.47	14,346	14.28	15,059	14.79	5%
Warren	2,893	18.54	2,963	18.96	3,001	19.14	4%
<b>New Jersey</b>	<b>225,447</b>	<b>17.39</b>	<b>228,242</b>	<b>16.51</b>	<b>238,721</b>	<b>17.13</b>	<b>6%</b>

# 6 Education

## Percentage of 3rd Graders Meeting or Exceeding Expectations on New Jersey Student Learning Assessments

	English Language Arts			Mathematics		
	2021–22	2022–23	2023–24	2021–22	2022–23	2023–24
Atlantic	27%	24%	29%	33%	33%	34%
Bergen	59%	60%	58%	62%	62%	62%
Burlington	40%	37%	39%	45%	44%	45%
Camden	36%	36%	40%	37%	40%	42%
Cape May	36%	31%	37%	43%	34%	40%
Cumberland	21%	17%	21%	21%	24%	26%
Essex	41%	41%	43%	38%	40%	43%
Gloucester	41%	38%	42%	47%	47%	49%
Hudson	39%	40%	41%	38%	39%	43%
Hunterdon	40%	46%	52%	53%	57%	60%
Mercer	37%	34%	36%	39%	39%	41%
Middlesex	45%	44%	45%	49%	49%	50%
Monmouth	49%	47%	49%	55%	54%	55%
Morris	58%	58%	59%	63%	63%	64%
Ocean	36%	34%	35%	43%	40%	43%
Passaic	29%	28%	32%	32%	31%	34%
Salem	34%	32%	33%	34%	35%	33%
Somerset	49%	50%	54%	56%	57%	60%
Sussex	41%	38%	44%	46%	45%	49%
Union	41%	42%	42%	45%	46%	45%
Warren	32%	33%	35%	40%	39%	40%
<b>New Jersey</b>	<b>42%</b>	<b>42%</b>	<b>44%</b>	<b>45%</b>	<b>46%</b>	<b>48%</b>



# 6 Education

## Percentage of 8th Graders Meeting or Exceeding Expectations on New Jersey Student Learning Assessments

	English Language Arts			Mathematics		
	2021–22	2022–23	2023–24	2021–22	2022–23	2023–24
Atlantic	38%	42%	42%	10%	13%	12%
Bergen	65%	69%	66%	24%	27%	29%
Burlington	48%	49%	45%	17%	18%	19%
Camden	43%	48%	45%	11%	13%	14%
Cape May	48%	51%	43%	16%	17%	18%
Cumberland	22%	24%	25%	4%	5%	6%
Essex	49%	54%	53%	13%	15%	18%
Gloucester	47%	49%	54%	13%	14%	17%
Hudson	49%	55%	52%	16%	18%	21%
Hunterdon	62%	68%	63%	22%	31%	32%
Mercer	49%	53%	47%	10%	8%	12%
Middlesex	52%	55%	53%	13%	16%	16%
Monmouth	58%	62%	60%	21%	24%	25%
Morris	67%	70%	67%	23%	26%	31%
Ocean	46%	52%	48%	16%	18%	19%
Passaic	43%	47%	44%	15%	18%	19%
Salem	39%	40%	36%	13%	13%	13%
Somerset	65%	68%	67%	17%	21%	23%
Sussex	56%	56%	55%	21%	20%	22%
Union	50%	54%	53%	12%	14%	15%
Warren	43%	49%	48%	17%	17%	18%
<b>New Jersey</b>	<b>51%</b>	<b>55%</b>	<b>53%</b>	<b>15%</b>	<b>18%</b>	<b>19%</b>

# 6 Education

## Percentage of New Jersey's 3rd Graders by Race/Ethnicity Meeting or Exceeding Expectations on New Jersey Student Learning Assessments

	English Language Arts			Mathematics		
	2021–22	2022–23	2023–24	2021–22	2022–23	2023–24
Asian	71%	70%	70%	80%	78%	79%
African American	26%	26%	30%	23%	25%	27%
Hispanic	28%	28%	29%	27%	29%	31%
White	52%	51%	53%	59%	58%	60%
Other	50%	51%	53%	53%	53%	56%
<b>Total</b>	<b>42%</b>	<b>42%</b>	<b>44%</b>	<b>45%</b>	<b>46%</b>	<b>48%</b>

Note: Some racial groups had a suppressed number of valid scores and for this reason are excluded from the table above.

## Percentage of New Jersey's 8th Graders by Race/Ethnicity Meeting or Exceeding Expectations on New Jersey Student Learning Assessments

	English Language Arts			Mathematics		
	2021–22	2022–23	2023–24	2021–22	2022–23	2023–24
Asian	82%	84%	83%	36%	41%	41%
African American	32%	38%	37%	7%	8%	10%
Hispanic	38%	42%	39%	11%	12%	13%
White	60%	64%	62%	21%	25%	27%
Other	57%	60%	59%	18%	21%	22%
<b>Total</b>	<b>51%</b>	<b>55%</b>	<b>53%</b>	<b>15%</b>	<b>18%</b>	<b>19%</b>

Note: Some racial groups had a suppressed number of valid scores and for this reason are excluded from the table above.

# 6 Education

## Percentage of Population Ages 25 and Older with a Bachelor's Degree or Higher

	2014–2018	2019–2023
Atlantic	27%	31%
Bergen	48%	53%
Burlington	37%	42%
Camden	32%	35%
Cape May	31%	37%
Cumberland	15%	18%
Essex	35%	38%
Gloucester	32%	36%
Hudson	41%	48%
Hunterdon	52%	56%
Mercer	42%	45%
Middlesex	43%	45%
Monmouth	45%	51%
Morris	54%	57%
Ocean	29%	34%
Passaic	28%	30%
Salem	21%	24%
Somerset	55%	57%
Sussex	35%	40%
Union	35%	39%
Warren	32%	36%
<b>New Jersey</b>	<b>39%</b>	<b>43%</b>

# 7 Teens

## Births to Adolescents and Teens Ages 10-19

	2021		2022		% Change
	#	% Out of Total Births	#	% Out of Total Births	
Atlantic	92	3%	109	4%	18%
Bergen	79	1%	92	1%	16%
Burlington	88	2%	72	2%	-18%
Camden	218	3%	208	3%	-5%
Cape May	22	3%	23	3%	5%
Cumberland	106	6%	132	7%	25%
Essex	329	3%	299	3%	-9%
Gloucester	60	2%	54	2%	-10%
Hudson	167	2%	182	2%	9%
Hunterdon	12	1%	<10	1%	-33%
Mercer	195	5%	186	4%	-5%
Middlesex	171	2%	164	2%	-4%
Monmouth	80	1%	97	2%	21%
Morris	46	1%	48	1%	4%
Ocean	104	1%	115	1%	11%
Passaic	231	4%	219	3%	-5%
Salem	33	5%	38	5%	15%
Somerset	49	2%	51	2%	4%
Sussex	11	1%	13	1%	18%
Union	175	3%	183	3%	5%
Warren	18	2%	24	2%	33%
<b>New Jersey</b>	<b>2,286</b>	<b>2%</b>	<b>2,317</b>	<b>2%</b>	<b>1%</b>

## Juvenile Arrests

	2020		2022		2023		20–23
	#	Rate	#	Rate	#	Rate	% Change
Atlantic	445	7.7	195	3.4	422	7.5	-5%
Bergen	617	3.0	500	2.5	592	3.0	-4%
Burlington	448	4.7	239	2.5	206	2.2	-54%
Camden	1,056	8.8	792	6.7	881	7.4	-17%
Cape May	358	21.3	550	33.9	396	24.8	11%
Cumberland	257	6.8	289	8.0	228	6.1	-11%
Essex	929	4.5	842	4.3	1034	5.2	11%
Gloucester	276	4.2	145	2.3	196	3.0	-29%
Hudson	667	4.5	435	3.1	446	3.3	-33%
Hunterdon	50	2.0	19	0.8	12	0.5	-76%
Mercer	735	8.8	571	7.0	640	7.7	-13%
Middlesex	472	2.5	400	2.2	424	2.3	-10%
Monmouth	593	4.4	351	2.7	364	2.7	-39%
Morris	322	3.0	119	1.1	103	1.0	-68%
Ocean	383	2.4	187	1.2	159	1.0	-58%
Passaic	852	6.8	190	1.6	214	1.8	-75%
Salem	111	7.9	48	3.4	67	4.7	-40%
Somerset	303	4.1	75	1.0	83	1.1	-73%
Sussex	70	2.5	30	1.1	53	1.9	-24%
Union	422	3.1	320	2.4	326	2.4	-23%
Warren	114	5.3	90	4.3	143	6.7	25%
<b>New Jersey</b>	<b>9,480</b>	<b>4.6</b>	<b>6,387</b>	<b>3.2</b>	<b>6989</b>	<b>3.5</b>	<b>-26%</b>

Note: Rate is per 1,000. 2021 data is not included due to differences in data collection making it difficult to compile and not as accurate.

## Youth Admissions to County Detention

	2021	2022	2023	21-23 % Change
Atlantic	69	72	111	61%
Bergen	36	50	56	56%
Burlington	54	70	73	35%
Camden	234	254	280	20%
Cape May	16	<10	10	-38%
Cumberland	38	41	67	76%
Essex	338	447	439	30%
Gloucester	23	22	35	52%
Hudson	167	149	147	-12%
Hunterdon	<10	<10	<10	N/A
Mercer	76	94	98	29%
Middlesex	65	76	98	51%
Monmouth	36	55	33	-8%
Morris	23	20	17	-26%
Ocean	26	30	39	50%
Passaic	88	86	85	-3%
Salem	14	27	17	21%
Somerset	19	19	25	32%
Sussex	<10	<10	<10	N/A
Union	74	77	84	14%
Warren	11	12	<10	N/A
<b>New Jersey</b>	<b>1,411</b>	<b>1,613</b>	<b>1,732</b>	<b>23%</b>

*For suppressed data displayed in the table, these values are displayed as "<10".*

*Due to data being suppressed, % change could not be calculated for some counties resulting in N/A.*

## Percentage of Youth Admissions to County Detention by Race/Ethnicity

2023

	Black or African American	Caucasian	Hispanic	Other
Atlantic	84%	7%	9%	0%
Bergen	43%	9%	46%	2%
Burlington	67%	25%	5%	3%
Camden	80%	8%	12%	1%
Cape May	50%	20%	30%	N/A
Cumberland	66%	9%	25%	N/A
Essex	88%	5%	7%	N/A
Gloucester	74%	23%	3%	N/A
Hudson	65%	5%	27%	N/A
Hunterdon	50%	N/A	50%	N/A
Mercer	77%	3%	19%	1%
Middlesex	33%	15%	47%	5%
Monmouth	67%	21%	12%	N/A
Morris	47%	12%	41%	N/A
Ocean	46%	31%	21%	N/A
Passaic	54%	N/A	45%	1%
Salem	76%	0%	24%	N/A
Somerset	68%	4%	28%	0%
Sussex	N/A	63%	25%	13%
Union	63%	11%	25%	N/A
Warren	63%	13%	25%	0%
<b>New Jersey</b>	<b>71%</b>	<b>9%</b>	<b>19%</b>	<b>1%</b>

N/A indicates data not available.

## Teens Ages 16–19 Not Working and Not in School

	2014–2018		2019–2023	
	#	%	#	%
Atlantic	974	7%	944	7%
Bergen	1,383	3%	1,663	4%
Burlington	1,322	6%	1,248	6%
Camden	1,604	6%	1,398	6%
Cape May	339	8%	230	7%
Cumberland	1,193	16%	1,004	14%
Essex	3,747	9%	3,331	7%
Gloucester	938	6%	722	4%
Hudson	1,976	8%	2,170	8%
Hunterdon	460	6%	236	4%
Mercer	1,454	7%	734	3%
Middlesex	1,713	4%	1,689	3%
Monmouth	1,112	3%	1,245	4%
Morris	970	4%	780	3%
Ocean	1,383	5%	1,115	4%
Passaic	2,005	7%	1,343	5%
Salem	171	5%	165	5%
Somerset	762	4%	915	5%
Sussex	239	3%	407	6%
Union	1,797	6%	2,092	7%
Warren	209	4%	372	7%
<b>New Jersey</b>	<b>25,751</b>	<b>6%</b>	<b>23,803</b>	<b>5%</b>

Disconnected youth are more likely to face additional challenges as they continue their path to adulthood, including poverty, employment struggles, poor physical and mental health, limited skills, and unavailability of satisfactory jobs. ACNJ's newest initiative, positive youth development, aims to promote initiatives that respond to the needs of young people, mobilizing community resources to improve learning, school climate, and mental health. To learn more, visit <https://acnj.org/positive-youth-development/>.





*Note: In some instances, data for certain years may have been updated since last collected, and therefore, due to data shifts, will look slightly different than the numbers previously published.*

## 1 Demographics

**Total Population, 2021-2023.** As reported by the U.S. Census Bureau, Population Division, Population Estimates Program. Data are as of July 1 for each year.

**Child Population Under Age 18, 2021-2023.** As reported by the U.S. Census Bureau, Population Division, Population Estimates Program. Data are as of July 1 for each year.

**Population Under Age 20 by Race/Ethnicity, 2023.** As reported by the U.S. Census Bureau, Population Division, Population Estimates Program. Data are as of July 1 for year indicated.

**Child Population Under Age 5, 2021-2023.** As reported by the U.S. Census Bureau, Population Division, Population Estimates Program. Data are as of July 1 for each year.

**Child Population Under Age 5 by Race/Ethnicity, 2023.** As reported by the U.S. Census Bureau, Population Division, Population Estimates Program. Data are as of July 1 for year indicated.

**Languages Spoken in the Home by Percentage of Population 5 and Older, 2014-2018 and 2019-2023.** As reported by the U.S. Census Bureau, American Community Survey chart S1601 using 5-year estimates.

**Percentage of Households with Children by Type, 2019-2023.** As reported by the U.S. Census Bureau, American Community Survey chart B09005 using 5-year estimates.

## 2 Family Economic Security

**2023 Federal Poverty Thresholds for a Family of Four.** As reported by the U.S. Census Bureau. Thresholds for a family of four (two adults and two children) living in poverty.

**Children Living Below the Federal Poverty Level, 2014-2018 and 2019-2023.** As reported by the U.S. Census Bureau, American Community Survey chart B17001 using 5-year estimates.

**NJ Earned Income Tax Credits, Recipients with at Least One Dependent Under Age 19, 2021-2023.** As reported by the N.J. Department of Treasury. Number of New Jersey taxpayers receiving a state EITC credit, total amount of EITC credits issued, and average credit amount.

**Federal Earned Income Tax Credits, 2020-2022.** As reported by the U.S. Internal Revenue Service. Number of New Jersey taxpayers claiming a federal EITC and average claim.

**Unemployment Rate, 2021-2023.** As reported by the U.S. Department of Labor, Bureau of Labor Statistics, Local Area Unemployment Statistics. Rates are not seasonally adjusted and are annual averages.

**Median Family Income with Children Under 18, 2014-2018 and 2019-2023.** As reported by the U.S. Census Bureau, American Community Survey chart B19125 using 5-year estimates.

**Percentage of Households Spending 30% or More of Income on Rent, 2014-2018 and 2019-2023.** As reported by the U.S. Census Bureau, American Community Survey chart B25070 using 5-year estimates.

**Number of Children Participating in TANF, 2022-2024.** As reported by the N.J. Department of Human Services, Division of Family Development. Data are as of June 30 for each year.

**Number of Children Participating in SNAP, 2022-2024.** As reported by the N.J. Department of Human Services, Division of Family Development. Data are as of June 30 for each year.

**WIC Enrollment and Participation, 2022-2024.** As reported by the N.J. Department of Health. Number of women, infants, and children enrolled in the Women, Infants, and Children program, which includes healthcare referrals, immunizations screenings, nutrition counseling, and a monthly food stipend. Data are as of June 30 for each year.



**Estimated Food Insecure Child Population, 2020-2022.** Estimated number and rate of children less than 18 years of age by county and state calculated by Feeding America. Estimates are calculated by analyzing state-level relationships between food insecurity and its determinants (i.e. unemployment, poverty, disability, homeownership, and median income) as well as percentage of the population that is Black and percentage of population that is Hispanic. Then, the coefficient estimates from the state analysis are used in conjunction with the same variables for every county. For more information, visit [www.feedingamerica.org](http://www.feedingamerica.org).

**Children Receiving Free or Reduced-Price School Breakfast, 2022-2024.** As reported by the N.J. Department of Agriculture. Data represent children attending public schools, including charter schools. Data are as of October for each year.

**Children Receiving Free or Reduced-Price School Lunch, 2022-2024.** As reported by the N.J. Department of Agriculture. Data represent children attending public schools, including charter schools. Data are as of October for each year.

**Free and Reduced-Price Student Participation in Breakfast per 100 Participating in Lunch, 2022-2024.** As reported by the N.J. Department of Agriculture. Percentages represent the total number of students receiving a free or reduced-price breakfast out of the total number of students receiving a free or reduced-price lunch. Data represent children attending public schools, including charter schools. Data are as of October for each year.

## 3 Child Health

**Total Births, 2021-2022.** As reported by the N.J. Department of Health, New Jersey State Health Assessment Data, New Jersey Birth Certificate Database. The total number of live births. Data accessed as of December 4, 2024.

**Births to Foreign-Born Women, 2021-2022.** As reported by the N.J. Department of Health, New Jersey State Health Assessment Data, New Jersey Birth Certificate Database. The number of births by mothers born outside of the United States and its territories. Data accessed as of December 4, 2024.

**Births by Parity (Previous Births), 2021-2022.** As reported by the N.J. Department of Health, New Jersey State Health Assessment Data, New Jersey Birth Certificate Database. According to the New Jersey Department of Health, parity is the number of previous live-born children a woman has delivered. Data accessed as of December 4, 2024.

**Expecting Women Receiving Early Prenatal Care, 2021-2022.** As reported by the N.J. Department of Health, New Jersey State Health Assessment Data, New Jersey Birth Certificate Database. Live births for which the mother received prenatal care beginning in the first trimester. Data accessed as of December 4, 2024.

**Preterm Births, 2021-2022.** As reported by the N.J. Department of Health, New Jersey State Health Assessment Data, New Jersey Birth Certificate Database. Percentage and number of total births that were considered preterm. A preterm birth is defined as less than 37 weeks. Data accessed as of February 27, 2025.

**Babies Born with Low Birthweights, 2021-2022.** As reported by the N.J. Department of Health, New Jersey State Health Assessment Data, New Jersey Birth Certificate Database. The percentage and number of babies born weighing less than 2,500-grams. Data accessed as of December 4, 2024.

**Percentage of Expecting Women Receiving Early Prenatal Care by Race/Ethnicity, 2021-2022.** As reported by the N.J. Department of Health, New Jersey State Health Assessment Data, New Jersey Birth Certificate Database. Live births for which the mother received prenatal care beginning in the first trimester. Data accessed as of December 4, 2024.

**Percentage of Preterm Births by Race/Ethnicity, 2021-2022.** As reported by the N.J. Department of Health, New Jersey State Health Assessment Data, New Jersey Birth Certificate Database. Percentage of total births that were considered preterm. A preterm birth is defined as less than 37 weeks. Data accessed as of December 4, 2024.



**Percentage of Babies Born with Low Birthweight by Race/Ethnicity, 2021-2022.** As reported by the N.J. Department of Health, New Jersey State Health Assessment Data, New Jersey Birth Certificate Database. The percentage of babies born weighing less than 2,500-grams out of the total number of live births. Data accessed as of December 4, 2024.

**Infant Mortality, 2012-2016 and 2017-2021.** As reported by the N.J. Department of Health, New Jersey State Health Assessment Data, New Jersey Death and Birth Certificate Databases. The number of infants under one year who died during the specified period. Rate is the number of infant deaths per 1,000 live births. Data accessed as of December 18, 2024.

**New Jersey Infant Mortality by Race/Ethnicity, 2012-2016 and 2017-2021.** As reported by the N.J. Department of Health, New Jersey State Health Assessment Data, New Jersey Death and Birth Certificate Databases. The number of infants under one year who died during that year. Rate is the number of infant deaths per 1,000 live births. Data accessed as of December 18, 2024.

**Families Receiving State-Funded Intensive Home Visitation Programs, 2021-2024.** As reported by the N.J. Department of Children and Families. Data are as of June 30 for each year.

**Number of Children Ages 6-26 Months Tested for Lead, 2020-2022.** As reported by the N.J. Department of Health, Public Health Services Branch, Division of Family Health Services. Unknown addresses indicate that the addresses could not be geocoded in the system or the address was not provided to the Department. Data accessed as of April 22, 2024.

**Number of Children Under Age 6 Tested for Lead, 2020-2022.** As reported by the N.J. Department of Health, Public Health Services Branch, Division of Family Health Services. Unknown addresses indicate that the addresses could not be geocoded in the system or the address was not provided to the Department. Data accessed as of April 22, 2024.

**NJ FamilyCare/Medicaid, Recipients Under Age 19, 2022-2024.** As reported by the N.J. Department of Human Services. Includes children under age 19 enrolled in Medicaid, which is available to children living in families earning below 133% of the federal poverty level and children enrolled in the CHIP portion of NJ FamilyCare, which is available to children living in families earning up to 355% of the federal poverty level. Data are from March of each year and are point-in-time snapshots that do not reflect any retroactivity. Data retrieved August 13, 2024.

**Number of Dental Practices Listed in Ages 0-6 Years MCO Directories, 2024.** As reported by the New Jersey Health Care Quality Institute (NJHCQI). The NJHCQI conducted a secret shopper survey in July 2024 where they called 824 general and pediatric practices that treat children under the age of 6. FQHCs were included in the list of practices.

**Children Under Age 19 Without Health Insurance, 2014-2018 and 2019-2023.** As reported by the U.S. Census Bureau, American Community Survey chart B27001 using 5-year estimates. Data are not comparable to previous years' estimates for children without health insurance due to a change in the included ages.

## 4 Child Protection

**Number of Children Reported for Abuse/Neglect, 2022-2024.** As reported by the N.J. Department of Children and Families. Number of children who were reported for child abuse/neglect. Data are as of December 31 for each year. Data retrieved March 22, 2025.

**Children Under Child Protection and Permanency Supervision, 2022-2024.** As reported by the N.J. Department of Children and Families. For location, children are placed in 'other' in cases where a county of assignment could not be determined. Data are as of December 31 for each year. Data retrieved March 22, 2025.



**Children with Substantiated/Established Cases of Abuse/Neglect, 2024.** As reported by the N.J. Department of Children and Families. The number of children found to be victims of child abuse/neglect. Previously, investigators could only determine whether reported abuse/neglect was “substantiated” or “unfounded.” Data are as of December 31. Data retrieved March 22, 2025.

**Number of Children Receiving In-Home CP&P Supervision, 2022-2024.** As reported by the N.J. Department of Children and Families. For location, children are placed in ‘other’ in cases where a county of assignment could not be determined. Data retrieved March 22, 2025.

**Number of Children in Out-of-Home Placements, 2022-2024.** As reported by the N.J. Department of Children and Families. For location, children are placed in ‘other’ in cases where a county of assignment could not be determined. Data are as of December 31 for each year. Data retrieved March 22, 2025.

**Children Receiving In-Home CP&P Supervision, Race/Ethnicity, 2024.** As reported by the N.J. Department of Children and Families. “Another Race” includes American Indian or Alaska Native, Native Hawaiian or Other Pacific Islander, Asian, and Two or More Races. For location, children are placed in ‘other’ in cases where a county of assignment could not be determined. Data are as of December 31. Data retrieved March 22, 2025.

**Children in Out-of-Home Placement by Race/Ethnicity, 2024.** As reported by the N.J. Department of Children and Families. “Another Race” includes American Indian or Alaska Native, Native Hawaiian or Other Pacific Islander, Asian, and Two or More Races. For location, children are placed in ‘other’ in cases where a county of assignment could not be determined. Data are as of December 31. Data retrieved March 22, 2025.

## 5 Child Care

**Number of Licensed Child Care Centers, 2021-2024.** As reported by the N.J. Department of Children and Families. Data are as of December 31 for each year. The number of state-licensed child care centers.

**Capacity of Licensed Child Care Centers, 2021-2024.** As reported by the N.J. Department of Children and Families. The capacity of state-licensed child care centers. Data are as of December 31 for each year.

**Registered Family Child Care Providers, 2021-2024.** As reported by the N.J. Department of Children and Families. Family child care providers comply with state requirements, but operate as independent small businesses. Data are as of December 31 for each year.

## 6 Education

**State-Funded Preschool Enrollment, 2021-22 to 2023-24.** As reported by the N.J. Department of Education. Number of 3- and 4-year-old students enrolled in half and full day New Jersey Department of Education-approved preschools, operated both in-district and in community centers. Excludes children enrolled in Head Start or other federally-funded programs that do not receive any state aid.

**Public Kindergarten Enrollment, 2021-22 to 2023-24.** As reported by the N.J. Department of Education, October Enrollment Data. Data include students enrolled in full and half day programs in both traditional district and charter schools.

**Public Kindergarten Enrollment by Type, 2023-24.** As reported by the N.J. Department of Education, October Enrollment Data. Data include students enrolled in full and half day programs in both traditional district and charter schools.

**Pre-K-12 Total Enrollment, 2021-22 to 2023-24.** As reported by the N.J. Department of Education, October Enrollment Data. Data include both traditional district and charter schools. Please note that total enrollment figures do not include students enrolled in public preschool programs operating within community-based providers.

**Percentage of Pre-K-12 Total Enrollment by Race/Ethnicity, 2023-24.** As reported by the N.J. Department of Education, October Enrollment Data. Data include both traditional district and charter schools. Please note that total enrollment figures do not include students enrolled in public preschool programs operating within community-based providers.



**Percentage of Multilingual Learners in Pre-K-12 Total Enrollment, 2022-23 and 2023-24.** As reported by the N.J. Department of Education. County calculations done by Advocates for Children of New Jersey and includes charter schools.

**Special Education Classification Rates, Ages 3-21, 2021-22 to 2023-24.** As reported by the N.J. Department of Education. Number of students who are classified, ages 3-21. Data include both traditional district schools and charter schools and public and non-public students. Charter totals may be higher due to suppression of districts with fewer than 10 students.

**Percentage of 3rd Graders Meeting or Exceeding Expectations on New Jersey Student Learning Assessments, 2021-22 to 2023-24.** As reported by the N.J. Department of Education. The NJSLA in English Language Arts and Mathematics was administered in the Spring of the specified school year. Percentage meeting or exceeding standards are those students scoring Level 4 or Level 5. Data suppressed in some instances to protect students' confidentiality.

**Percentage of 8th Graders Meeting or Exceeding Expectations on New Jersey Student Learning Assessments, 2021-22 to 2023-24.** As reported by the N.J. Department of Education. The NJSLA in English Language Arts and Mathematics was administered in the Spring of the specified year. Percentage meeting or exceeding standards are those students scoring Level 4 or Level 5. Data suppressed in some instances to protect students' confidentiality.

**Percentage of 3rd Graders by Race/Ethnicity Meeting or Exceeding Expectations on New Jersey Student Learning Assessments, 2021-22 to 2023-24.** As reported by the N.J. Department of Education. The NJSLA in English Language Arts and Mathematics was administered in the Spring of the specified year. Percentage meeting or exceeding standards are those students scoring Level 4 or Level 5. Data suppressed in some instances to protect students' confidentiality.

**Percentage of 8th Graders by Race/Ethnicity Meeting or Exceeding Expectations on New Jersey Student Learning Assessments, 2021-22 to 2023-24.** As reported by the N.J. Department of Education. The NJSLA in English Language Arts and Mathematics was administered in the Spring of the specified year. Percentage meeting or exceeding standards are those students scoring Level 4 or Level 5. Data suppressed in some instances to protect students' confidentiality.

**Percentage of Population Ages 25 and Older with a Bachelor's Degree or Higher, 2014-2018 and 2019-2023.** As reported by the U.S. Census Bureau, American Community Survey chart S1501 using 5-year estimates.

## 7 Teens

**Births to Adolescents and Teens, Ages 10-19, 2021-2022.** As reported by the N.J. Department of Health, New Jersey State Health Assessment Data, New Jersey Birth Certificate Database. The percentage and number of live births to teenagers. Data accessed as of January 22, 2025.

**Juvenile Arrests, 2020, 2022, and 2023.** As reported by the N.J. Department of Law and Public Safety, Division of State Police, Uniform Crime Report. Rate is per 1,000. 2021 data is not included due to differences in data collection making it difficult to compile and not as accurate.

**Youth Admissions to County Detention, 2021-2023.** As reported by the New Jersey Juvenile Justice Commission. Note, counts of less than ten are suppressed in order to retain confidentiality.

**Percentage of Youth Admissions to County Detention by Race/Ethnicity, 2023.** As reported by the New Jersey Juvenile Justice Commission.

**Teens Ages 16-19 Not Working and Not in School, 2014-2018 and 2019-2023.** As reported by the U.S. Census Bureau, American Community Survey chart B14005 using 5-year estimates. Surveys are recorded by the respondents, which in most cases, are the heads of households. These data are not self-reported by the youth.

***Investments in our children reap results – not for just one child, but for thousands across New Jersey. ACNJ works daily to be a voice for New Jersey’s Children.***

ACNJ’s roots grew out of some of the earliest efforts to protect abused and abandoned children in New Jersey. ACNJ is part of an evolution that began in 1847 when the Newark Orphan Asylum was established. Over the years, other child-related organizations were created to care for orphans, children living in foster care, and children in troubled families. In 1978, the remaining direct services provider, the Child Service Association, and the Citizens Committee for Children of New Jersey, a grassroots advocacy group of volunteers, merged to form what was then called the Association for Children of New Jersey. ACNJ officially changed its name in July 2010.

ACNJ’s mission is to advance and strengthen policies and programs that promote equitable opportunities for all New Jersey children and youth. Toward this end, we identify needs from parents and community partners, data, research, and policy analysis and address them through education, engagement, and collaboration with policy-makers, advocates, and the public. The strength of ACNJ lies in its diverse and influential Board of Trustees, partners, funders, Parent Leadership Council, and professional staff, representing a broad spectrum of individuals and organizations deeply committed to an equitable and inclusive state that empowers all children to reach their fullest potential.

***ACNJ invites you to learn more about our work. Visit [acnj.org](http://acnj.org) to explore our issue areas, learn about our policy agenda, sign up for eNews, and more.***

## How to Help...

***Help New Jersey's children grow up safe, healthy, and educated.***

**Donate to ACNJ today at [www.acnj.org](http://www.acnj.org).**

*As a non-partisan organization, we accept no state funding for advocacy, ensuring the freedom to speak out for children who have no voice and no vote. Our sole mission is to put the needs of New Jersey's children first.*

For more information about how you can help support our work, please contact Richard Santangelo, Fundraising Manager, at [rsantangelo@acnj.org](mailto:rsantangelo@acnj.org) or (973) 643-3876, ext. 213.

## Thank You!

***Advocates for Children of New Jersey appreciates the support of its donors and acknowledges the generosity of these funders:***



**Victor and Pearl Tumpeer  
Foundation**



35 Halsey Street  
P.O. Box 32069  
Newark, NJ 07102  
(973) 643-3876  
(973) 643-9153 (fax)

[advocates@acnj.org](mailto:advocates@acnj.org)

[www.acnj.org](http://www.acnj.org)

*Connect with us:*



[@ACNJForKids](https://www.instagram.com/ACNJForKids)

[www.acnj.org](http://www.acnj.org)



Giving Every Child A Chance®