

# National Home-based Child Care Landscape

---

## **Where are young children having their early childhood experiences?**

- 7 million children 0-5 in home-based child care
  - Less than 1 million in licensed family child care
  - Most in paid and unpaid family, friend, and neighbor care
- 3.8 million children 0-5 in center-based care

## **Who receives care in home-based child care?**

- Children from low-income families
- Black and Latinx children
- Infants and toddlers
- Children in rural areas
- Children with special needs
- Children whose parents work nontraditional hours

# National Home-based Child Care Landscape

---

## **Why do families select home-based child care?**

- Trusting relationships with providers
- Shared culture, values, language, and child-rearing practices
- Accessibility and neighborhood care
- Care offered to mixed age groups (siblings stay together, continuity of care)
- Care offered in a family-style environment
- Accommodations for non-traditional work hours
- Cost-effective care

# National Home-based Child Care Landscape

---

**Declining supply:** between 2006 and 2015, the number of home-based providers receiving subsidies through the Child Care and Development Block Grant declined by more than 60 percent.

**Long hours with low compensation:** average annual income for a licensed provider is \$29,377 from public and private sources for an average of 56.5 hours of care a week (10 to 12 hours a day). Licensed providers earn an annual salary that is 50% less than center-based providers.

**Access to health resources:** 15 - 21% do not have health insurance

# Home-based Child Care Landscape: COVID-19

---

- Health concerns for themselves and their families
- Concern for the families they serve (health and mental health)
- Financial hardship
  - Closures/enrollment changes/parents' ability to pay
  - Access to public supports (unemployment)
- Access to cleaning supplies and PPE
- Lack of distinct, specific and timely information
- Feasibility and implementation of new protocols
- Food and housing insecurity

# Coping during COVID-19

---

- Disproportionately continuing to operate (2 out of 3 FCC providers operated through the pandemic):
  - Support families
  - Financial need
- Accessing public and private supports when possible
- Meeting the learning and emotional needs of families (from afar)
- Supporting one another
- Raising their voices and sharing their stories

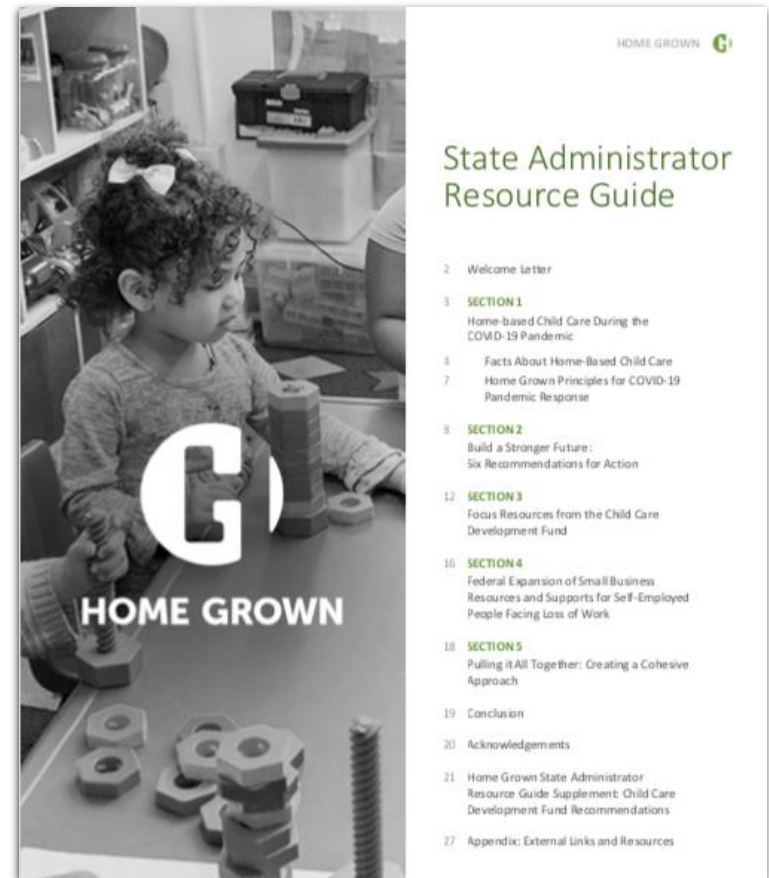
# Shifting Child Care Landscape: COVID-19

---

- Increased reliance on home-based care:
  - 69% continued to operate through the pandemic
  - Currently 50% of essential workers rely on relative care
- Shifting national narrative
- Meeting the needs of the moment:
  - Small groups with consistent caregiver
  - Prior familial relationships, deep attachment, and shared culture/language/child rearing practices
  - Flexibility in an uncertain employment environment

# State Leadership and Administrator Recommendations

- Bridge the chasm: provide effective **relief funding** to HBCC providers who are open and those that are closed
- Build lasting infrastructure: Create Comprehensive Home-Based Child Care **Networks**
- Meet **physical and mental health needs**: of children, families, and providers
- **Reform the Supply Chain**: Ensure providers can access the supplies they need to maintain a healthy and safe environment for children and families
- Maintain **family and provider-friendly policies**: implement reforms to ensure success during COVID-19 and beyond
- **Expand the formal constituency** of home-based child care: families, employers, communities, philanthropy, and society



# Responses and Resources

---

- Emergency Response – relief funding (philanthropy)
- CARES – Paycheck Protection Program (apps due June 30)
- CARES – Pandemic Unemployment Assistance
- CARES additions to Child Care Development Fund:
  - Financial supports (grants)
  - Reduction of co-payments
  - Subsidized care for essential workers
  - Onboarding licensed-exempt (payment & licensing)
  - Bonus pay
  - Coordinated supplies/PPE procurement



# Group activity

---

- How can New Jersey create and sustain a high quality, diverse and stable family child care system?
- What do we need to realize this vision?
- What can we can do right now to set New Jersey on a path to realize this vision?
- What opportunities exist in response to the pandemic to build trust, further develop relationships with providers and set New Jersey on this path?

3 areas for exploration: Provider and Family Well-Being, Health and Safety, and Financial Support.