

Education

Early Education in Newark

All 3- and 4-year-olds have access to free, full-day, high-quality preschool in Newark. Since 1999 when the existing state-funded preschool program began, tens of thousands of Newark children have benefitted from this strong start. With qualified early learning teachers, small class sizes and a strong curriculum, New Jersey's nationally recognized preschool model helps young children attain the skills necessary to be successful in kindergarten and beyond. To meet the local needs of families, Newark uses a "mixed-delivery system," meaning young children can attend preschool through Newark Public Schools, Head Start or a qualified private child care center in their neighborhoods.

Enrollment has trended up: in 2017, more than 7,000 children living in the city of Newark benefitted from state-funded preschool.

State-Funded Preschool Enrollment

	2012-13	2013-14	2014-15	2015-16	2016-17	% Change 13-17
Newark	6,404	6,541	6,180	6,821	7,024	10
Essex	9,961	10,017	9,664	10,206	10,484	5
New Jersey	51,860	51,924	51,232	51,934	51,371	-1

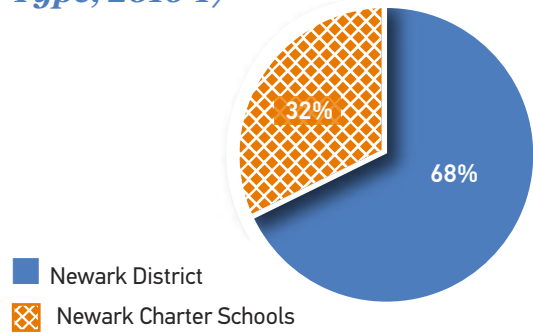
Kindergarten Enrollment

	2012-13	2013-14	2014-15	2015-16	2016-17	% Change 13-17
Newark District	2,767	1,505	1,137	2,508	2,423	-12
Newark Charter Schools	1,147	1,373	1,562	1,606	1,744	52
Newark Total	3,914	2,878	2,699	4,114	4,167	6
Essex	10,236	8,828	8,876	9,980	9,995	-2
New Jersey	95,101	92,018	91,570	91,703	90,740	-5

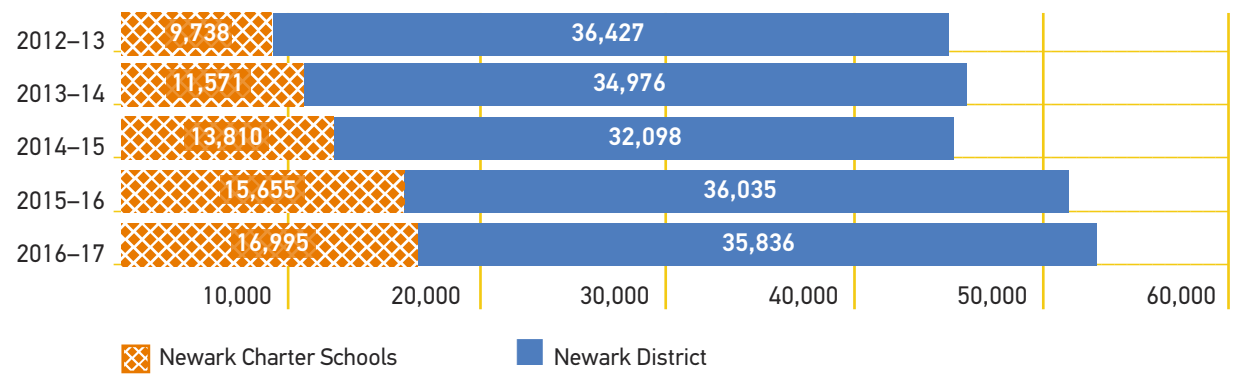
Pre-K-12 Total Enrollment, Newark

	2012-13	2013-14	2014-15	2015-16	2016-17	% Change 13-17
Newark District	36,427	34,976	32,098	36,035	35,836	-2
Newark Charter Schools	9,738	11,571	13,810	15,655	16,995	75
Newark Total	46,165	46,547	45,908	51,690	52,831	14

Percentage of Newark Students Enrolled in School by School Type, 2016-17



Pre-K-12 Total Enrollment, Newark

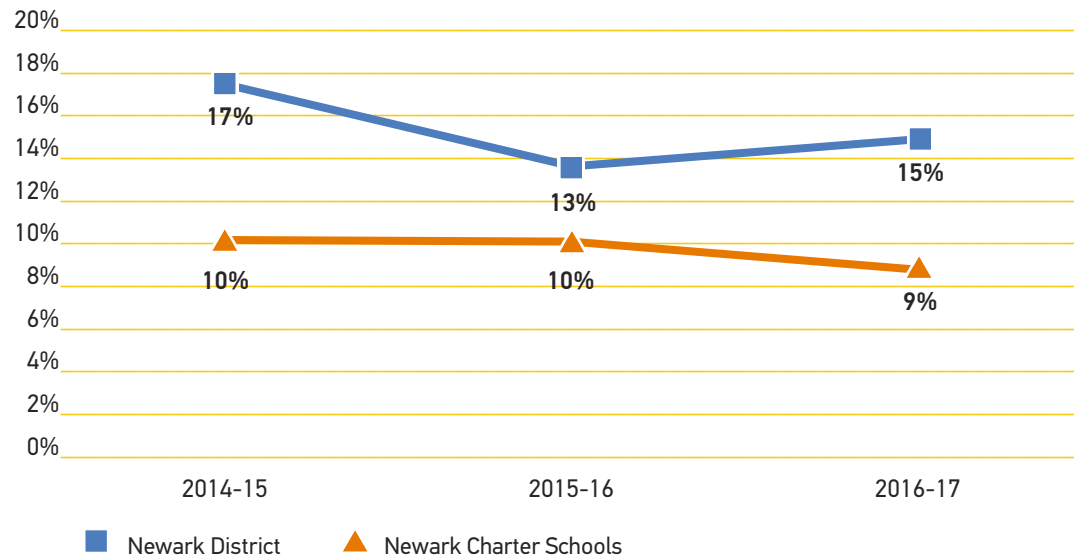


Special Education Enrollment, Ages 3-21

	2014-15	2015-16	2016-17
Newark District	5,725	5,400	5,812
Newark Charter Schools	1,339	1,511	1,561
Newark Total	7,064	6,911	7,373

Note: Includes public and non-public students

Special Education Enrollment, as a Percentage of Total Enrollment



Number of Homeless Students

	2013-14	2014-15	2015-16	2016-17	% Change 14-17
Newark Public Schools	585	664	580	683	17

Note: Data are cumulative as of June of each year.

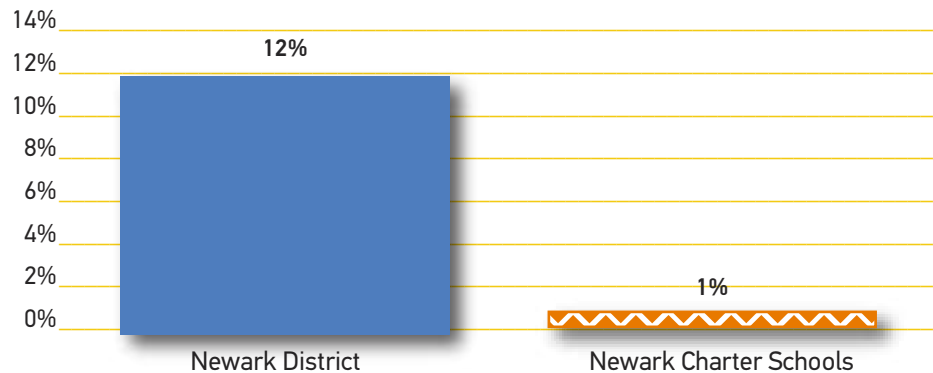
What is a Homeless Student?

A homeless student is defined as any youth lacking a regular and adequate nighttime residence. Included in this definition is a broad set of living arrangements — children living in hotels or motels, public places or sharing housing with other families due to a lack of suitable housing or financial stability. This definition was provided by the McKinney-Vento Homeless Assistance Act and amended through the Every Student Succeeds Act (ESSA) in 2016. Under the ESSA amendment, children awaiting foster care placement are no longer defined as homeless. Legally, the state is required to provide a number of services to homeless children including the appointment of a homeless student liaison who helps students and parents with enrollment, transportation arrangements and accessing services. For more information on homeless students, visit <http://nche.ed.gov/> or for more information on homeless students at the state level, visit <http://www.state.nj.us/education/students/homeless/>

Students with Limited English Proficiency

	2016-17
Newark District	4,221
Newark Charter Schools	192
Newark Total	4,413
Essex	7,527
New Jersey	72,257

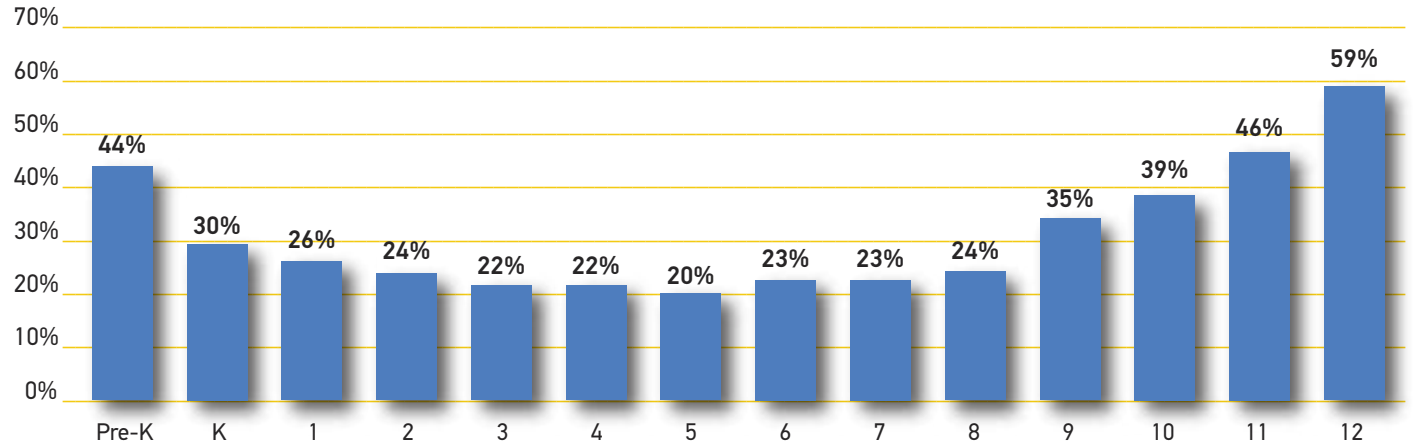
Percentage of Students with Limited English Proficiency



When is a Student “Limited English Proficient?”

The N.J. Department of Education uses the term limited English proficient (LEP) to describe students whose first language is other than English or who has difficulty reading, writing and understanding English. The State of New Jersey administers an annual survey to assess the languages spoken in students’ homes in an effort to identify LEP students. Children with limited English proficiency may require additional services to allow them to be successful in the district’s academic program. For the 2016-17 school year, 4,221 LEP students attended Newark Public Schools, compared to 192 LEP students in the city’s charter schools.

Percentage of NPS Students Chronically Absent by Grade, 2016-17



Chronic Absenteeism in Newark

Newark high schools play an essential role in building the next generation of young minds for college and career readiness. Yet, high achievement may be unattainable if students do not attend class regularly. In grades K-8, the highest rate of chronically absent students occurred in kindergarten, with 30 percent of students missing too much school. Preschool students also showed high rates of chronic absenteeism at 44 percent. Among high school students, ninth graders had the lowest rate of chronic

absenteeism, with 35 percent of students absent. High school seniors posted a 59 percent chronic absenteeism rate, the highest out of all grades and nearly double the kindergarten absenteeism rate. Students who miss 10 percent of school days (about two days a month) are more likely to fall behind in school and not graduate on time. For more information on chronic absenteeism in Newark’s high schools, read ACNJ’s *Showing Up Matters: A Look at Absenteeism Inside Newark’s High Schools* on our website, acnj.org.

School Violence Incidents

	2012-13					2015-16				
	Violence	Vandalism	Weapons	Substances	HIB*	Violence	Vandalism	Weapons	Substances	HIB*
Newark District	197	81	39	30	172	194	58	35	37	72
Newark Charter Schools	100	11	10	4	63	346	32	18	26	30
Newark Total	297	92	49	34	235	540	90	53	63	102
Essex	814	190	127	197	500	1,026	177	118	236	744
New Jersey	7,895	1,751	1,047	3,358	7,740	8,261	1,423	1,000	3,010	5,995

*Harassment, Intimidation and Bullying incidents

7 Education

Newark District English Language Arts PARCC Results

	2015-16					2016-17				
	% Met/ Exceeded Expectations	# Registered	# Tested	# Not Tested	% Not Tested	% Met/ Exceeded Expectations	# Registered	# Tested	# Not Tested	% Not Tested
3rd Grade										
Newark District	24	2,796	2,714	82	3	27	2,727	2,659	68	2
New Jersey	48	102,560	99,046	3,514	3	50	101,159	98,884	2,275	2
4th Grade										
Newark District	27	2,780	2,698	82	3	30	2,731	2,673	58	2
New Jersey	54	101,013	96,823	4,190	4	56	103,051	100,288	2,763	3
7th Grade										
Newark District	32	2,491	2,362	129	5	36	2,503	2,431	72	3
New Jersey	56	101,995	95,979	6,016	6	59	102,648	98,926	3,722	4
10th Grade										
Newark District	26	2,117	1,697	420	20	27	2,240	1,926	314	14
New Jersey	44	97,547	84,921	12,626	13	46	97,244	85,598	11,646	12
11th Grade										
Newark District	30	1,968	1,598	370	19	28	2,139	1,675	464	22
New Jersey	40	89,371	68,876	20,495	23	38	88,594	68,568	20,026	23

Newark District Math PARCC Results

	2015-16					2016-17				
	% Met/ Exceeded Expectations	# Registered	# Tested	# Not Tested	% Not Tested	% Met/ Exceeded Expectations	# Registered	# Tested	# Not Tested	% Not Tested
3rd Grade										
Newark District	28	2,857	2,750	107	4	35	2,812	2,734	78	3
New Jersey	52	103,393	99,847	3,546	3	53	102,212	99,991	2,221	2
4th Grade										
Newark District	23	2,850	2,760	90	3	26	2,816	2,744	72	3
New Jersey	47	101,832	97,620	4,212	4	47	104,071	101,323	2,748	3
7th Grade										
Newark District	17	2,564	2,447	117	5	20	2,597	2,515	82	3
New Jersey	39	99,030	93,114	5,916	6	40	99,701	95,955	3,746	4
Algebra I										
Newark District	25	2,471	2,050	421	17	21	2,347	2,165	182	8
New Jersey	41	115,282	105,998	9,284	8	42*	115,108	110,215	4,893	4
Geometry										
Newark District	6	1,676	1,322	354	21	10	1,970	1,814	156	8
New Jersey	27	95,821	84,549	11,272	12	30	96,701	88,079	8,622	9
Algebra II										
Newark District	7	2,047	1,539	508	25	7	2,039	1,706	333	16
New Jersey	25	92,404	74,549	17,855	19	27	92,835	74,931	17,904	19

*This figure reflects the % Met/Exceeded Expectations reported on the N.J. Department of Education's state assessment report PDFs.

Newark Charter English Language Arts PARCC Results

	2015-16		2016-17	
	% Met/ Exceeded Expectations	# Tested	% Met/ Exceeded Expectations	# Tested
3rd Grade				
Newark Charter	47	1,375	51	1,501
New Jersey	48	99,046	50	98,884
4th Grade				
Newark Charter	55	1,197	57	1,395
New Jersey	54	96,823	56	100,288
7th Grade				
Newark Charter	59	1,131	40	1,263
New Jersey	56	95,979	59	98,926
10th Grade				
Newark Charter	34	694	37	862
New Jersey	44	84,921	46	85,598
11th Grade				
Newark Charter	47	573	47	590
New Jersey	40	68,876	38	68,568

*Select charter schools have been suppressed and therefore are not included in weighted averages

Newark Charter Math PARCC Results

	2015-16		2016-17	
	% Met/ Exceeded Expectations	# Tested	% Met/ Exceeded Expectations	# Tested
3rd Grade				
Newark Charter	54	1,375	64	1,415
New Jersey	52	99,847	53	99,991
4th Grade				
Newark Charter	47	1,194	45	1,396
New Jersey	47	97,620	47	101,323
7th Grade				
Newark Charter	43	1,131	42	1,191
New Jersey	39	93,114	40	95,955
Algebra I				
Newark Charter	39	1,133	32	1,631
New Jersey	41	105,998	42**	110,215
Geometry				
Newark Charter	15	690	21	861
New Jersey	27	84,549	30	88,079
Algebra II				
Newark Charter	7	431	10	499
New Jersey	25	74,549	27	74,931

*Select charter schools have been suppressed and therefore are not included in weighted averages

**This figure reflects the % Met/Exceeded Expectations reported on the N.J. Department of Education's state assessment report PDFs.

High School Graduation Rates

	2011-12	2012-13	2013-14	2014-15	2015-16
Newark District	69	68	69	70	73
New Jersey	86	88	89	90	90

Average SAT Score, by High School

	2014-15			2015-16		
	Math	Critical Reading	Participation Rate	Math	Critical Reading	Participation Rate
American History High School	426	395	100	446	451	67
Arts High School	397	401	90	460	473	75
Bard Early College High School	453	436	94	493	494	71
Barringer Arts High School	326	312	100	372	376	76
Central High School	341	330	81	387	392	47
East Side High School	404	374	62	426	419	48
Fast Track Success Academy	N/A	N/A	N/A	S	S	9
Malcolm X Shabazz High School	353	343	53	392	398	55
Marion P. Thomas Charter School	340	341	68	402	422	44
Newark Prep Charter School	N/A	N/A	N/A	433	446	100
Newark Vocational High School	344	340	18	443	456	13
North Star Academy Charter School	525	492	100	571	571	82
People's Preparatory Charter School	395	373	99	431	452	28
Paulo Freire Charter School	N/A	N/A	N/A	417	438	72
Science Park High School	586	530	100	590	570	87
Technology High School	462	415	93	486	478	70
University High School	448	421	89	481	466	67
Weequahic High School	368	355	46	380	389	46
New Jersey Average	518	496	79	538	537	58

Note: S indicates that data does not meet suppression rules; N/A indicates data unavailable. Newark Vocational High School and Newark Early College High School are both housed within West Side High.

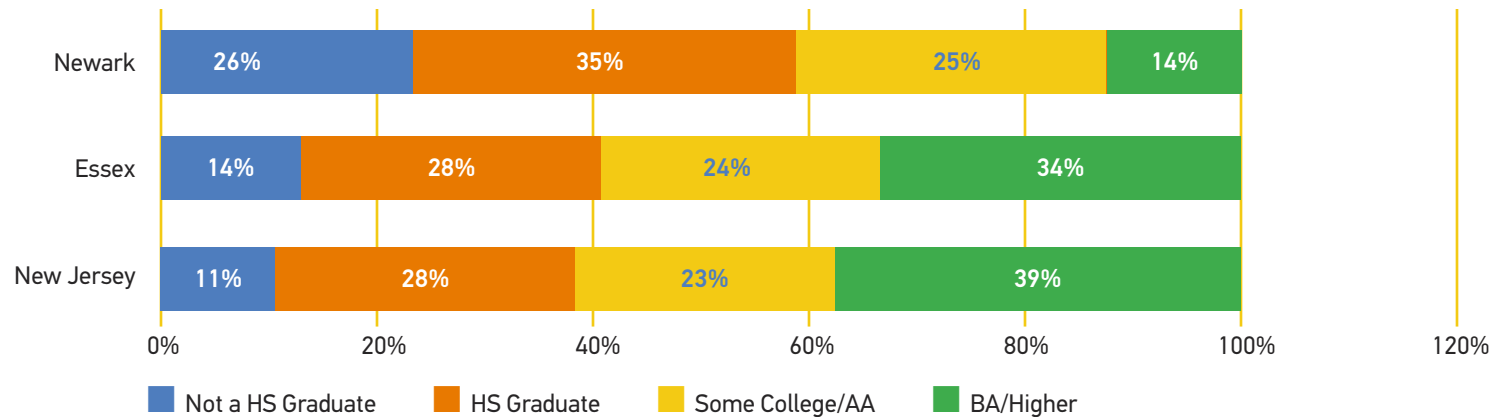
*Percentage of Graduates Enrolled in a Post-Secondary Institution, 2015-16**

	% Schoolwide	% Economically Disadvantaged	% Students with Disabilities
American History High School	74	74	S
Arts High School	75	76	S
Bard Early College High School	76	72	S
Barringer Arts High School	48	51	S
Barringer S.T.E.A.M	46	46	24
Central High School	51	49	25
East Side High School	57	59	51
Fast Track Success Academy	S	S	S
Malcom X Shabazz High School	36	36	26
Marion P. Thomas Charter School	55	53	S
Newark Early College High School	58	60	S
Newark Leadership Academy	S	S	S
Newark Vocational High School	36	36	27
North Star Academy Charter School	94	96	S
People's Preparatory Charter School	79	79	S
Science Park High School	82	85	S
TEAM Academy Charter School	83	84	S
Technology High School	78	76	S
University High School	78	73	S
Weequahic High School	37	36	S

* Post-secondary institutions include 2-year or 4-year institutions.

Note: S indicates that data does not meet suppression rules. Newark Vocational High School and Newark Early College High School are both housed within West Side High.

Highest Education Levels for People Ages 25+, Newark vs. Essex vs. NJ, 2016



Data Sources and Technical Notes:

State-Funded Preschool Enrollments, 2012-13 through 2016-17. Number of three- and four-year-old students enrolled in half- and full-day New Jersey Department of Education-approved preschools, operated both in-district and in community centers, as reported by the N.J. Department of Education. Excludes children enrolled in Head Start or other federally-funded programs that do not receive any state aid.

Kindergarten Enrollment, 2012-13 through 2016-17. As reported by the N.J. Department of Education, Enrollment Data. Includes both full and half day programs. Data include both traditional district and charter schools.

Pre-K – 12 Total Enrollment, Newark, 2012-13 through 2016-17. As reported by the N.J. Department of Education, Enrollment Data. Data include both traditional district and charter schools.

Special Education Enrollment, Ages 3-21, 2014-15 through 2016-17. As reported by the N.J. Department of Education. Number of students who are classified, ages 3-21. Data include both traditional district schools and charter schools and public and non-public students. Charter totals may be higher due to suppression of districts with fewer than 10 students.

Special Education Enrollment, as a Percentage of Total Enrollment, 2014-15 through 2016-17. As reported by the N.J. Department of Education. Percentage of total enrollment of students who are classified, ages 3-21. Special Education counts include both traditional district schools and charter schools and public and non-public students. Charter figures may differ due to suppression of districts with fewer than 10 students. Total enrollment data based on October general education enrollment data for each year.

Number of Homeless Students, 2013-14 through 2016-17. As reported by Newark Public Schools. Data are as of June for each school year listed and do not include charter schools. Represents any student identified as homeless during the given school year.

Students with Limited English Proficiency, 2016-17. As reported by the N.J. Department of Education, October enrollment counts.

Percentage of Students with Limited English Proficiency, 2016-17. As reported by the N.J. Department of Education, October enrollment counts.

Percentage of NPS Students Chronically Absent by Grade, 2016-17. Data for grades K-12. As reported by Newark Public Schools, June 2017 Month Attendance Report. Data do not include charter schools.

School Violence Incidents, 2012-13, 2015-16. As reported by the NJ Department of Education, Commissioner of Education’s Report on Violence, Vandalism and Substance Abuse in New Jersey Public Schools. More than one type of offense may be reported for a single incident.

Newark English Language Arts and Math PARCC Results, Grades 3, 4, 7, 10, 11, and Algebra I, Geometry, and Algebra II Math Exams, 2015-16 through 2016-17. As reported by the N.J. Department of Education, New Jersey Statewide Assessment Reports for each year. Includes general education students, special education students, and foreign-language students. Data include both traditional district as well as charter schools. Percentage meeting or exceeding standards are those students scoring Level 4 or Level 5. Data suppressed in some instances to suppressed students’ confidentiality. The number of untested students refers to all students who did not receive a valid score. Charter data are averages and or totals from individual charter schools; charter data are weighted and calculated by ACNJ. Due to suppressed data in some charter schools, the percent not tested was not calculated.

High School Graduation Rates, 2011-12 through 2015-16. As reported by the N.J. Department of Education, Adjusted Cohort Graduation Rate Data. Data are not available prior to the 2010-11 school year. In 2011 the Department of Education changed the way that graduation rates are calculated to the 4-year adjusted cohort graduation rate.

Average SAT Score, by High School, 2014-15 through 2015-16. As reported by the N.J. Department of Education, New Jersey School Performance Report data.

Percentage of Graduates Enrolled in a Post-Secondary Institution, 2015-16. As reported by the N.J. Department of Education, N.J. School Performance Report Data. These data reflect the percentage of the 2014 high school graduation class that were enrolled in post-secondary institutions in October 2016. The data are pulled from the National Student Clearinghouse. Students who enroll in post-secondary institutions outside of the United States are not included. Data for some categories unavailable.

Highest Education Level for People Ages 25+, Newark, Essex, N.J., 2016. As reported by the U.S. Census Bureau, American Community Survey chart B15002.