

# Education

## Early Education in Newark

All three- and four-year-olds have access to free, full-day, high-quality preschool in Newark. Since 1999 when the existing state-funded preschool program began, tens of thousands of Newark children have benefited from this strong start. With qualified early learning teachers, small class sizes and a strong curriculum, New Jersey’s nationally recognized preschool model helps kids attain the skills necessary to be successful in kindergarten and beyond. To meet the local needs of families, Newark uses a “mixed-delivery system,” meaning young children can attend preschool through Newark Public Schools, Head Start, or qualified private child care centers in their neighborhoods.

Enrollment has trended up; in 2016, more than 6,800 children living in the city of Newark benefitted from state-funded preschool.

### State-Funded Preschool Enrollment

	2011-12	2012-13	2013-14	2014-15	2015-16	% Change 12-16
Newark	6,235	6,404	6,541	6,180	6,821	9
Essex	9,656	9,961	10,017	9,664	10,206	6
New Jersey	51,642	51,860	51,924	51,232	51,934	1

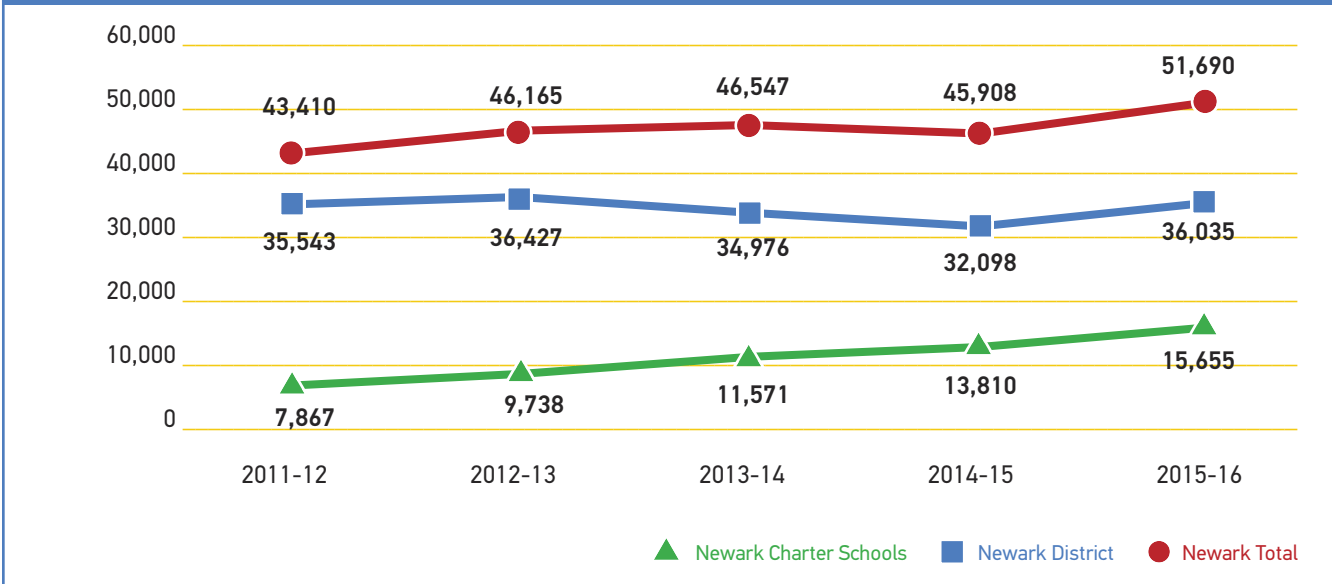
### Kindergarten Enrollment

	2011-12	2012-13	2013-14	2014-15	2015-16	% Change 12-16
Newark District	2,627	2,767	1,505	1,137	2,508	-5
Newark Charter Schools	1,007	1,147	1,373	1,562	1,606	59
Newark Total	3,634	3,914	2,878	2,699	4,114	13
Essex	9,765	10,236	8,828	8,876	9,980	2
New Jersey	91,859	95,101	92,018	91,570	91,703	0

### Pre-K-12 Total Enrollment, Newark

	2011-12	2012-13	2013-14	2014-15	2015-16	% Change 12-16
Newark District	35,543	36,427	34,976	32,098	36,035	1
Newark Charter Schools	7,867	9,738	11,571	13,810	15,655	99
Newark Total	43,410	46,165	46,547	45,908	51,690	19

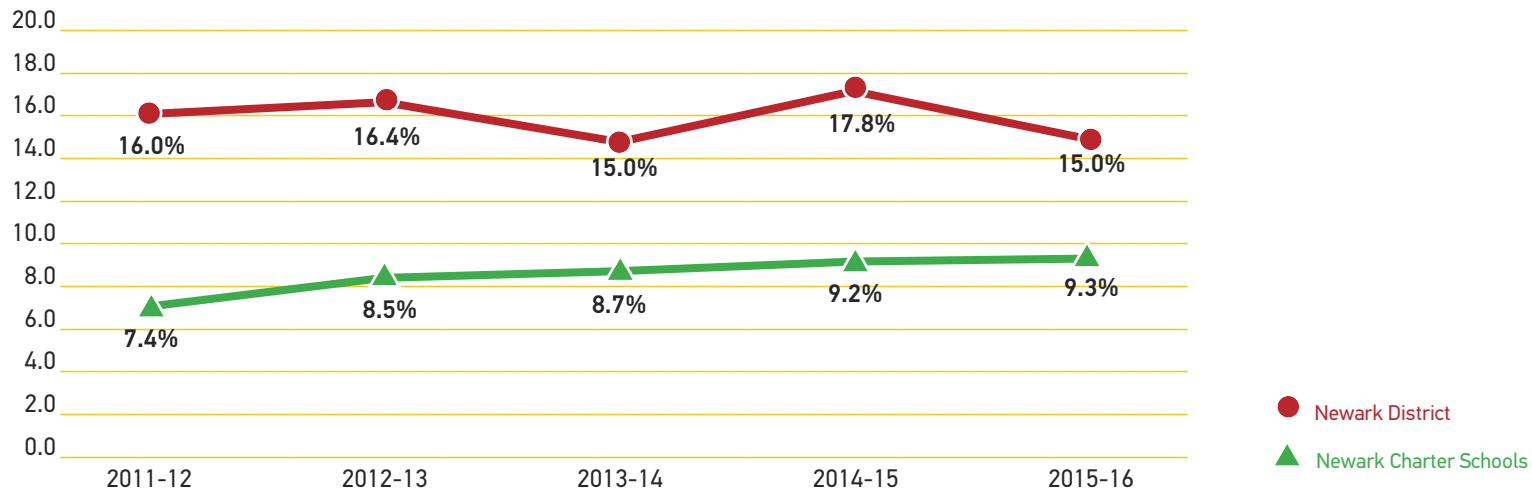
**Pre-K-12 Total Enrollment, Newark**



**Special Education Enrollment**

	2011-12	2012-13	2013-14	2014-15	2015-16
Newark District	5,688	5,963	5,246	5,725	5,400
Newark Charter Schools	582	823	1,012	1,264	1,462
Newark Total	6,270	6,786	6,258	6,989	6,862

*Newark Special Education Enrollment, as a Percentage of Total Enrollment*



*Number of Homeless Students*

	2013-14	2014-15	2015-16	% Change 14-16
Newark	575	416	483	-16
Essex	1,113	669	862	-23
New Jersey	10,303	8,412	10,252	0

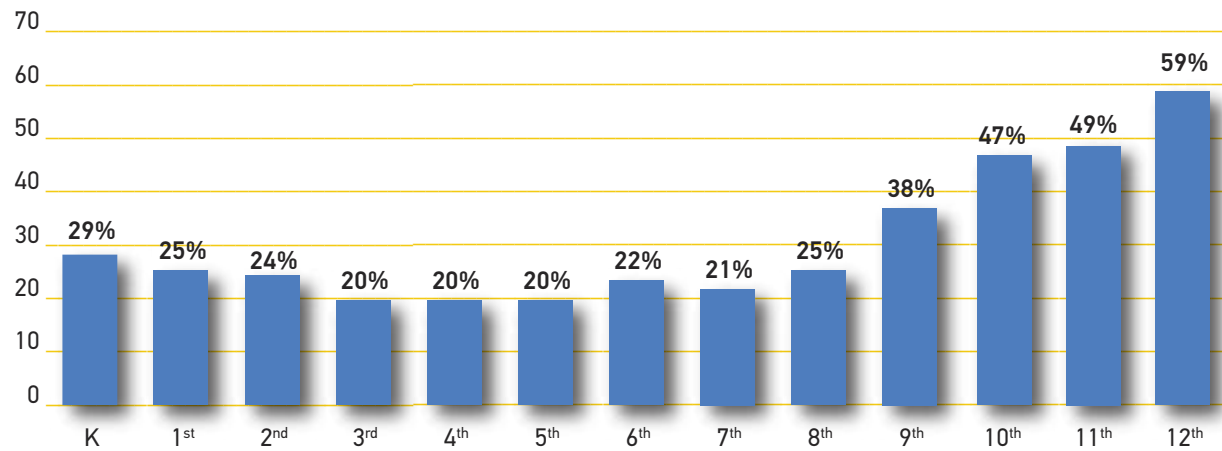
**What is a Homeless Student?**

A homeless student is defined as any youth lacking a regular and adequate nighttime residence. Included in this definition is a broad set of living arrangements — children living in hotels or motels, public places, or sharing housing with other families due to a lack of suitable housing or financial stability. This definition was provided by the McKinney-Vento Homeless Assistance Act and amended through the Every Student Succeeds Act (ESSA) in 2016. Under the ESSA amendment, children awaiting foster care placement are no longer defined as homeless. Legally, the state is required to provide a number of services to homeless children including the appointment of a homeless student liaison who helps students and parents with enrollment, transportation arrangements, and accessing services. For more information on homeless students, visit <http://nche.ed.gov/> or for more information on homeless students at the state level, visit <http://www.state.nj.us/education/students/homeless/>

*Percentage of Newark District School Students Chronically Absent, by School Year*

	2013-14	2014-15	2015-16
Grades K-8	22	22	23
Grades 9-12 (High School)	51	52	48

*Percentage of Newark District School Students Chronically Absent by Grade, 2015-16*



## Chronic Absenteeism in Newark

Based on a 180-day school year, any student who misses 18 days or more per year — or about two days per month — is considered chronically absent. During the 2015-16 school year, more than 20 percent of students in grades kindergarten through eight were chronically absent, while close to 50 percent of high school students missed too much school. In Newark, chronic absenteeism has many causes, including chronic health issues for both children and parents, transportation barriers and the lack of a support network. School administrators, parents, teachers and other school staff across the nation and in Newark have begun to institute policies to encourage student attendance and reduce absenteeism. To learn more about chronic absenteeism throughout the state, visit <https://acnj.org/issues/school-attendance/>.

## Partnership for Assessment of Readiness for College and Careers (PARCC) Scores and Graduation Requirements

Beginning this year and over the next five years, the State of New Jersey is rolling out new graduation requirements related to PARCC assessments. For more information on graduation pathways for the classes of 2017 and beyond, visit the New Jersey Department of Education's website: <http://www.state.nj.us/education/assessment/parents/GradReq.pdf>

### *Newark District English Language Arts PARCC Results, 2015-16*

3rd Grade	% Met/Exceeded Expectations	# Registered	# Tested	# Not Tested	% Not Tested
Newark District	24	2,796	2,714	82	3
New Jersey	48	102,560	99,046	3,514	3
4th Grade					
Newark District	27	2,780	2,698	82	3
New Jersey	54	101,013	96,823	4,190	4
7th Grade					
Newark District	32	2,491	2,362	129	5
New Jersey	56	101,995	95,979	6,016	6
10th Grade					
Newark District	26	2,117	1,697	420	20
New Jersey	44	97,547	84,921	12,626	13
11th Grade					
Newark District	30	1,968	1,598	370	19
New Jersey	40	89,371	68,876	20,495	23

### *Newark Charter English Language Arts PARCC Results 2015-16*

3rd Grade	% Met/Exceeded Expectations	# Tested
Newark Charter	47	1,375
New Jersey	48	99,046
4th Grade		
Newark Charter	55	1,197
New Jersey	54	96,823
7th Grade		
Newark Charter	59	1,131
New Jersey	56	95,979
10th Grade		
Newark Charter	34	694
New Jersey	44	84,921
11th Grade		
Newark Charter	47	573
New Jersey	40	68,876

*Newark District Math  
PARCC Results, 2015-16*

	% Met/Exceeded Expectations	# Registered	# Tested	# Not Tested	% Not Tested
<b>3rd Grade</b>					
Newark District	28	2,857	2,750	107	4
New Jersey	52	103,393	99,847	3,546	3
<b>4th Grade</b>					
Newark District	23	2,850	2,760	90	3
New Jersey	47	101,832	97,620	4,212	4
<b>7th Grade</b>					
Newark District	17	2,564	2,447	117	5
New Jersey	39	99,030	93,114	5,916	6
<b>Algebra I</b>					
Newark District	25	2,471	2,050	421	17
New Jersey	41	115,282	105,998	9,284	8
<b>Geometry</b>					
Newark District	6	1,676	1,322	354	21
New Jersey	27	95,821	84,549	11,272	12
<b>Algebra II</b>					
Newark District	7	2,047	1,539	508	25
New Jersey	25	92,404	74,549	17,855	19

*Newark Charter Math  
PARCC Results 2015-16*

	% Met/Exceeded Expectations	# Tested
<b>3rd Grade</b>		
Newark Charter	54	1,375
New Jersey	52	99,847
<b>4th Grade</b>		
Newark Charter	47	1,194
New Jersey	47	97,620
<b>7th Grade</b>		
Newark Charter	43	1,131
New Jersey	39	93,114
<b>Algebra I</b>		
Newark Charter	39	1,133
New Jersey	41	105,998
<b>Geometry</b>		
Newark Charter	15	690
New Jersey	27	84,549
<b>Algebra II</b>		
Newark Charter	7	431
New Jersey	25	74,549

*High School Graduation Rates*

	2011-12	2012-13	2013-14	2014-15	2015-16
Newark District	69	68	69	70	73
New Jersey	86	88	89	90	90

*Average SAT Score, by High School*

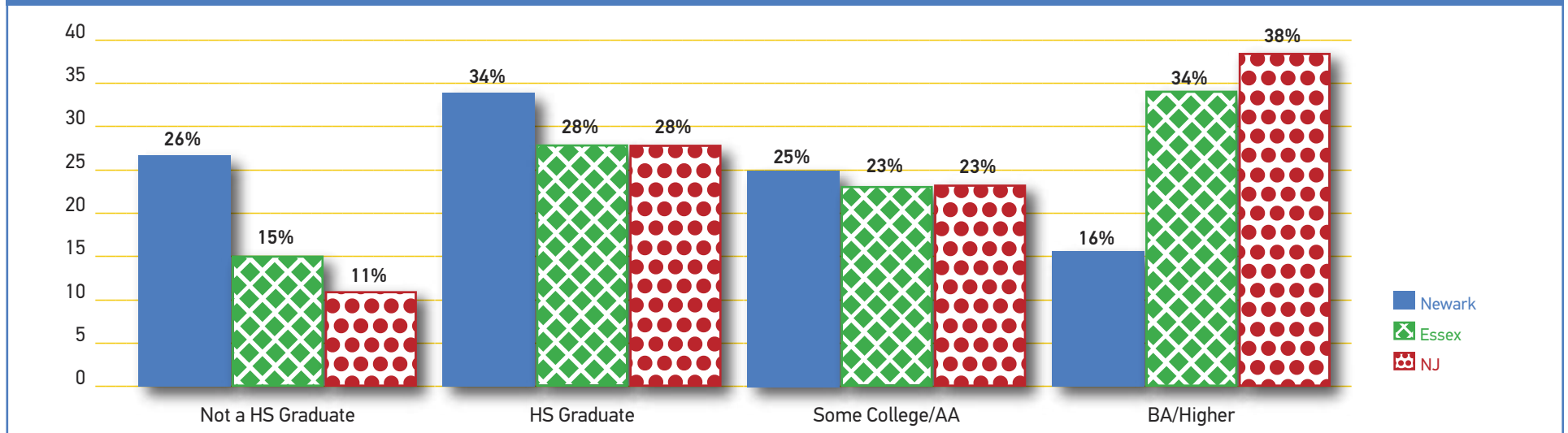
	2013-14			2014-15		
	Math	Critical Reading	Percentage Participation	Math	Critical Reading	Percentage Participation
American History High School	403	409	100	426	395	100
Arts High School	417	410	100	397	401	90
Bard Early College High School	426	429	93	453	436	94
Barringer Arts High School	N/A	N/A	N/A	326	312	100
Central High School	372	351	63	341	330	81
East Side High School	431	396	76	404	374	62
Malcolm X Shabazz High School	336	325	100	353	343	53
Marion P. Thomas Charter School	N/A	N/A	N/A	340	341	68
Newark Vocational High School	358	336	56	344	340	18
North Star Academy Charter School	551	503	100	525	492	100
People's Preparatory Charter School	N/A	N/A	N/A	395	373	99
Science Park High School	564	519	100	586	530	100
Technology High School	465	427	100	462	415	93
University High School	466	439	97	448	421	89
Weequahic High School	345	330	78	368	355	46
<b>New Jersey Average</b>	<b>521</b>	<b>496</b>	<b>76</b>	<b>518</b>	<b>496</b>	<b>79</b>

Percentage of Students Enrolled in a Post-Secondary Institution, 2014-15\*

	% Schoolwide	% Low-Income	% Students with Disabilities
American History High School	64	64	N/A
Arts High School	77	76	N/A
Barringer Arts High School	46	46	36
Central High School	58	58	N/A
East Side High School	54	54	32
Malcom X Shabazz High School	41	41	27
Newark Vocational High School	59	59	N/A
North Star Academy	94	91	N/A
Science Park High School	84	84	N/A
TEAM Academy Charter School	90	90	N/A
Technology High School	81	81	N/A
University High School	81	81	N/A
Weequahic High School	39	40	N/A

\*Post-secondary institutions include 2-year or 4-year institutions.

Highest Education Levels for People Ages 25+, Newark vs. Essex vs. NJ, 2015





### ■ Data Sources and Technical Notes:

**State-Funded Preschool Enrollments, 2011-12 through 2015-16.** Number of three and four year old students enrolled in half- and full-day New Jersey Department of Education-approved preschools, operated both in-district and in community centers, as reported by the N.J. Department of Education. Excludes children enrolled in Head Start or other federally-funded programs that do not receive any state aid.

**Kindergarten Enrollment, 2011-12 through 2015-16.** As reported by the N.J. Department of Education, Enrollment Data. Includes both full- and half-day programs. Data include both traditional district and charter schools.

**Pre-K-12 Total Enrollment, Newark, 2011-12 through 2015-16.** As reported by the N.J. Department of Education, Enrollment Data. Data include both traditional district and charter schools.

**Special Education Enrollment, 2011-12 through 2015-16.** As reported by the N.J. Department of Education. Number of students who are classified, ages 3-21. Data include both traditional district schools and charter schools. Charter totals may differ due to suppression of districts with fewer than 10 students.

**Newark Special Education Enrollment, as a Percentage of Total Enrollment, 2011-12 through 2015-16.** As reported by the N.J. Department of Education. Percentage of total enrollment of students who are classified, ages 3-21. Data include both traditional district and charter schools. Charter figures may differ due to suppression of districts with fewer than 10 students.

**Number of Homeless Students, 2013-14 through 2015-16.** As reported by the N.J. Department of Education, Homeless Survey data. Data include traditional district schools as well as charter schools. Please note that due to a change in the way in which the Department of Education collects data, previous data are not comparable and are not available prior to 2013-14.

**Percentage of Newark District School Students Chronically Absent by School Year, 2013-14 through 2015-16.** As reported by Newark Public Schools, Superintendent Report, October 2016. Excludes students enrolled in school for fewer than 20 days, students attending pre-K providers, and students grades 9-12 attending institutions that do not grant high school diplomas. Does not include charter schools.

**Percentage of Newark District School Students Chronically Absent by Grade, 2015-16.** As reported by Newark Public Schools, Superintendent Report, October 2016. Excludes students enrolled in school for fewer than 20 days, students attending pre-K providers, and students grades 9-12 attending institutions that do not grant high school diplomas. Does not include charter schools.

**Newark English Language Arts and Math PARCC Results, Grades 3, 4, 7, 10, 11, and Algebra I, Geometry, and Algebra II Math Exams, 2015-16.** As reported by the N.J. Department of Education, New Jersey Statewide Assessment Reports for each year. Includes general education students, special education students, and foreign-language students. Data include both traditional district as well as charter schools. Percentage meeting or exceeding expectations are those students scoring Level 4 or Level 5. Data suppressed in some instances to suppressed students confidentiality. The number of untested students refers to all students who did not receive a valid score. Charter data are averages and or totals from individual charter schools; charter data are weighted and calculated by ACNJ. Due to suppressed data in some charter schools, the percent not tested was not calculated.

**High School Graduation Rates, 2011-12 through 2015-16.** As reported by the N.J. Department of Education, Adjusted Cohort Graduation Rate Data. Data are not available prior to the 2010-11 school year. In 2011 the Department of Education changed the way that graduation rates are calculated to the 4-year adjusted cohort graduation rate. Does not include charter schools.

**Average SAT Score, by High School, 2013-14 through 2014-15.** As reported by the N.J. Department of Education, New Jersey School Performance Report data. Data not available for certain schools.

**Percentage of Students Enrolled in a Post-Secondary Institution, 2014-15.** As reported by the N.J. Department of Education, N.J. School Performance Report Data. These data reflect the percentage of the 2014 high school graduation class that were enrolled in post-secondary institutions in October 2015. The data are pulled from the National Student Clearinghouse. Students who enroll in post-secondary institutions outside of the United States are not included. Data for some categories unavailable.

**Highest Education Level for People Ages 25+, Newark, Essex, N.J., 2015.** As reported by the U.S. Census Bureau, American Community Survey chart B15002.