

Teens

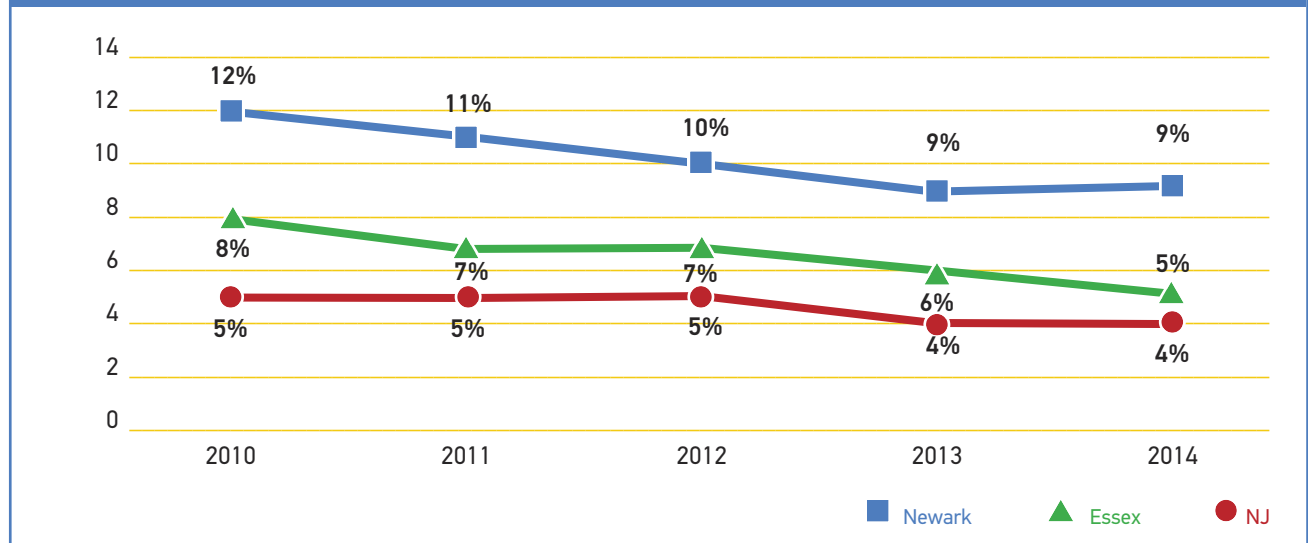
Data Trends for Teens

Teens in Newark posted several positive trends in a variety of indicators. According to the most recent data, teen births, the number of youth diagnosed with a sexually transmitted infection (STI) and juvenile arrests have all decreased. The overall number of juveniles in detention for both the city of Newark and Essex County overall also declined, though for Newark, the rate was not as dramatic as in previous years. Male and African American youth continue to comprise the majority of Newark's juvenile detention admissions.

Births to Teens (Ages 15-19)

	2010	2011	2012	2013	2014	% Change 10-14
Newark	487	464	446	394	358	-26
Essex	793	757	700	617	559	-30
New Jersey	5,735	5,285	4,719	4,216	3,687	-36

Births to Teens as a Percentage of All Births



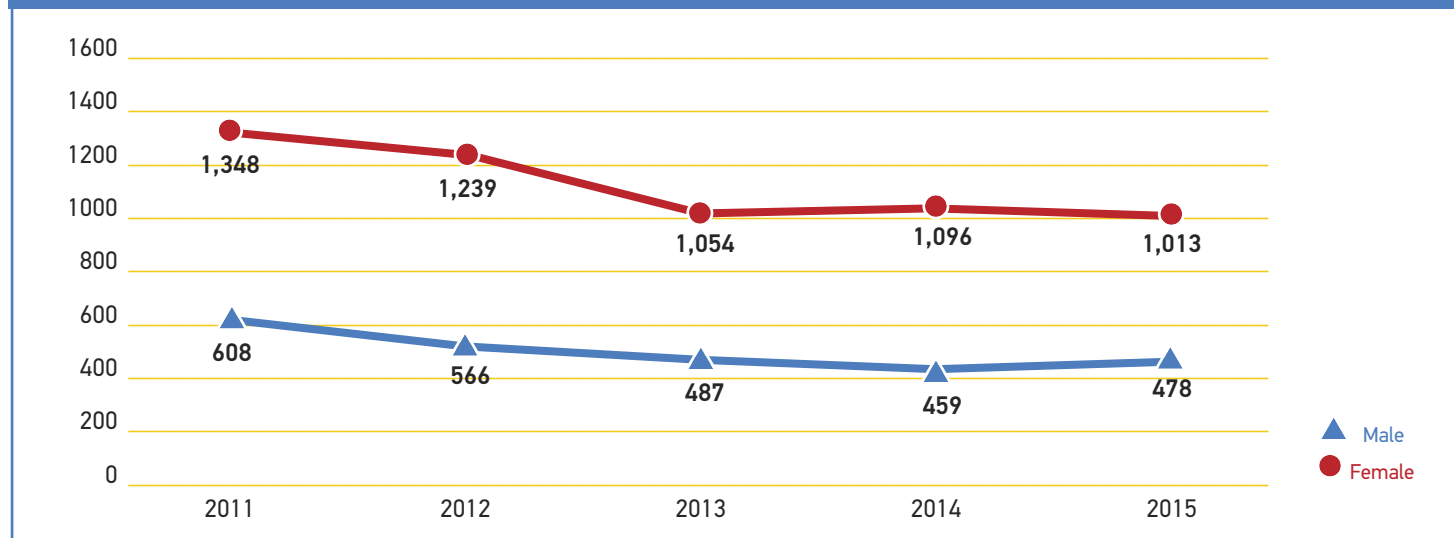
Teen Deaths (Ages 15-19)

	2010	2011	2012	2013	2014
Newark	19	10	15	13	15
Essex	34	22	27	26	31
New Jersey	209	208	210	191	191

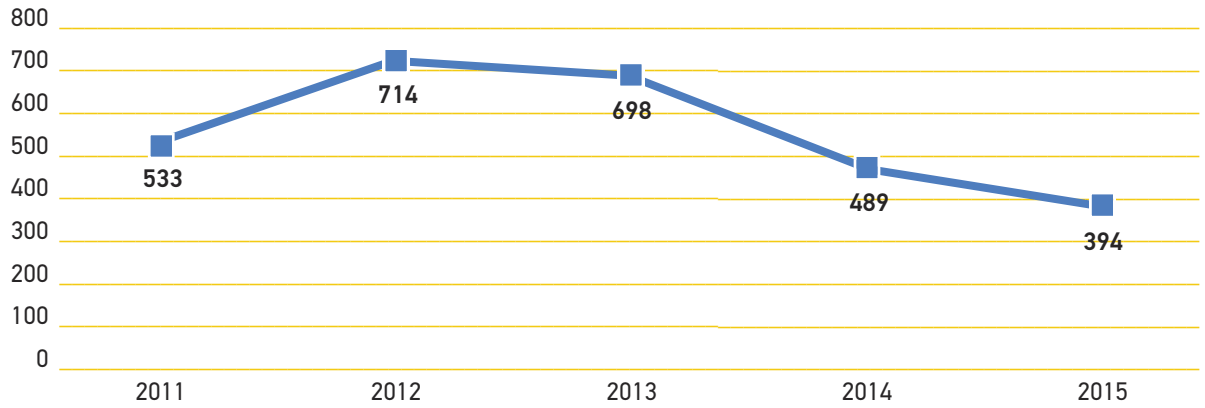
Youth Ages 16-20 Diagnosed with a Sexually Transmitted Infection, By Gender

	2011		2012		2013		2014		2015		% Change 11-15	
	Male	Female	Male	Female	Male	Female	Male	Female	Male	Female	Male	Female
Newark	608	1,348	566	1,239	487	1,054	459	1,096	478	1,013	-21	-25
Essex	932	2,213	856	2,078	776	1,767	744	1,790	798	1,814	-14	-18
New Jersey	3,290	10,532	3,004	9,773	2,943	9,340	2,921	8,990	3,230	9,124	-2	-13

Newark Youth, Ages 16-20, Diagnosed with a Sexually Transmitted Infection



Newark Juvenile Arrests



Juvenile Arrests

	2011	2012	2013	2014	2015 *	% Change 11-15
Newark	533	714	698	489	394	-26
Essex	2,679	2,721	2,622	2,440	N/A	N/A
New Jersey	34,140	29,961	24,795	24,306	N/A	N/A

*Please note that 2015 data only reported for Newark

Newark Annual Admissions to Detention

	2011	2012	2013	2014	2015	% Change 11-15
Total Admissions:	574	540	555	429	420	-27
By Gender:						
Males	537	485	486	377	379	-29
Females	37	55	69	52	41	11
By Race:						
African American	515	481	495	381	390	-24
Caucasian	3	0	1	1	1	-67
Hispanic	56	59	59	47	29	-48
Newark's Percentage of Essex Admissions	62	62	63	57	60	

Essex County Annual Admissions to Detention

	2011	2012	2013	2014	2015	% Change 11-15
	919	874	882	753	703	-24

What is the Juvenile Detention Alternative Initiative?

New Jersey's Juvenile Detention Alternatives Initiative (JDAI), was formed in 2004 with the support and leadership of the Annie E. Casey Foundation and is managed by the state's Juvenile Justice Commission (JJC). Since the program's inception, JDAI has resulted in a dramatic decrease in detention populations throughout New Jersey without risk to public safety. JDAI fosters a fundamental shift in the way law enforcement, prosecutors, judges, and public defenders handle juvenile crime cases by moving the focus from locking kids up to returning them to their communities and addressing the issues that led to criminal behavior. Detention centers are reserved only for more serious youth offenders. JDAI has helped reduce costs considerably, due to the reduction in daily population in detention and subsequent closure of many county detention centers. To learn more about the Juvenile Justice Commission and JDAI, visit <http://www.nj.gov/oag/jjc/index.html> or check out ACNJ's *Kids Count Special Report: Juvenile Justice*: http://acnj.org/downloads/2012_10_24_KidsCountSpecialReport.pdf

Data Sources and Technical Notes:

Births to Teens (Ages 15-19), 2010-2014. The number of births to teenagers as reported by the N.J. Department of Health and Senior Services, Center for Health Statistics, New Jersey State Health Assessment Data.

Births to Teens as a Percentage of All Births, 2010-2014. As reported by the N.J. Department of Health and Senior Services, Center for Health Statistics, New Jersey State Health Assessment Data.

Teen Deaths (Ages 15-19), 2010-2014. The number of teenagers who died in that year, as reported by the N.J. Department of Health and Senior Services, Center for Health Statistics, New Jersey State Health Assessment Data.

Youth Ages 16-20 Diagnosed with a Sexually Transmitted Infection, by Gender, 2011-2015. Youth under age 21 diagnosed with chlamydia, gonorrhea or syphilis as reported by the N.J. Department of Health and Senior Services, Sexually Transmitted Disease Control Program. Does not include youth whose gender was unknown or unreported.

Juvenile Arrests, 2011-2015. Newark data reported by the Newark Police Department. Essex and New Jersey data reported by the N.J. Department of Law and Public Safety, Division of State Police, Uniform Crime Report. 2015 data for Essex and New Jersey were not yet available.

Newark Annual Admissions to Detention, 2011-2015. The number of juveniles admitted to detention. As reported by the New Jersey Juvenile Justice Commission.

Essex County Annual Admissions to Detention, 2011-2015. As reported by the New Jersey Juvenile Justice Commission.